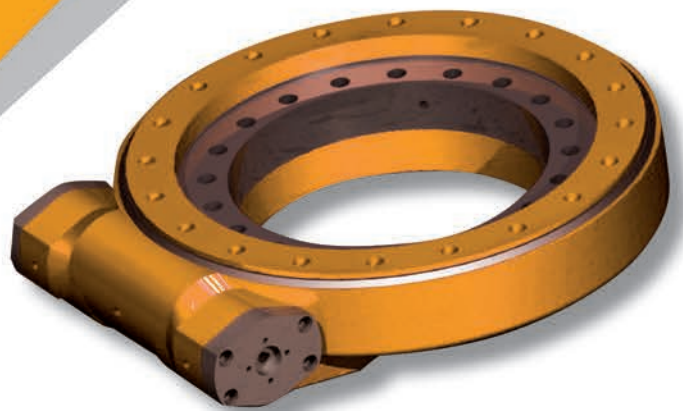


cetic

Couronnes
Roues tangentés
et Vis sans fin



13, rue René Laënnec
F. 78310 COIGNIERES
www.cetic.fr

Tél. : +33 (0)1 30 49 11 20
Fax : +33 (0)1 30 49 11 24
contact@cetic.fr

CODE DESCRIPTION :

Model Code	Gear	Worm Shaft	Hydraulic Motor
SE 14	85	B H	2 R - 2181 - A 160

Type product slewing drive

Away (oil port) — A or None
 Inside (oil port) — I
 Up (oil port) — U
 Down (oil port) — D

Hydraulic motor's displacement, cc/rev. (by design, such as "160") — 160

R — Hydraulic motor position, right side
 L — Hydraulic motor position, left side
 None — Shaft number, None meaning is only one worm
 2 — Dual worm drive

None — Shaft opposite to motor, capped end
 H — Worm hex extrusion
 E — Shaft opposite to motor, with encoder

None — Omitted with hydraulic motor
 B — SAE 6B spline
 12 — 12mm keyed shaft
 16 — 16mm keyed shaft
 25 — 25mm keyed shaft

85 — Reduction ratio

14 — Diameter of raceway in inch
 SE — Enclosed housing slewing drive
 S — Open housing slewing drive

EXPLICATIONS :

SE/PE:

- matière couronne 50Mn vis sans fin 42CrMo
- SE cartésiée,
- PE cartésiée avec précision

HSE:

- matière couronne 50 Mn vis 42CrMo
- travail intense

VE/PVE:

- couronnes avec platine de montage
- VE: standard
- PE: précision

WE:

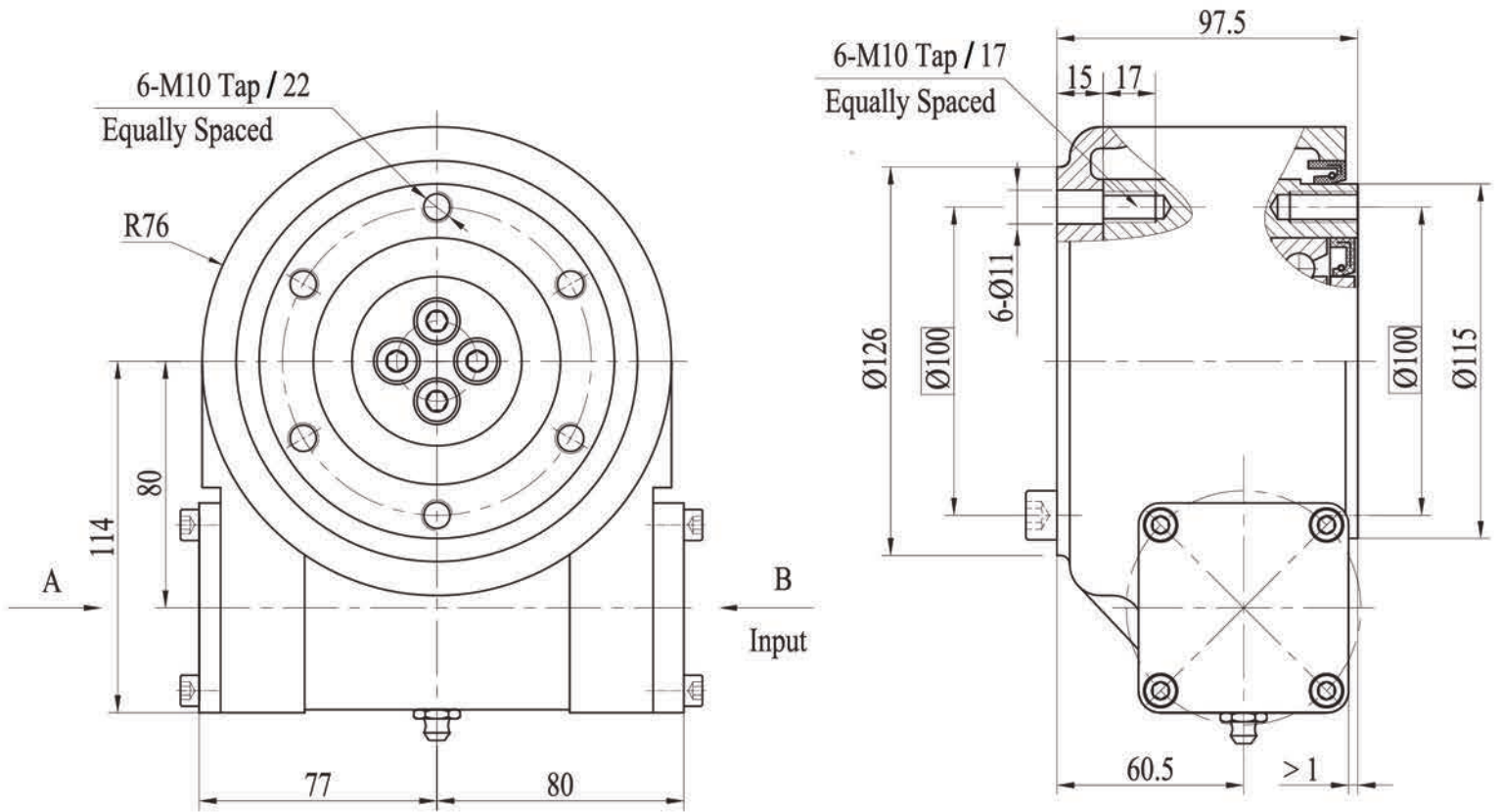
- matière couronne 42 CrMo vis 42 CrMo
- vis globique couple moteur plus élevé

SOMMAIRE

SE3C / PE3C - SLEWING DRIVE	4
SE5C / PE5C - SLEWING DRIVE	6
SE7A / PE7A - SLEWING DRIVE	8
SE9A / PE9A - SLEWING DRIVE	10
SE12A / PE12A - SLEWING DRIVE	12
SE14A / PE14A - SLEWING DRIVE	14
SE17A / PE17A - SLEWING DRIVE	16
SE21 / PE21 - SLEWING DRIVE	18
SE25 / PE25 - SLEWING DRIVE	20
HSE14 - SLEWING DRIVE	22
HSE21 - SLEWING DRIVE	24
HSE25 - SLEWING DRIVE	26
VE7E / PVE7E - SLEWING DRIVE	28
VE9A / PVE9A - SLEWING DRIVE	30
VE17 / PVE17 - SLEWING DRIVE	32
WEA7 - WORM DRIVE	34
WE9 - WORM DRIVE	36
WE12 - WORM DRIVE	38
WE14 - WORM DRIVE	40
WE17 - WORM DRIVE	42
WEA19B - WORM DRIVE	44
WE21 - WORM DRIVE	46
WE25 - WORM DRIVE	48

SE3C / PE3C - SLEWING DRIVE

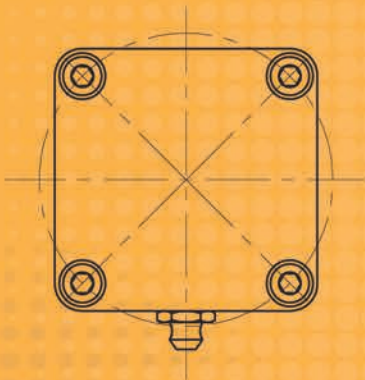
UNITS: mm



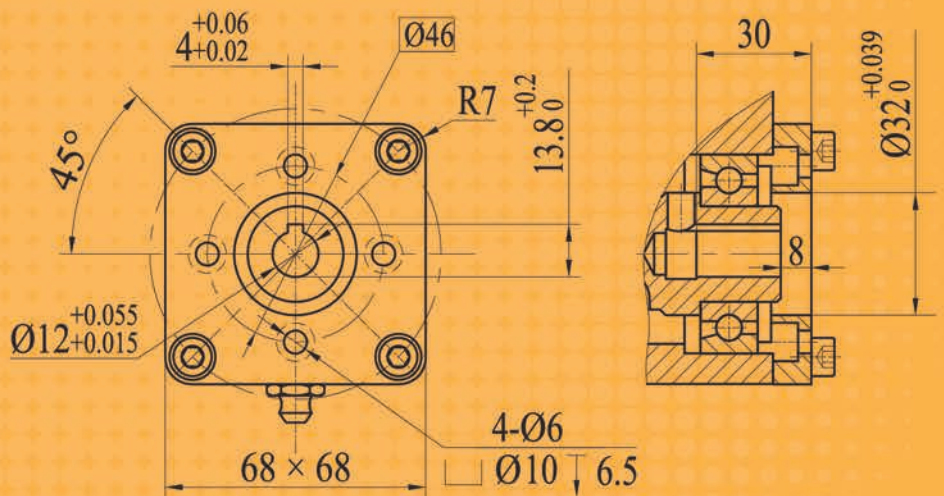
 **12kg**

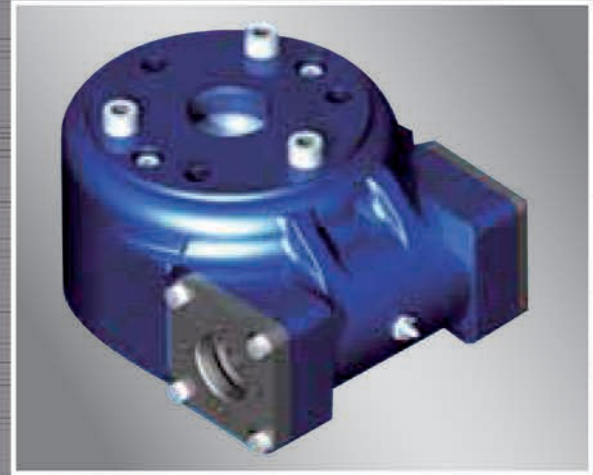
VIEW A

END CAP



VIEW B



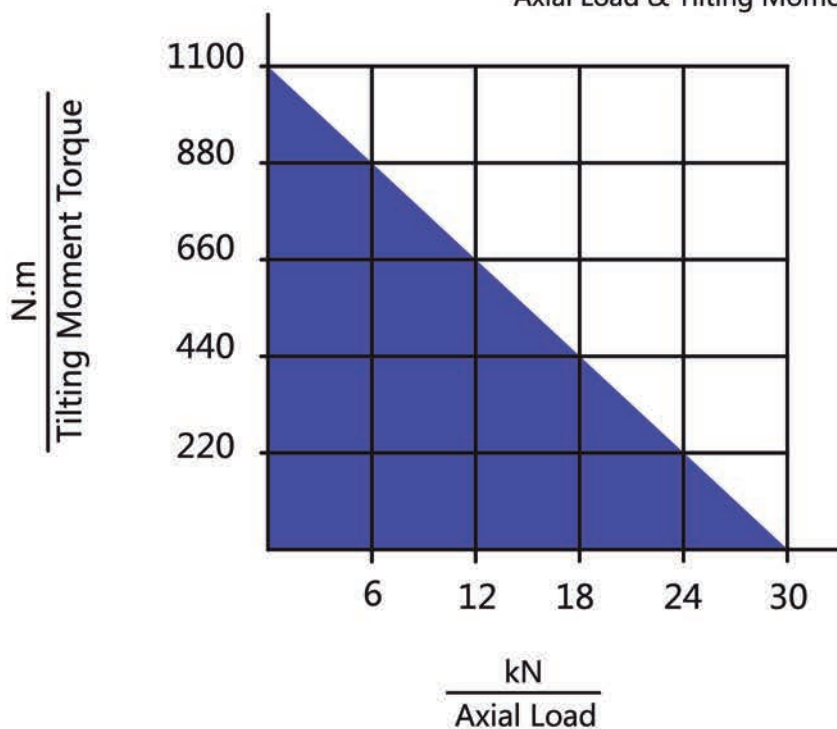


SE3C/PE3C | Slewing Drive Performance Parameters

Data Model	Output Torque	Tilting Moment Torque	Holding Torque	Static Axial Rating	Static Radial Rating	Dynamic Axial Rating	Dynamic Radial Rating	Gear Ratio	Tracking Precision	Weight
SE3C	400 N.m	1100 N.m	2000 N.m	30 kN	16.6 kN	9.6 kN	8.4 kN	62 : 1	$\leq 0.2^\circ$	12kg
PE3C	400 N.m	1100 N.m	2000 N.m	30 kN	16.6 kN	9.6 kN	8.4 kN	62 : 1	I : $\leq 0.08^\circ$ II : $\leq 0.12^\circ$ III : $\leq 0.15^\circ$	12kg

MOMENT LOAD CHART

Axial Load & Tilting Moment



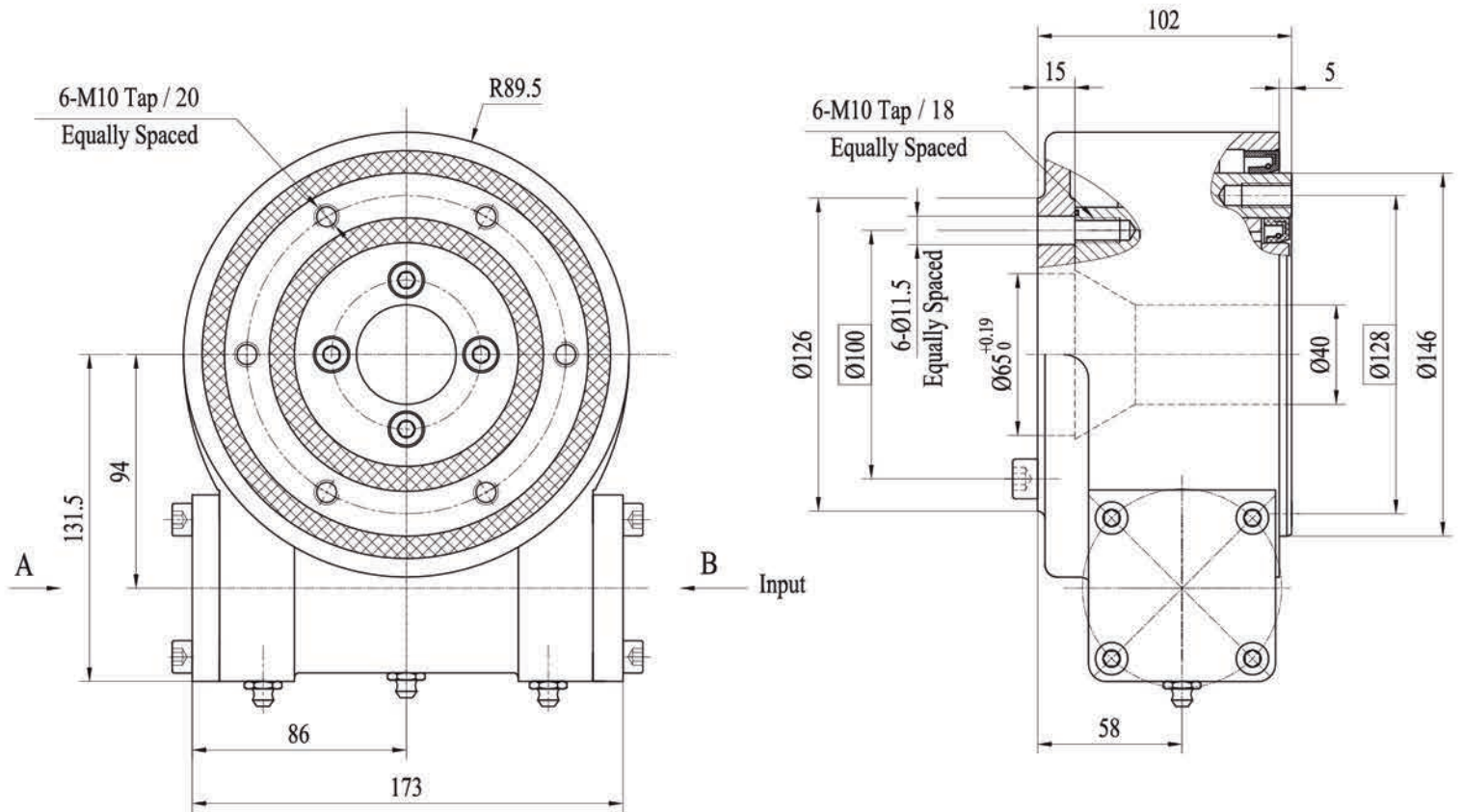
NOTE

- ▲ MAKE SURE YOU STAY BELOW THIS LINE
- ▲ THIS DRAWING IS JUST FOR YOUR REFERENCE
- ▲ THE DRAWING IS SUBJECT TO CHANGE DUE TO NEW DESIGN WITHOUT PRIOR NOTICE

For more information, please contact with us as follows

SE5C / PE5C - SLEWING DRIVE

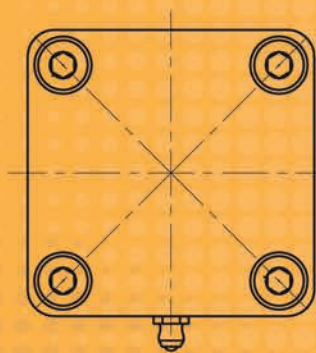
UNITS: mm



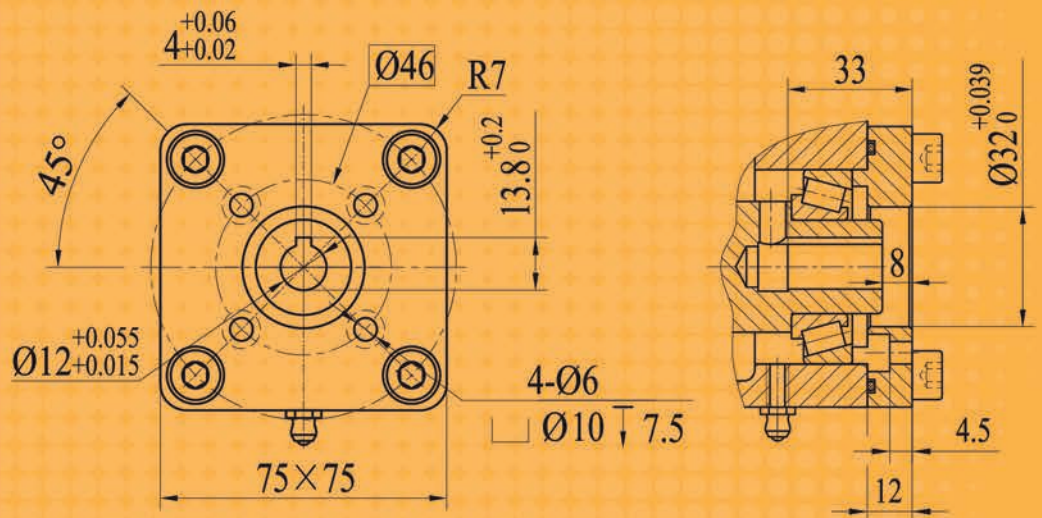
 **16kg**

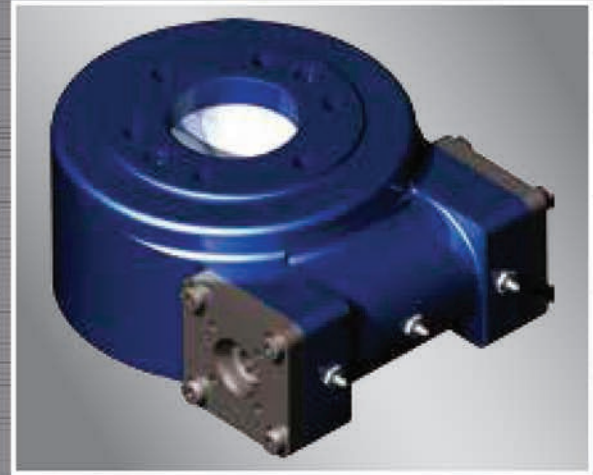
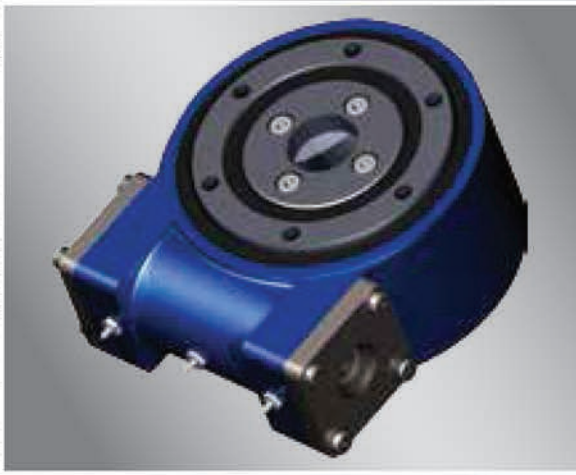
VIEW A

END CAP



VIEW B



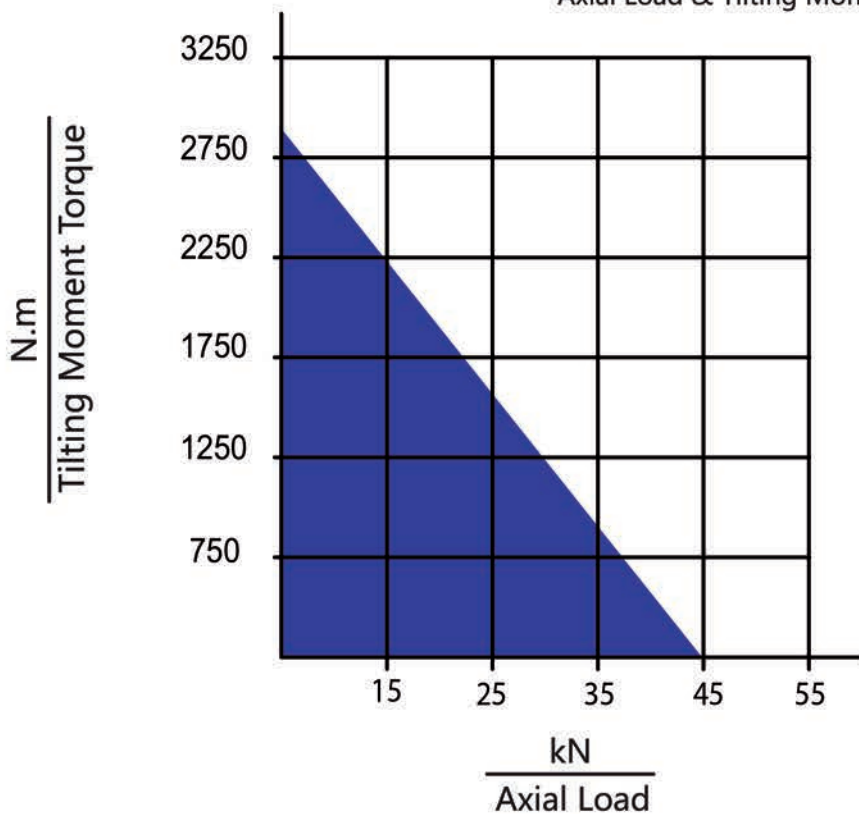


SE5C/PE5C | Slewing Drive Performance Parameters

Model \ Data	Output Torque	Tilting Moment Torque	Holding Torque	Static Axial Rating	Static Radial Rating	Dynamic Axial Rating	Dynamic Radial Rating	Gear Ratio	Tracking Precision	Weight
SE5C	600 N.m	2800 N.m	5000 N.m	45 kN	22 kN	14.4 kN	11.1 kN	62 : 1	$\leq 0.2^\circ$	20kg
PE5C	600 N.m	2800 N.m	5000 N.m	45 kN	22 kN	14.4 kN	11.1 kN	62 : 1	I : $\leq 0.05^\circ$ II : $\leq 0.08^\circ$ III : $\leq 0.12^\circ$	20kg

MOMENT LOAD CHART

Axial Load & Tilting Moment



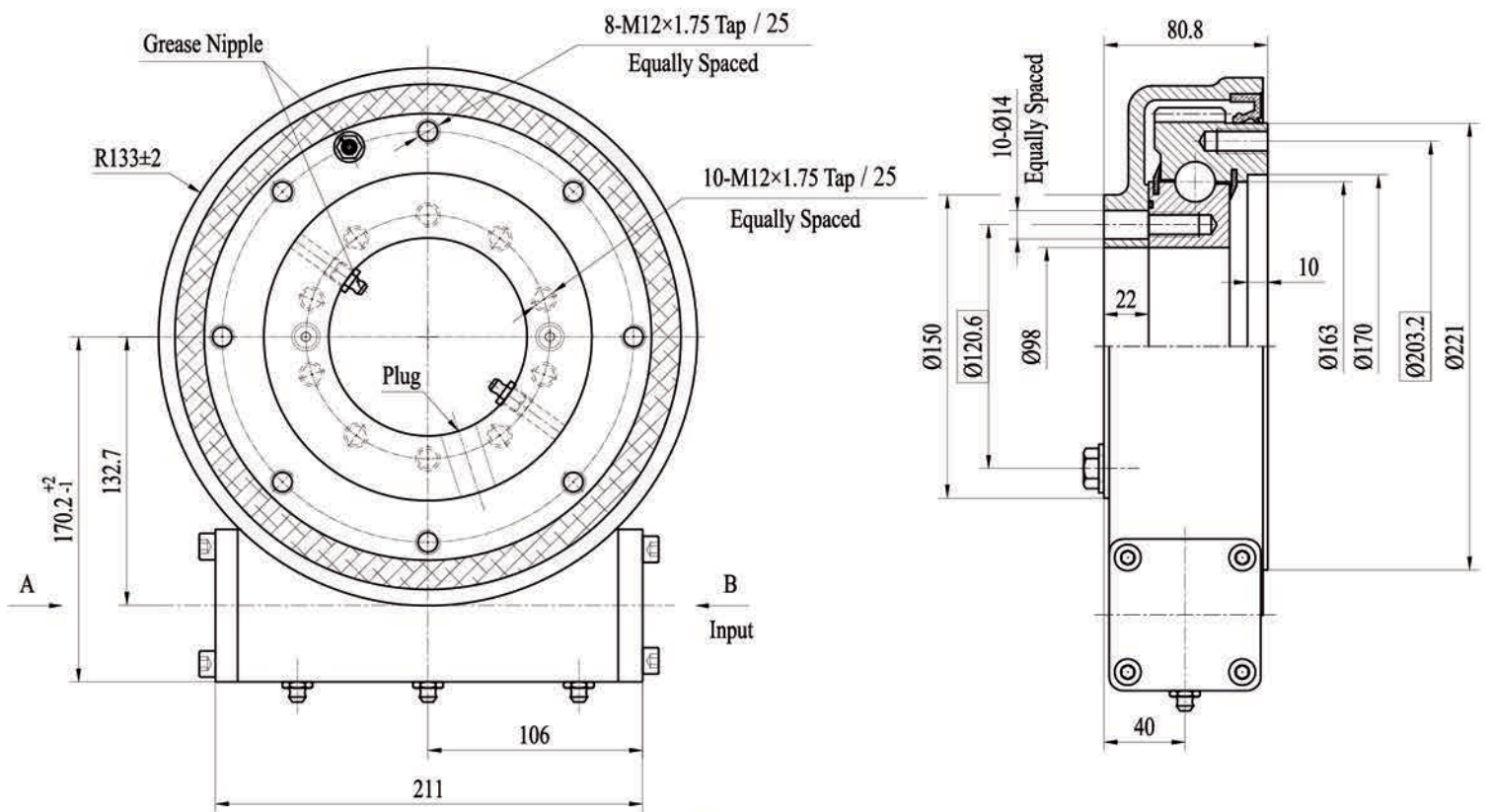
NOTE

- ▲ PLEASE BE SURE TO REMAIN UNDER THIS CURVE
- ▲ THIS DRAWING IS JUST FOR YOUR REFERENCE
- ▲ THE DRAWING IS SUBJECT TO CHANGE DUE TO NEW DESIGN WITHOUT PRIOR NOTICE

For more information, please contact with us as follows

SE7A / PE7A - SLEWING DRIVE

UNITS: mm

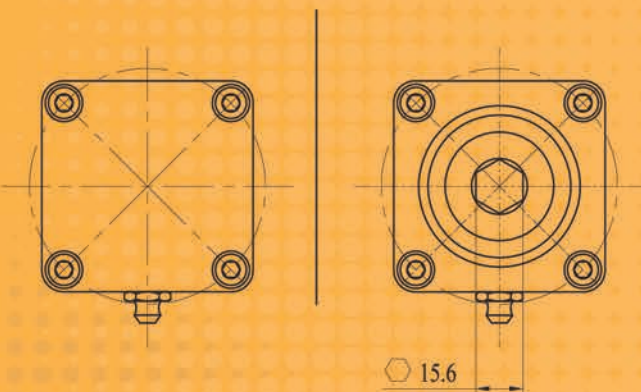


 **25kg**

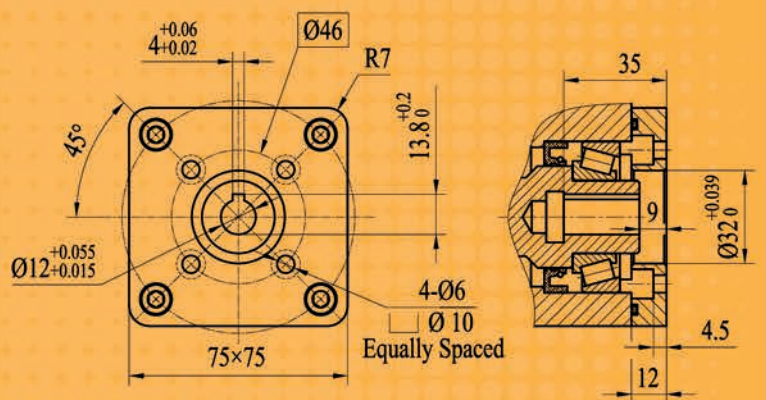
VIEW A OPTION

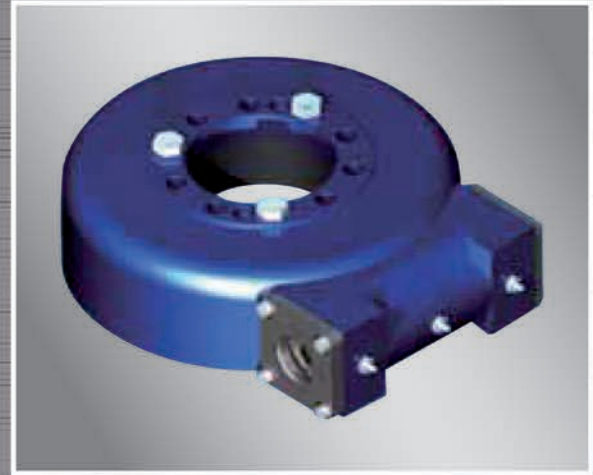
END CAP

WITH HEX



VIEW B



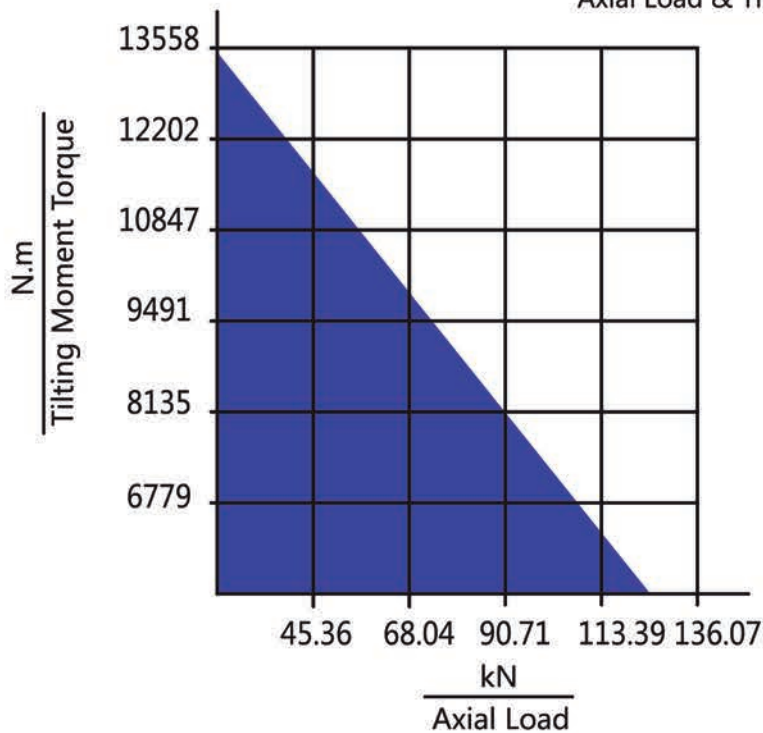


SE7A/PE7A | Slewing Drive Performance Parameters

Model	Data	Output Torque	Tilting Moment Torque	Holding Torque	Static Axial Rating	Static Radial Rating	Dynamic Axial Rating	Dynamic Radial Rating	Gear Ratio	Tracking Precision	Weight
SE7A		1500 N.m	13500 N.m	10400 N.m	133 kN	53 kN	32 kN	28 kN	73 : 1	$\leq 0.2^\circ$	21kg
PE7A		1500 N.m	13500 N.m	10400 N.m	133 kN	53 kN	32 kN	28 kN	73 : 1	I : $\leq 0.05^\circ$ II : $\leq 0.07^\circ$ III : $\leq 0.11^\circ$	21kg

MOMENT LOAD CHART

Axial Load & Tilting Moment



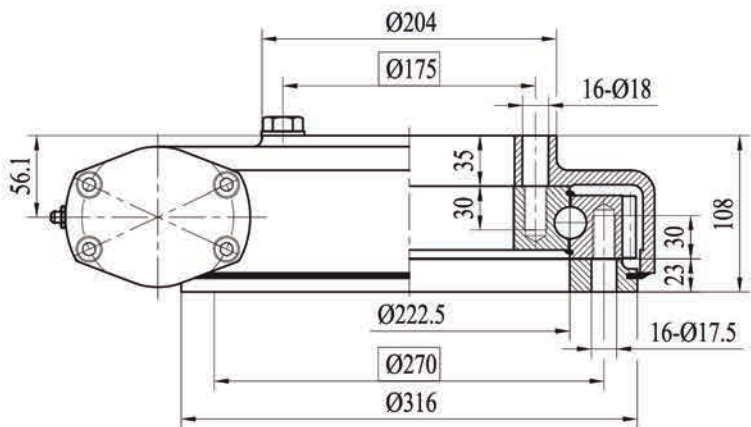
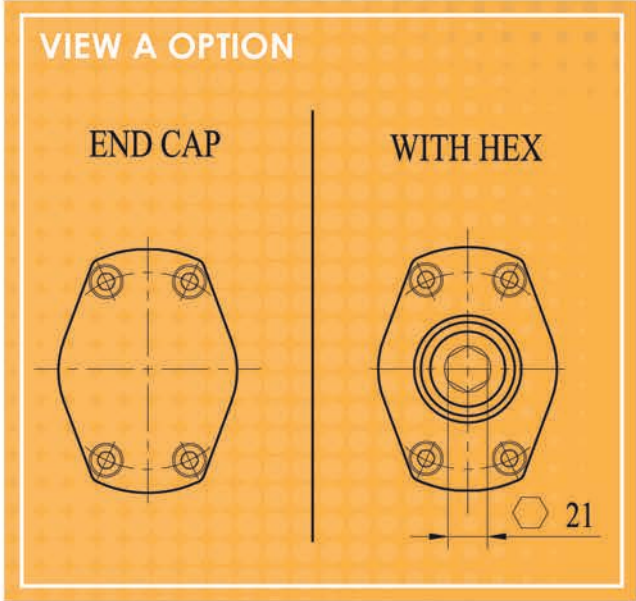
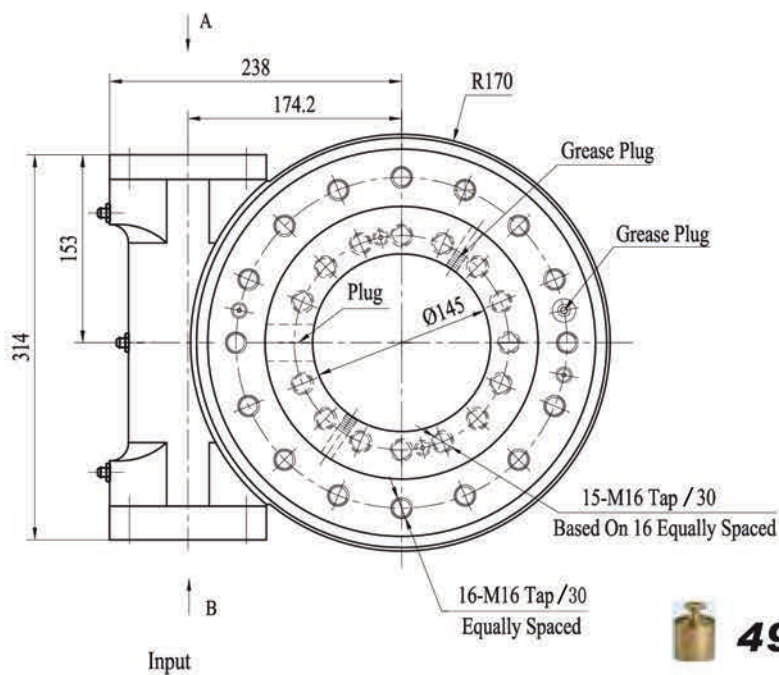
NOTE

- ▲ MAKE SURE YOU STAY BELOW THIS LINE
- ▲ THIS DRAWING IS JUST FOR YOUR REFERENCE
- ▲ THE DRAWING IS SUBJECT TO CHANGE DUE TO NEW DESIGN WITHOUT PRIOR NOTICE

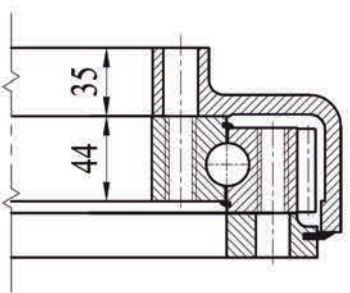
For more information, please contact with us as follows

SE9A / PE9A - SLEWING DRIVE

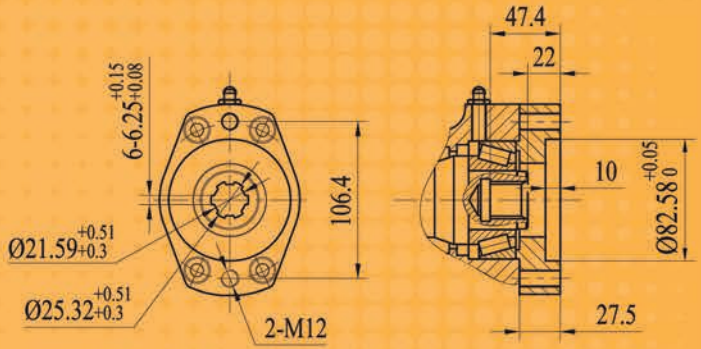
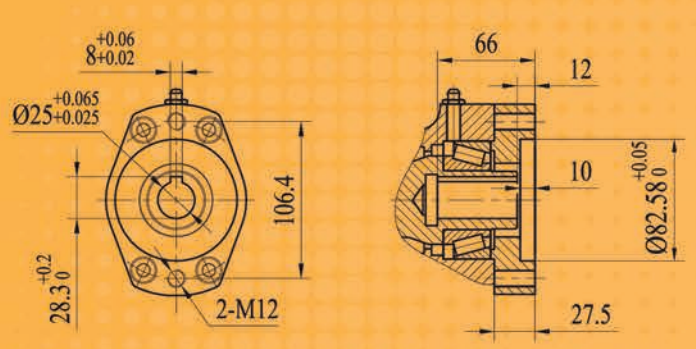
UNITS: mm



THRU HOLE OPTION



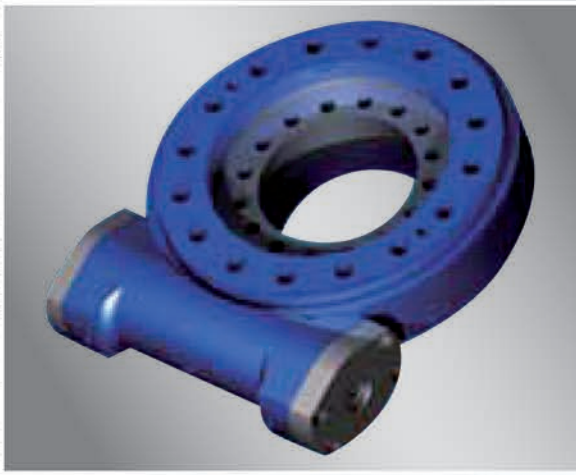
VIEW B OPTION



Ø12 Ø14 Ø16 Ø20 **Ø25**

6B SPLINE

■ NORMAL

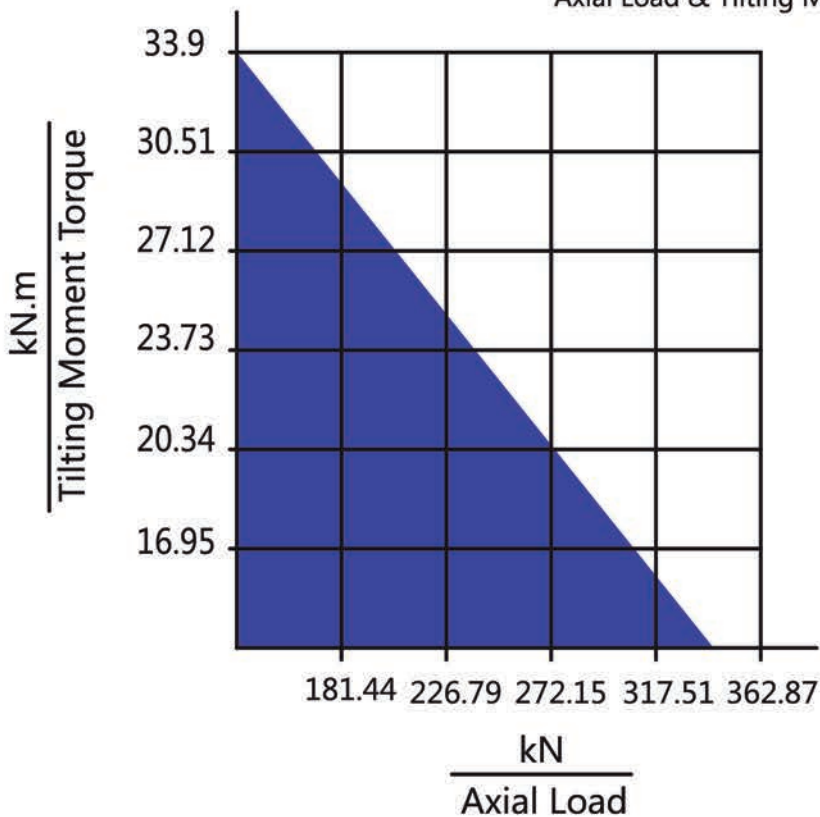


SE9A/PE9A | Slewing Drive Performance Parameters

Data Model	Output Torque	Tilting Moment Torque	Holding Torque	Static Axial Rating	Static Radial Rating	Dynamic Axial Rating	Dynamic Radial Rating	Gear Ratio	Tracking Precision	Weight
SE9A	6.5 kN.m	33.9 kN.m	38.7 kN.m	338 kN	135 kN	81 kN	71 kN	61 : 1	$\leq 0.17^\circ$	49kg
PE9A	6.5 kN.m	33.9 kN.m	38.7 kN.m	338 kN.m	135 kN	81 kN	71 kN	61 : 1	I : $\leq 0.05^\circ$ II : $\leq 0.07^\circ$ III : $\leq 0.09^\circ$	49kg

MOMENT LOAD CHART

Axial Load & Tilting Moment



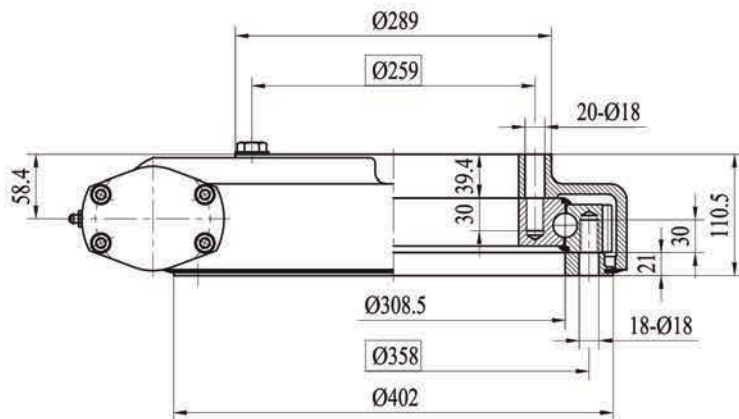
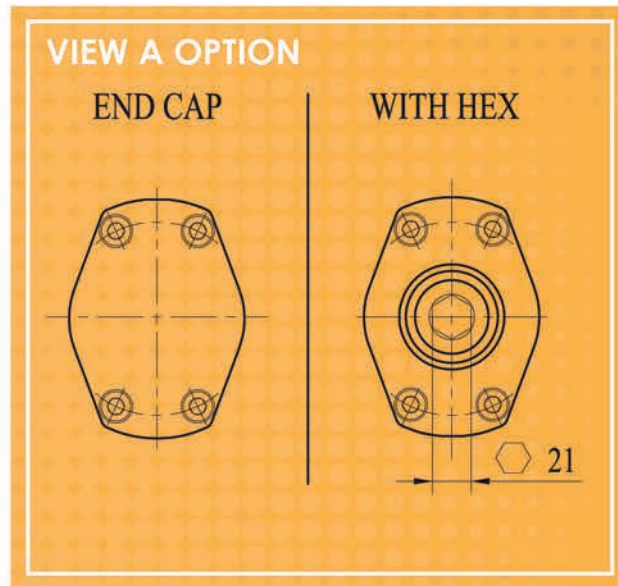
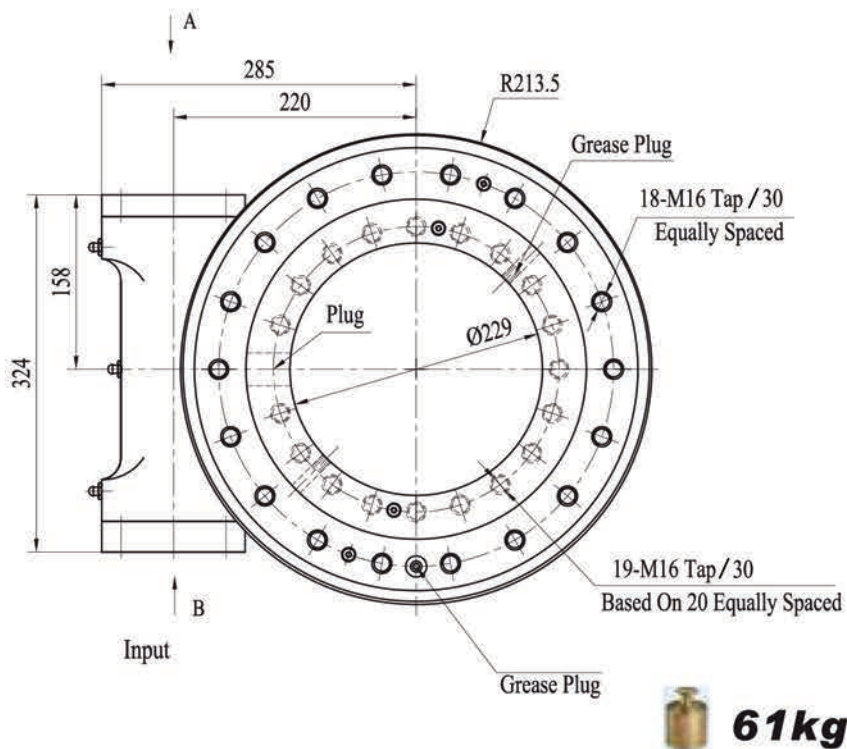
NOTE

- ▲ MAKE SURE YOU STAY BELOW THIS LINE
- ▲ THIS DRAWING IS JUST FOR YOUR REFERENCE
- ▲ THE DRAWING IS SUBJECT TO CHANGE DUE TO NEW DESIGN WITHOUT PRIOR NOTICE

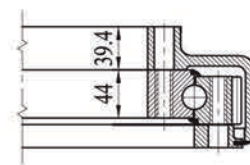
For more information, please contact with us as follows

SE12A / PE12A - SLEWING DRIVE

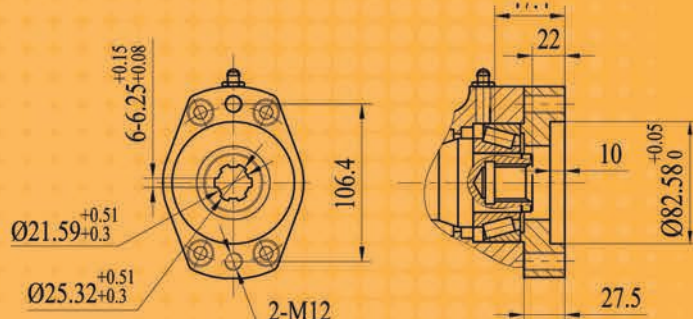
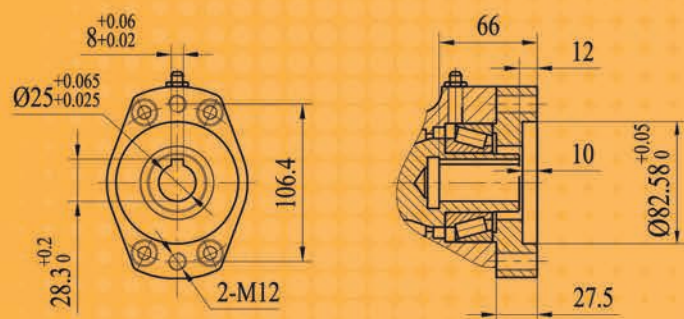
UNITS: mm



THRU HOLE OPTION



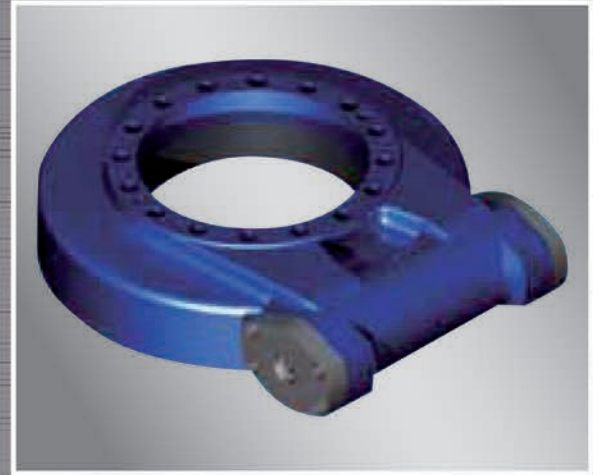
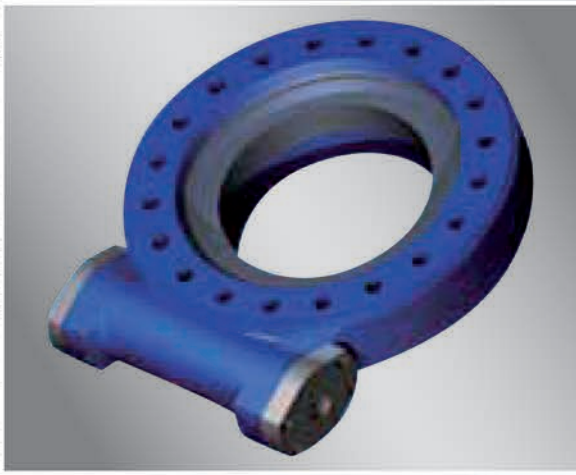
VIEW B OPTION



Ø12 Ø14 Ø16 Ø20 **Ø25**

■ NORMAL

6B SPLINE

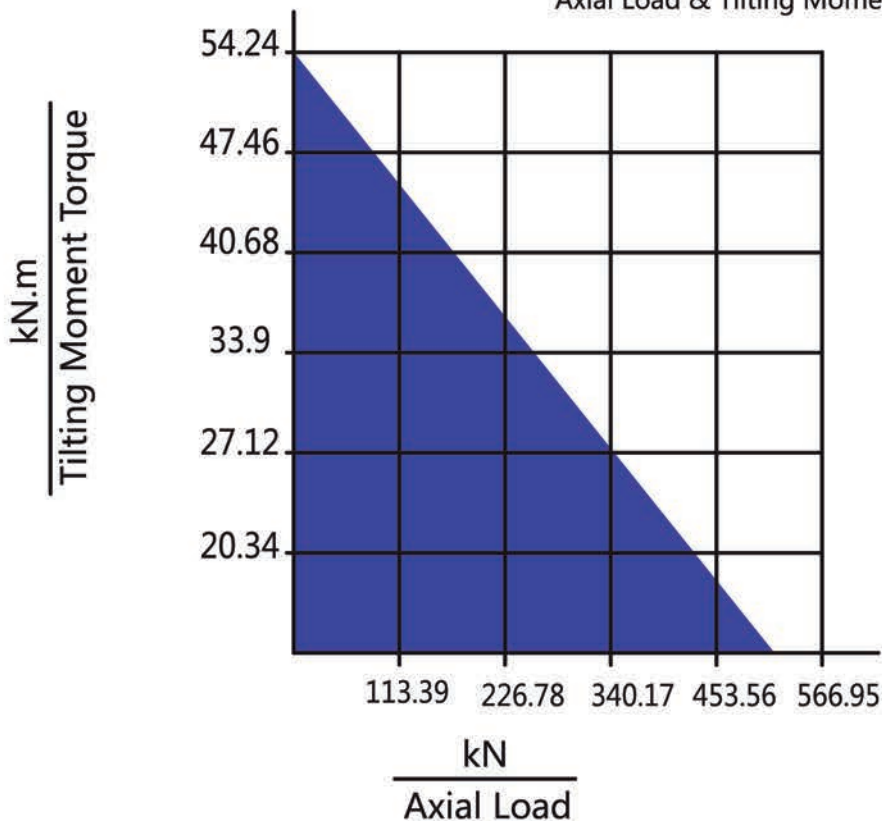


SE12A/PE12A | Slewing Drive Performance Parameters

Model \ Data	Output Torque	Tilting Moment Torque	Holding Torque	Static Axial Rating	Static Radial Rating	Dynamic Axial Rating	Dynamic Radial Rating	Gear Ratio	Tracking Precision	Weight
SE12A	7.5 kN.m	54.3 kN.m	43 kN.m	475 kN	190 kN	114 kN	100 kN	78 : 1	$\leq 0.17^\circ$	61kg
PE12A	7.5 kN.m	54.3 kN.m	43 kN.m	475 kN	190 kN	114 kN	100 kN	78 : 1	I : $\leq 0.03^\circ$ II : $\leq 0.05^\circ$ III : $\leq 0.07^\circ$	61kg

MOMENT LOAD CHART

Axial Load & Tilting Moment



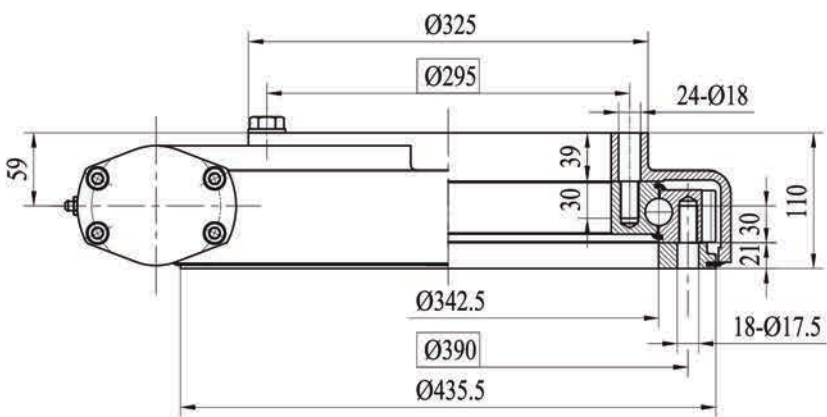
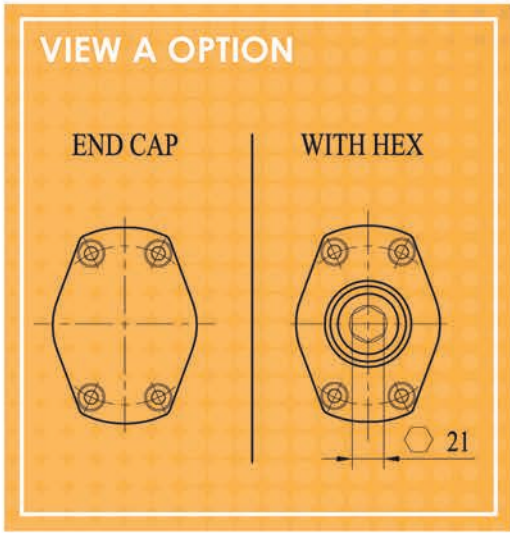
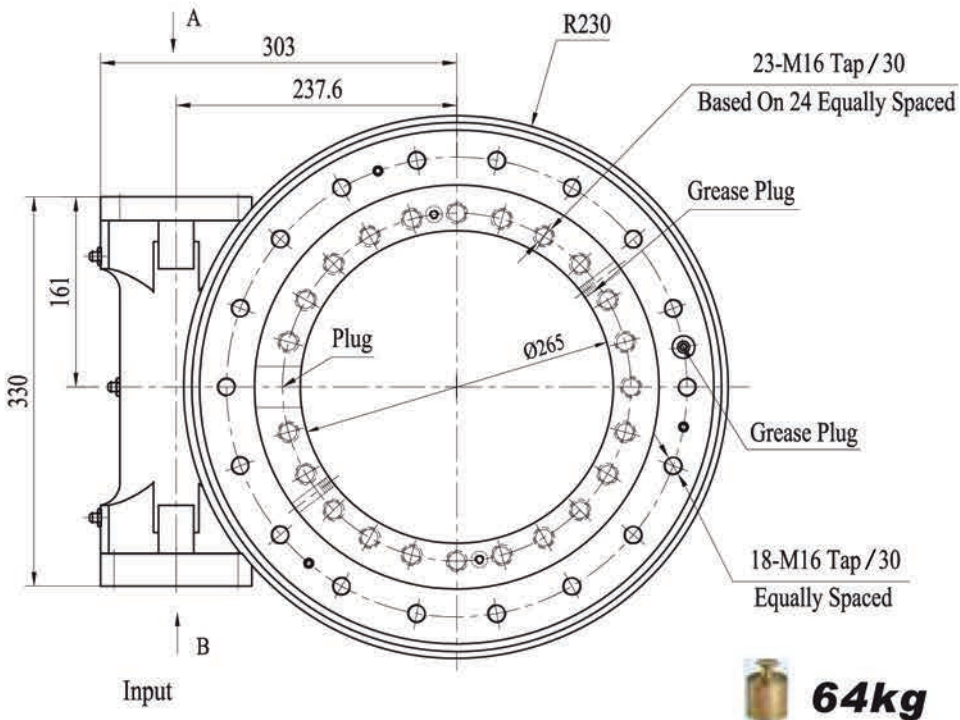
NOTE

- ▲ MAKE SURE YOU STAY BELOW THIS LINE
- ▲ THIS DRAWING IS JUST FOR YOUR REFERENCE
- ▲ THE DRAWING IS SUBJECT TO CHANGE DUE TO NEW DESIGN WITHOUT PRIOR NOTICE

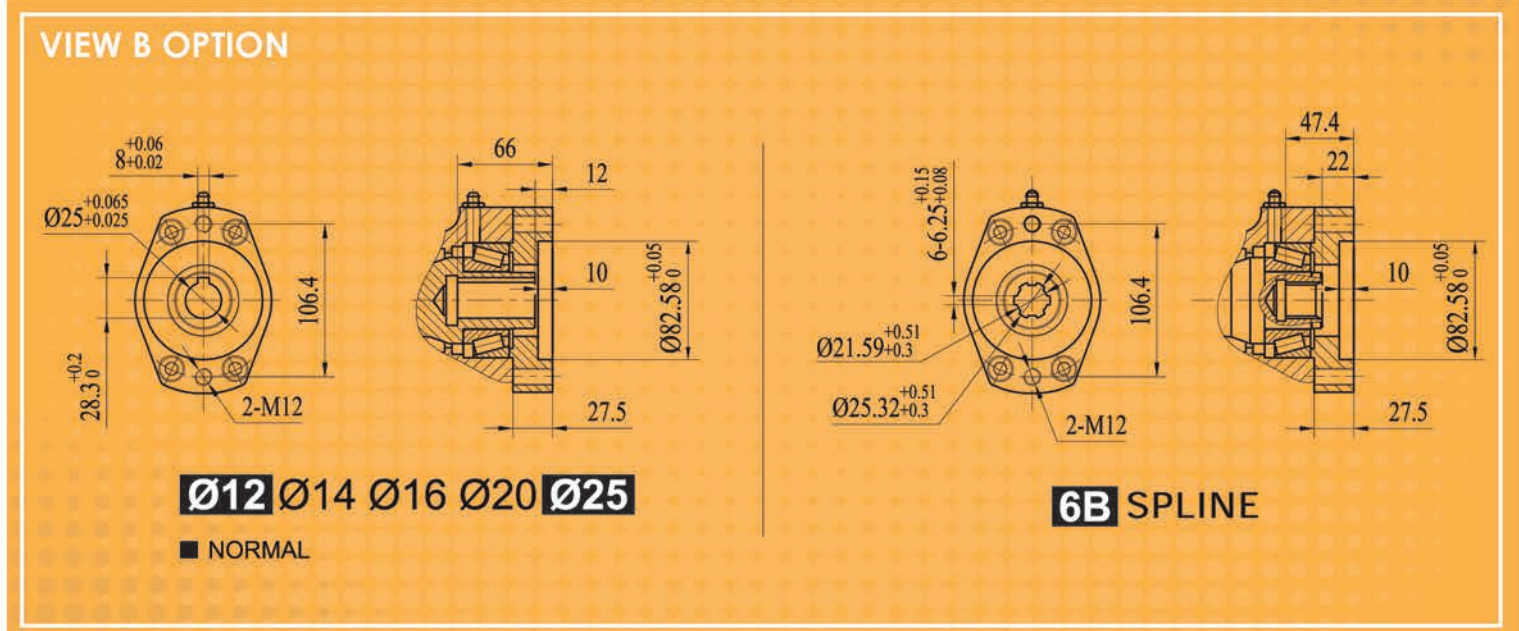
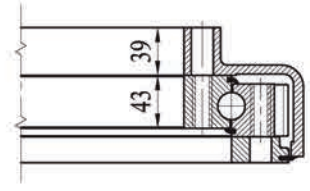
For more information, please contact with us as follows

SE14A / PE14A - SLEWING DRIVE

UNITS: mm



THRU HOLE OPTION



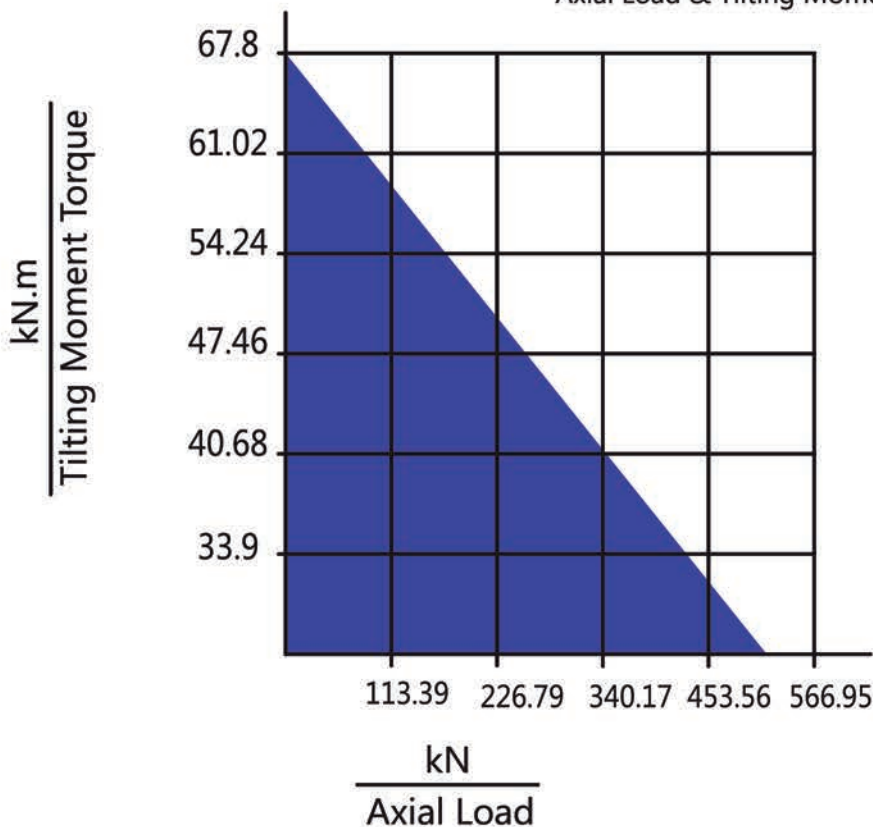


SE14A/PE14A | Slewing Drive Performance Parameters

Data Model	Output Torque	Tilting Moment Torque	Holding Torque	Static Axial Rating	Static Radial Rating	Dynamic Axial Rating	Dynamic Radial Rating	Gear Ratio	Tracking Precision	Weight
SE14A	8 kN.m	67.8 kN.m	48 kN.m	555 kN	222 kN	133 kN	117 kN	85 : 1	$\leq 0.17^\circ$	64kg
PE14A	8 kN.m	67.8 kN.m	48 kN.m	555 kN	222 kN	133 kN	117 kN	85 : 1	I : $\leq 0.03^\circ$ II : $\leq 0.05^\circ$ III : $\leq 0.07^\circ$ IV : $\leq 0.09^\circ$	64kg

MOMENT LOAD CHART

Axial Load & Tilting Moment



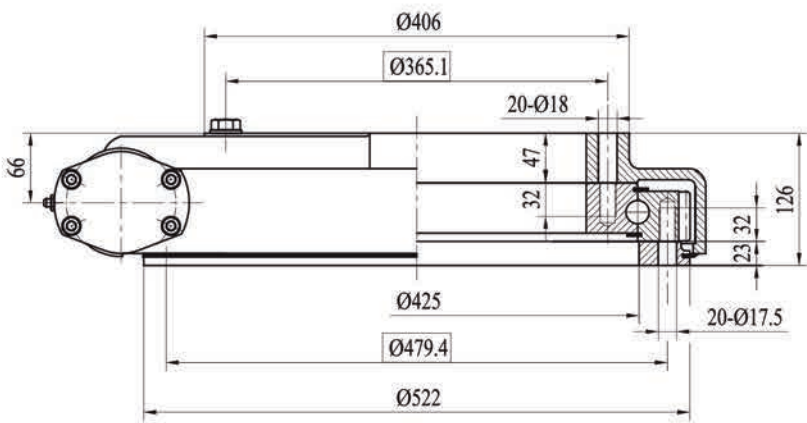
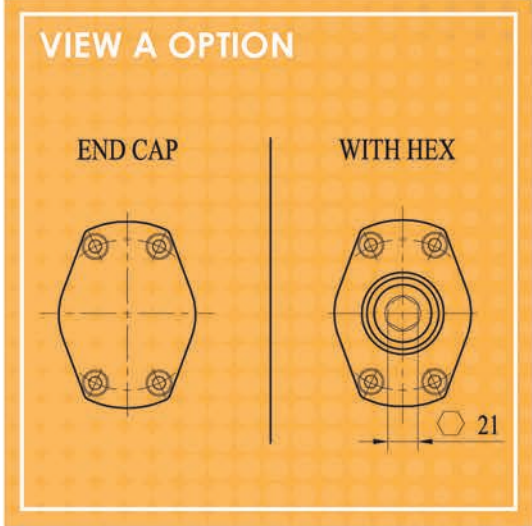
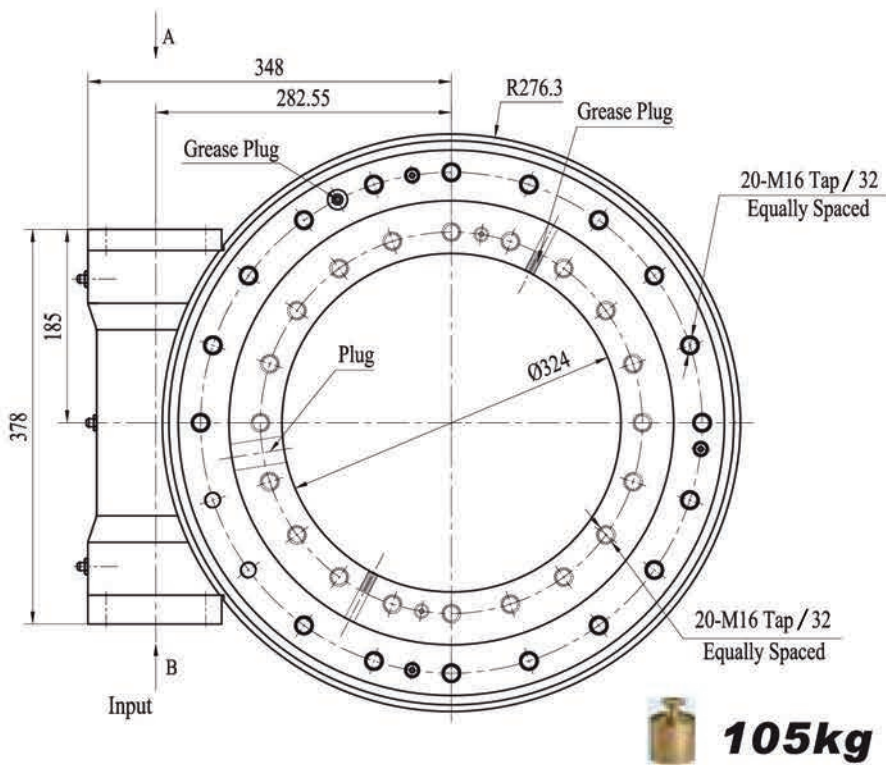
NOTE

- ▲ MAKE SURE YOU STAY BELOW THIS LINE
- ▲ THIS DRAWING IS JUST FOR YOUR REFERENCE
- ▲ THE DRAWING IS SUBJECT TO CHANGE DUE TO NEW DESIGN WITHOUT PRIOR NOTICE

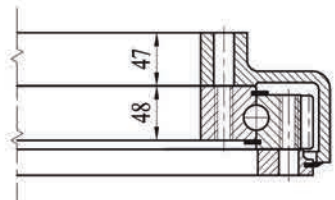
For more information, please contact with us as follows

SE17A / PE17A - SLEWING DRIVE

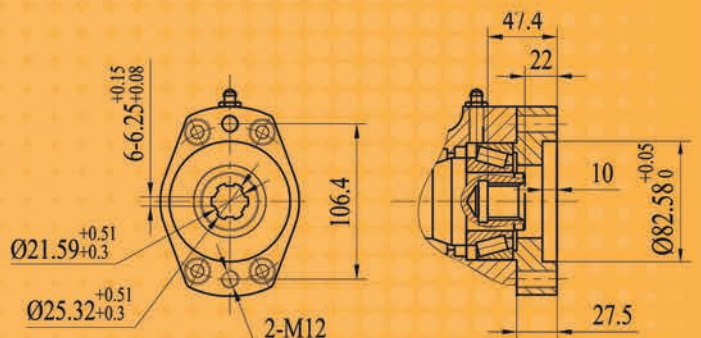
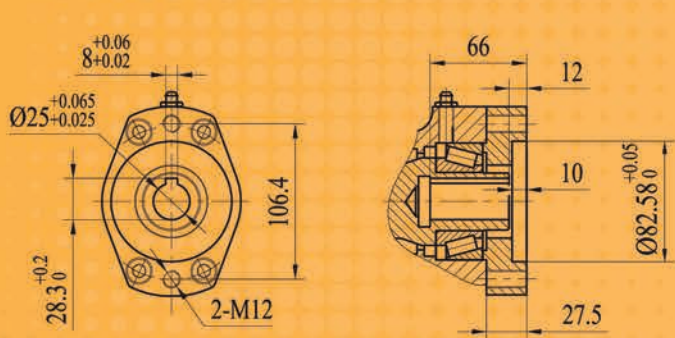
UNITS: mm



THRU HOLE OPTION



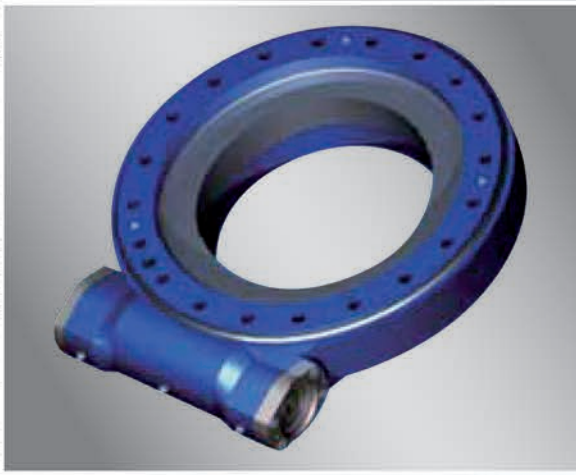
VIEW B OPTION



Ø12 Ø14 Ø16 Ø20 Ø25

■ NORMAL

6B SPLINE

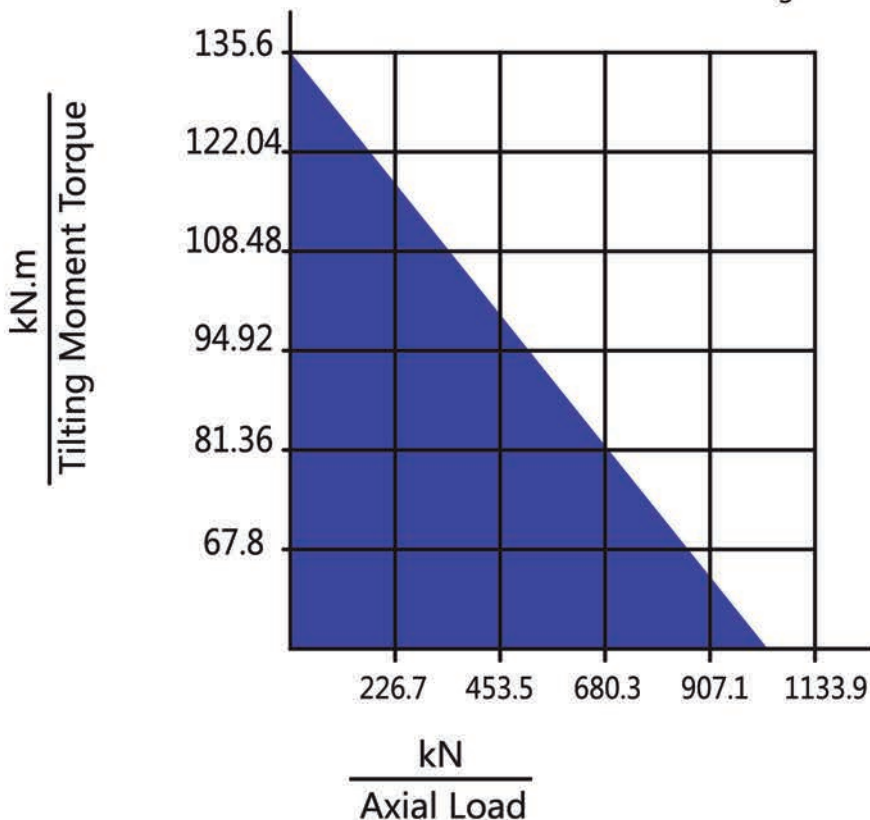


SE17A/PE17A | Slewing Drive Performance Parameters

Data Model	Output Torque	Tilting Moment Torque	Holding Torque	Static Axial Rating	Static Radial Rating	Dynamic Axial Rating	Dynamic Radial Rating	Gear Ratio	Tracking Precision	Weight
SE17A	10 kN.m	135.6 kN.m	72.3 kN.m	970 kN	390 kN	235 kN	205 kN	102 : 1	$\leq 0.15^\circ$	105kg
PE17A	10 kN.m	135.6 kN.m	72.3 kN.m	970 kN	390 kN	235 kN	205 kN	102 : 1	I : $\leq 0.03^\circ$ II : $\leq 0.05^\circ$ III : $\leq 0.07^\circ$ IV : $\leq 0.09^\circ$	105kg

MOMENT LOAD CHART

Axial Load & Tilting Moment



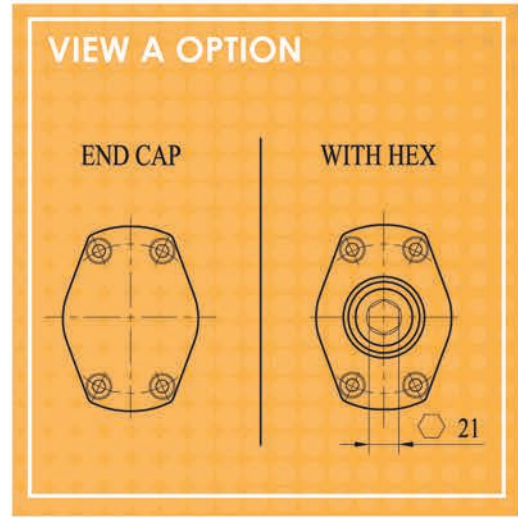
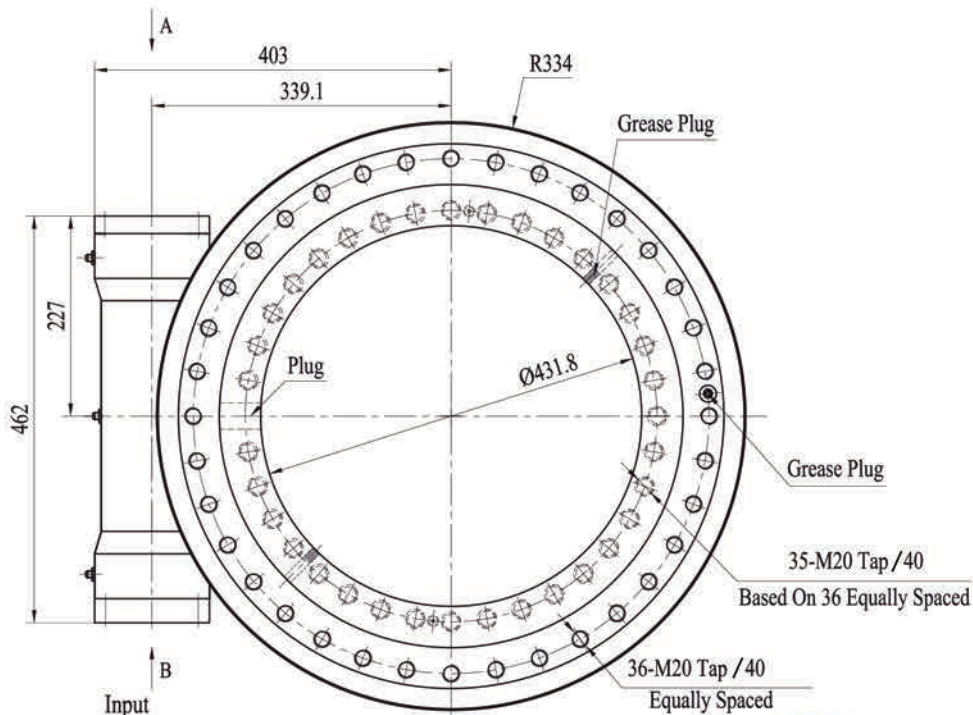
NOTE

- ▲ MAKE SURE YOU STAY BELOW THIS LINE
- ▲ THIS DRAWING IS JUST FOR YOUR REFERENCE
- ▲ THE DRAWING IS SUBJECT TO CHANGE DUE TO NEW DESIGN WITHOUT PRIOR NOTICE

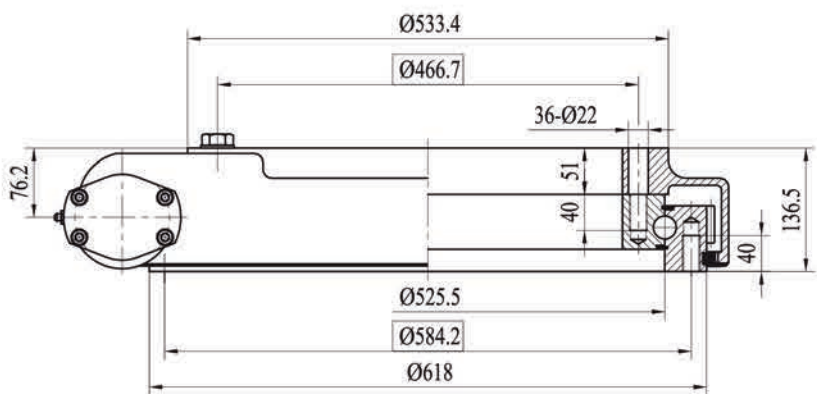
For more information, please contact with us as follows

SE21 / PE21 - SLEWING DRIVE

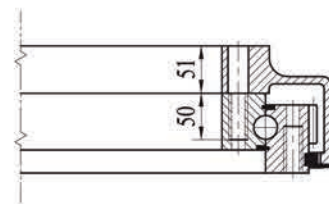
UNITS: mm



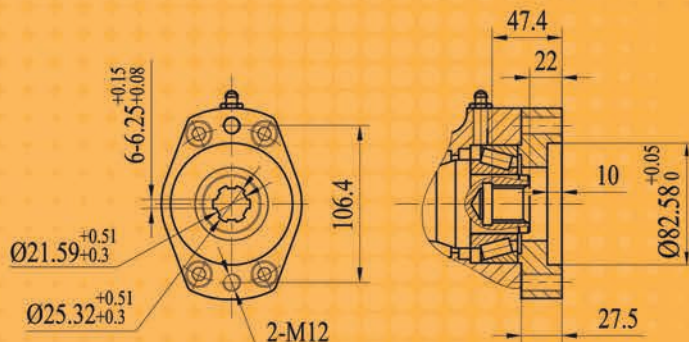
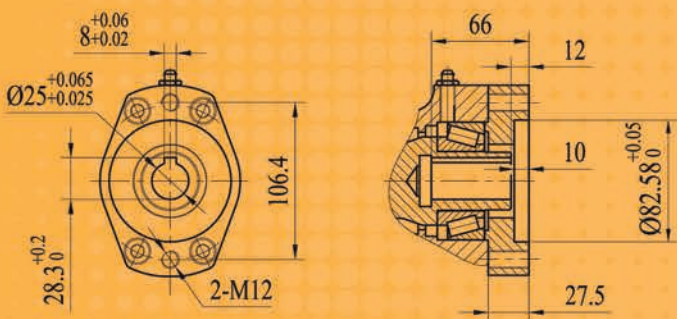
 **149kg**



THRU HOLE OPTION



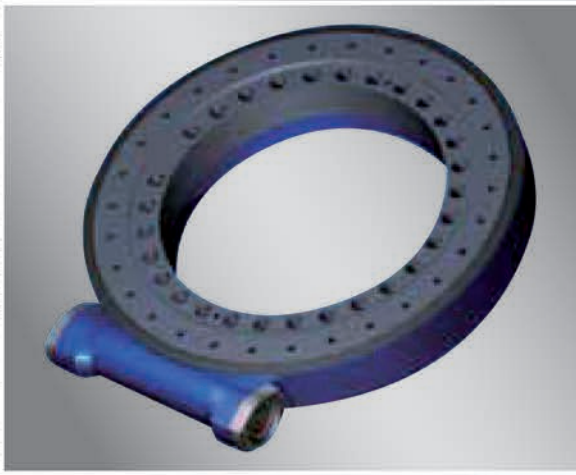
VIEW B OPTION



Ø12 Ø14 Ø16 Ø20 Ø25

■ NORMAL

6B SPLINE

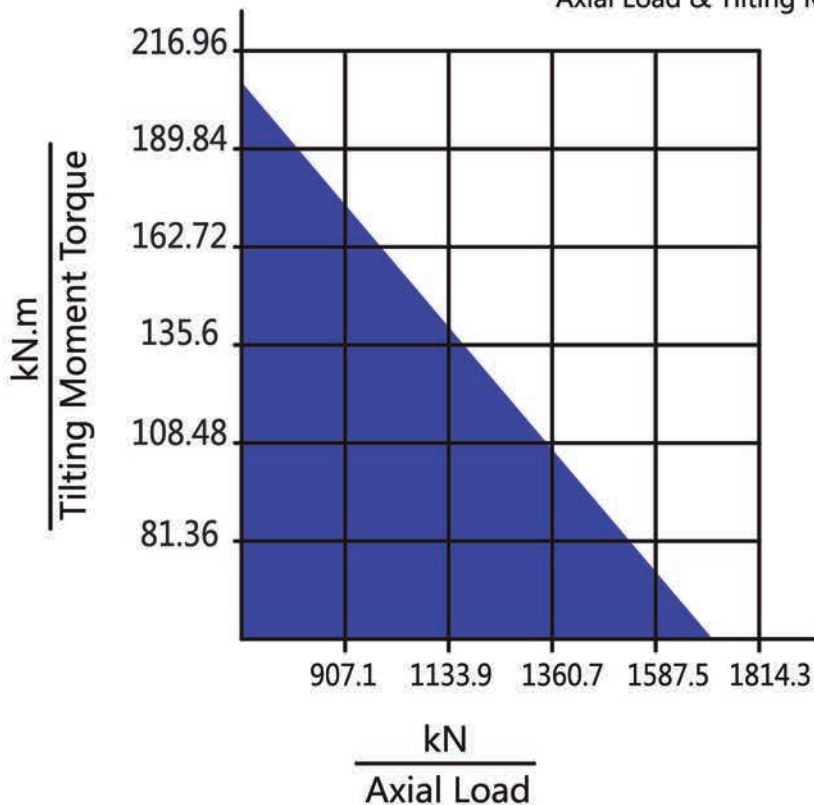


SE21/PE21 | Slewing Drive Performance Parameters

Data Model	Output Torque	Tilting Moment Torque	Holding Torque	Static Axial Rating	Static Radial Rating	Dynamic Axial Rating	Dynamic Radial Rating	Gear Ratio	Tracking Precision	Weight
SE21	15 kN.m	203 kN.m	105.8 kN.m	1598 kN	640 kN	385 kN	335 kN	125 : 1	$\leq 0.15^\circ$	149kg
PE21	15 kN.m	203 kN.m	105.8 kN.m	1598 kN	640 kN	385 kN	335 kN	125 : 1	I : $\leq 0.03^\circ$ II : $\leq 0.05^\circ$ III : $\leq 0.07^\circ$ IV : $\leq 0.09^\circ$	149kg

MOMENT LOAD CHART

Axial Load & Tilting Moment



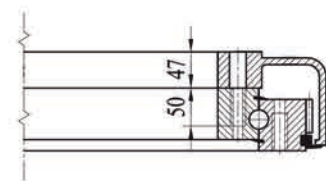
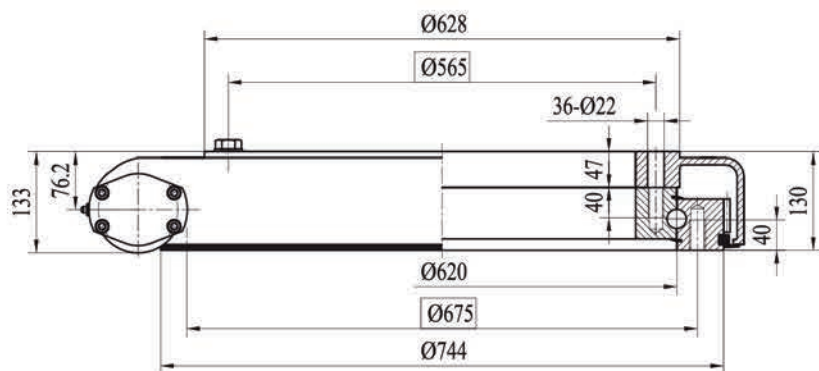
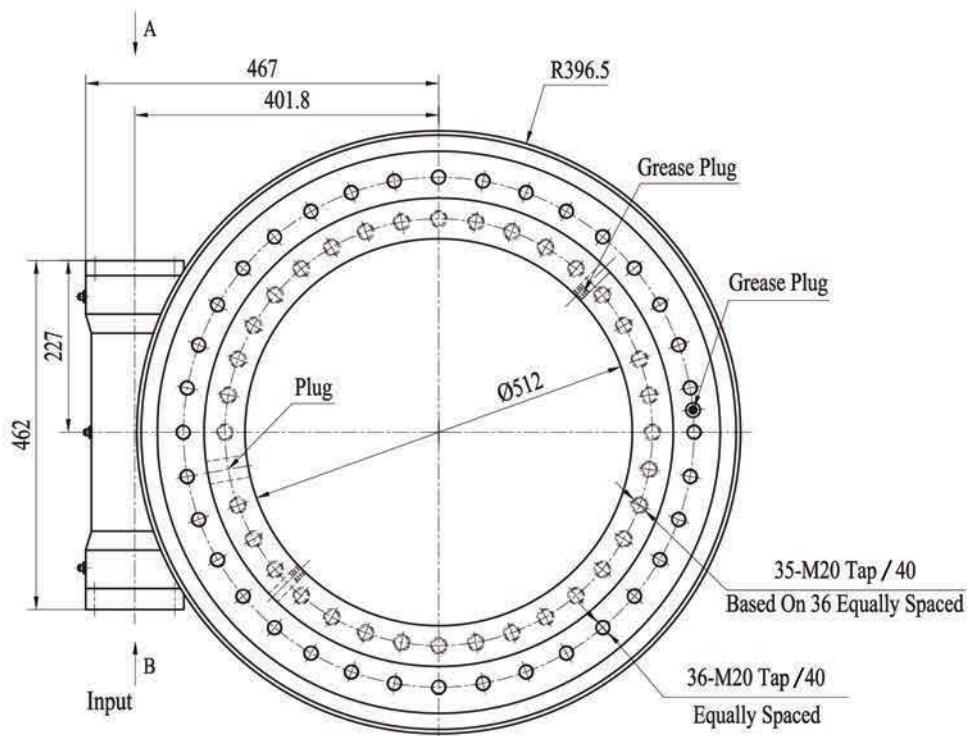
NOTE

- ▲ MAKE SURE YOU STAY BELOW THIS LINE
- ▲ THIS DRAWING IS JUST FOR YOUR REFERENCE
- ▲ THE DRAWING IS SUBJECT TO CHANGE DUE TO NEW DESIGN WITHOUT PRIOR NOTICE

For more information, please contact with us as follows

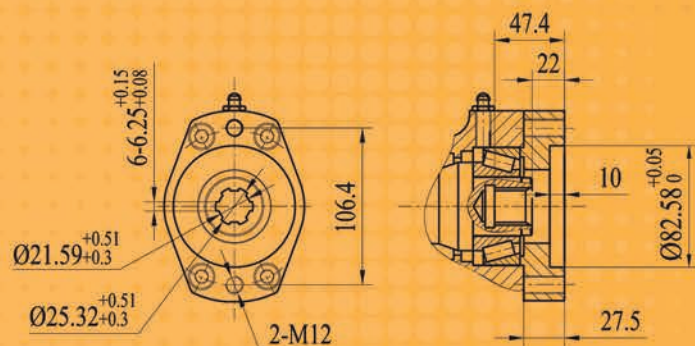
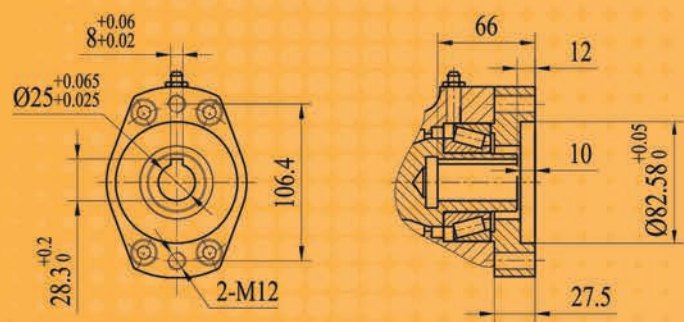
SE25 / PE25 - SLEWING DRIVE

UNITS: mm



 **204kg**

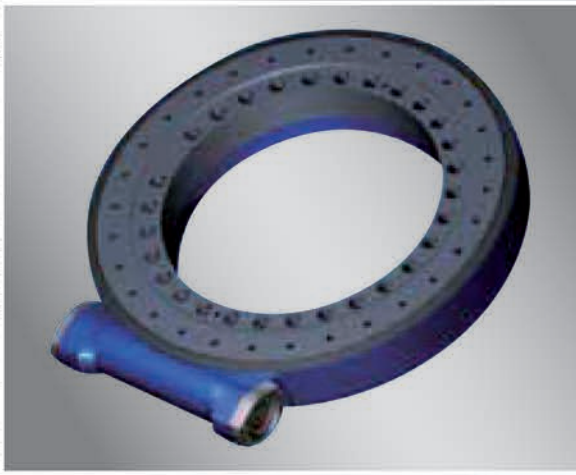
VIEW B OPTION



Ø12 Ø14 Ø16 Ø20 Ø25

6B SPLINE

■ NORMAL

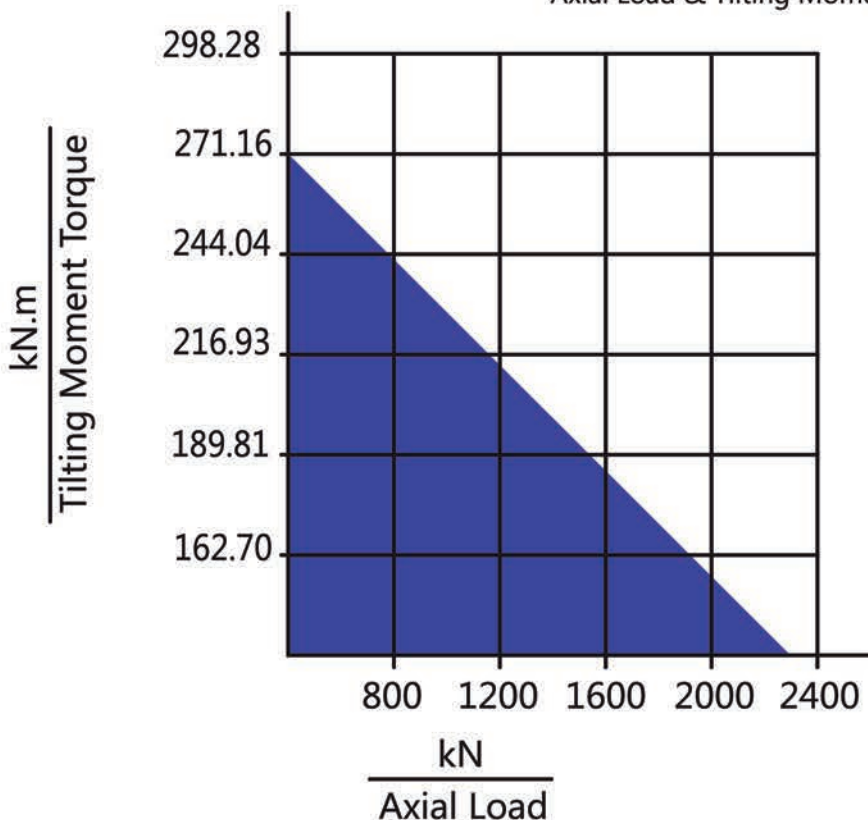


SE25/PE25 | Slewing Drive Performance Parameters

Data Model	Output Torque	Tilting Moment Torque	Holding Torque	Static Axial Rating	Static Radial Rating	Dynamic Axial Rating	Dynamic Radial Rating	Gear Ratio	Tracking Precision	Weight
SE25	18 kN.m	271 kN.m	158.3 kN.m	2360 kN	945 kN	590 kN	470 kN	150 : 1	$\leq 0.15^\circ$	204kg
PE25	18 kN.m	271 kN.m	158.3 kN.m	2360 kN	945 kN	590 kN	470 kN	150 : 1	I : $\leq 0.03^\circ$ II : $\leq 0.05^\circ$ III : $\leq 0.07^\circ$ IV : $\leq 0.09^\circ$	204kg

MOMENT LOAD CHART

Axial Load & Tilting Moment



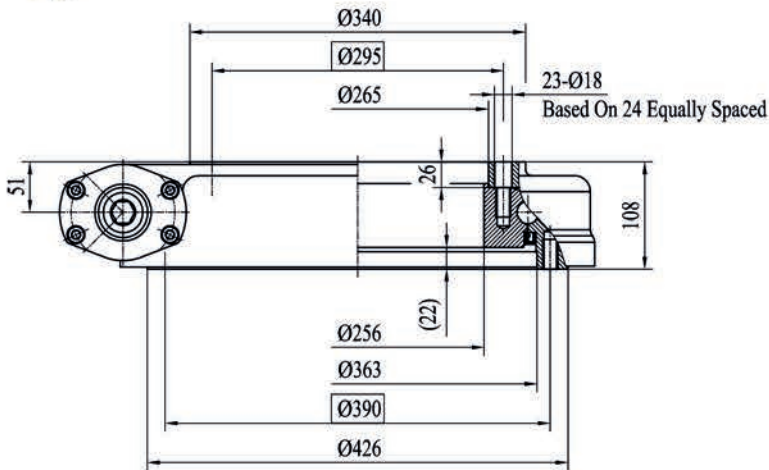
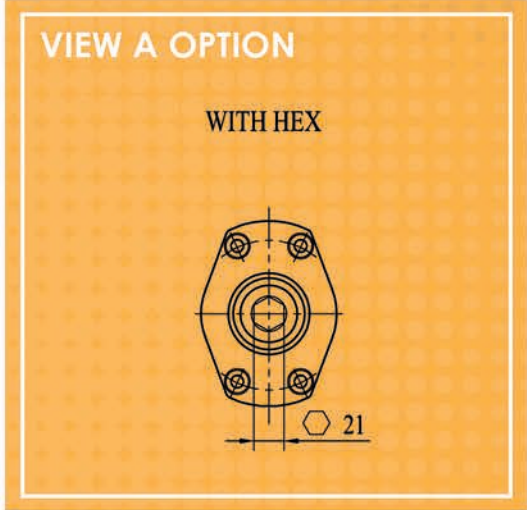
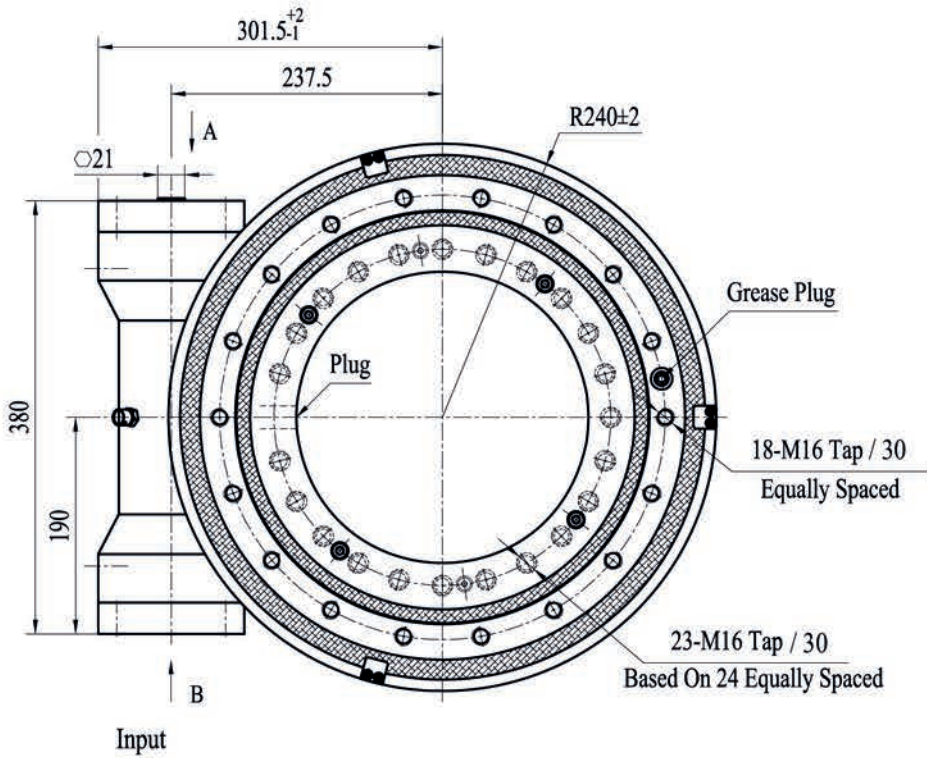
NOTE

- ▲ MAKE SURE YOU STAY BELOW THIS LINE
- ▲ THIS DRAWING IS JUST FOR YOUR REFERENCE
- ▲ THE DRAWING IS SUBJECT TO CHANGE DUE TO NEW DESIGN WITHOUT PRIOR NOTICE

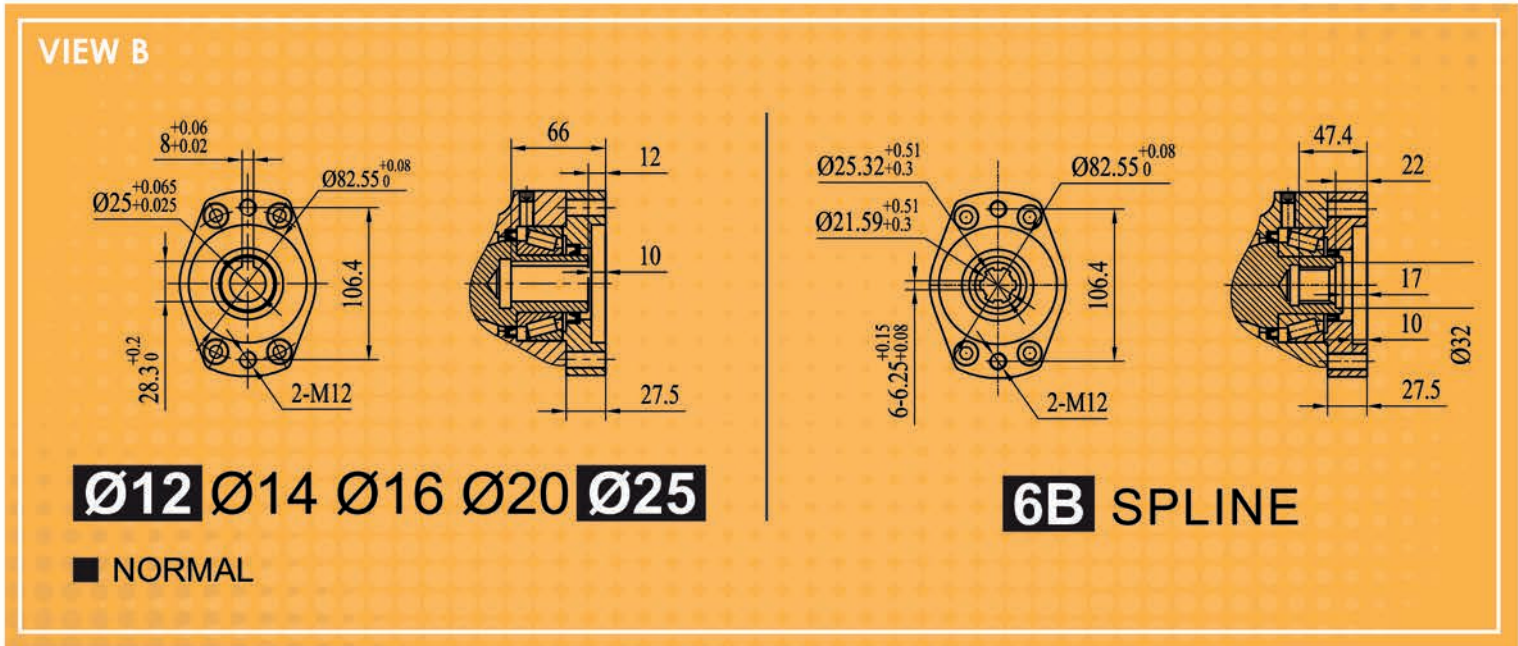
For more information, please contact with us as follows

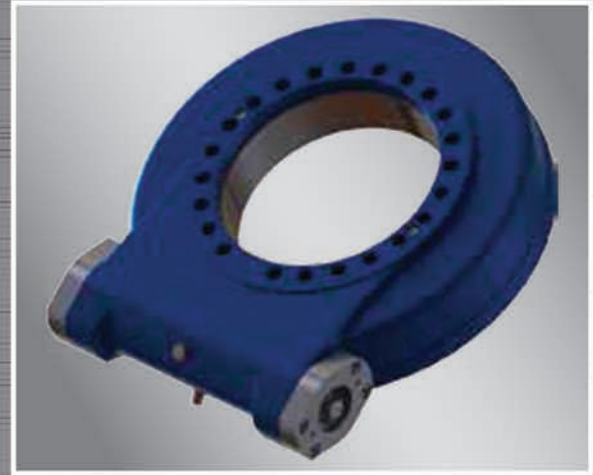
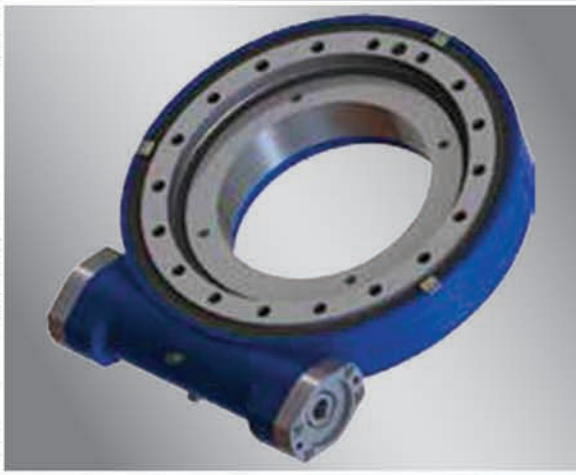
HSE14 - SLEWING DRIVE

UNITS: mm



 **82kg**



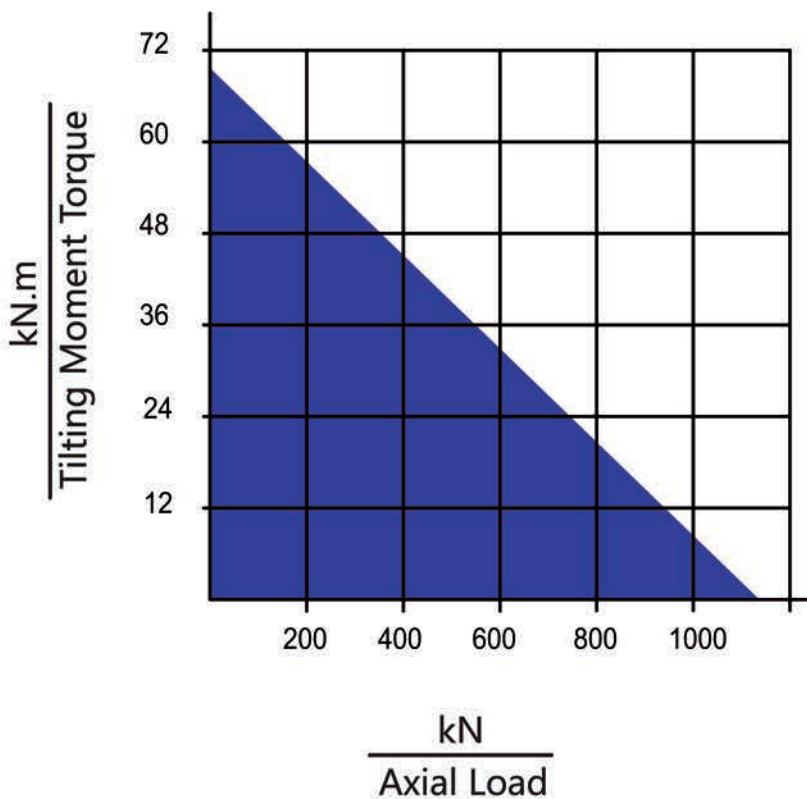


HSE14 | Slewing Drive Performance Parameters

Data Model	Output Torque	Tilting Moment Torque	Holding Torque	Static Axial Rating	Static Radial Rating	Dynamic Axial Rating	Dynamic Radial Rating	Gear Ratio	Tracking Precision	Weight
HSE14	10.8 kN.m	71.2 kN.m	48 kN.m	960 kN	360 kN	230 kN	200 kN	86 : 1	$\leq 0.13^\circ$	82 kg

MOMENT LOAD CHART

Axial Load & Tilting Moment



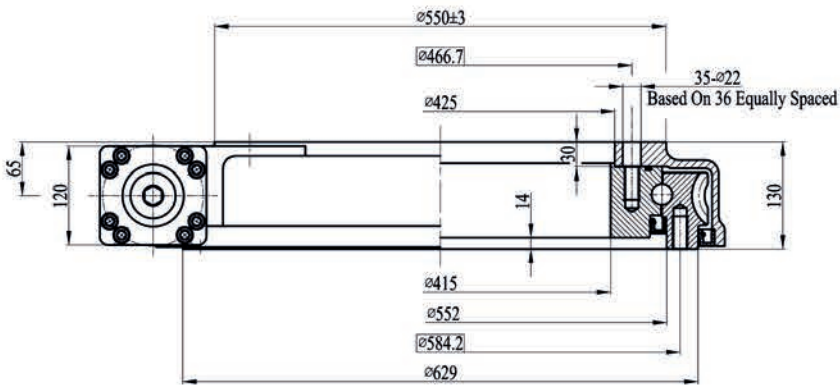
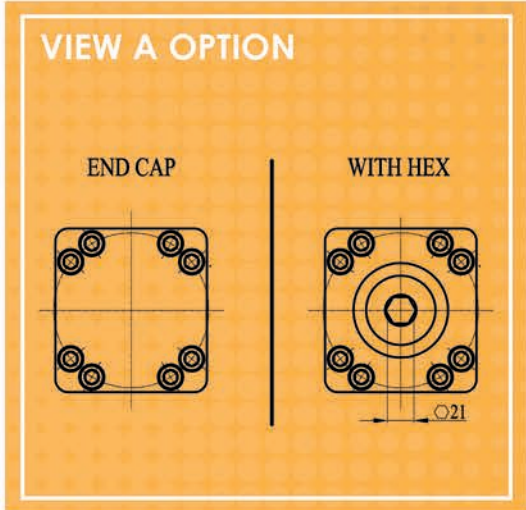
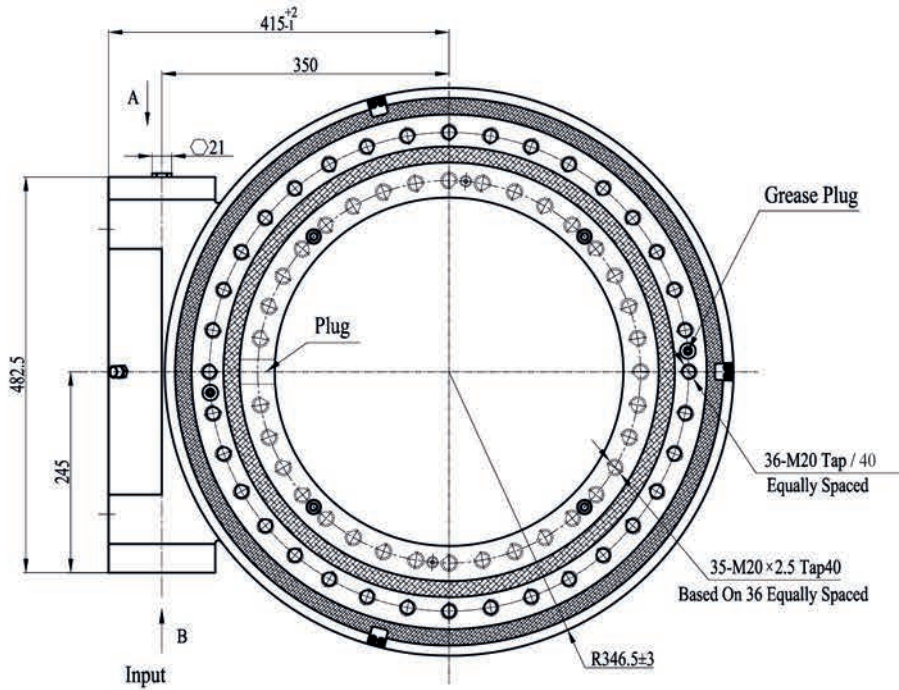
NOTE

- ▲ PLEASE BE SURE TO REMAIN UNDER THIS CURVE
- ▲ THIS DRAWING IS JUST FOR YOUR REFERENCE
- ▲ THE DRAWING IS SUBJECT TO CHANGE DUE TO NEW DESIGN WITHOUT PRIOR NOTICE

For more information, please contact with us as follows

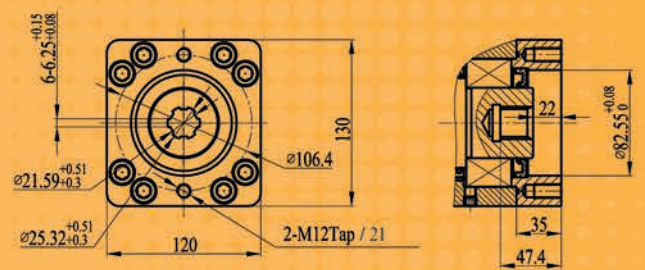
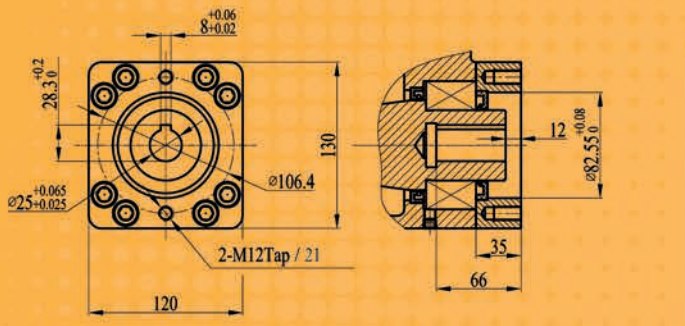
HSE21 - SLEWING DRIVE

UNITS: mm



 **188kg**

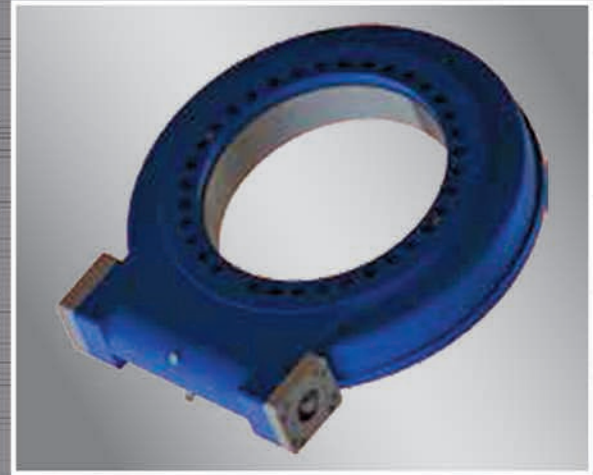
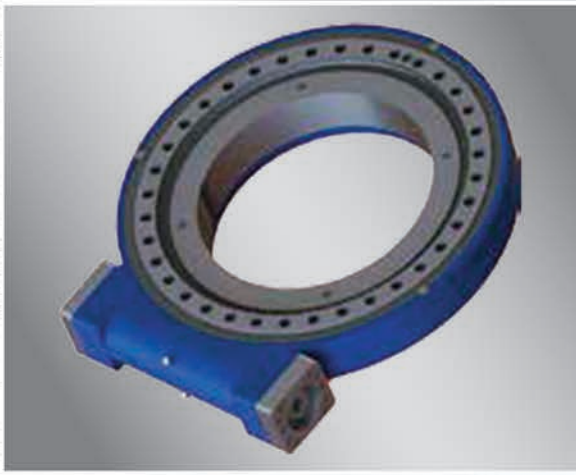
VIEW B



Ø12 Ø14 Ø16 Ø20 Ø25

6B SPLINE

■ NORMAL

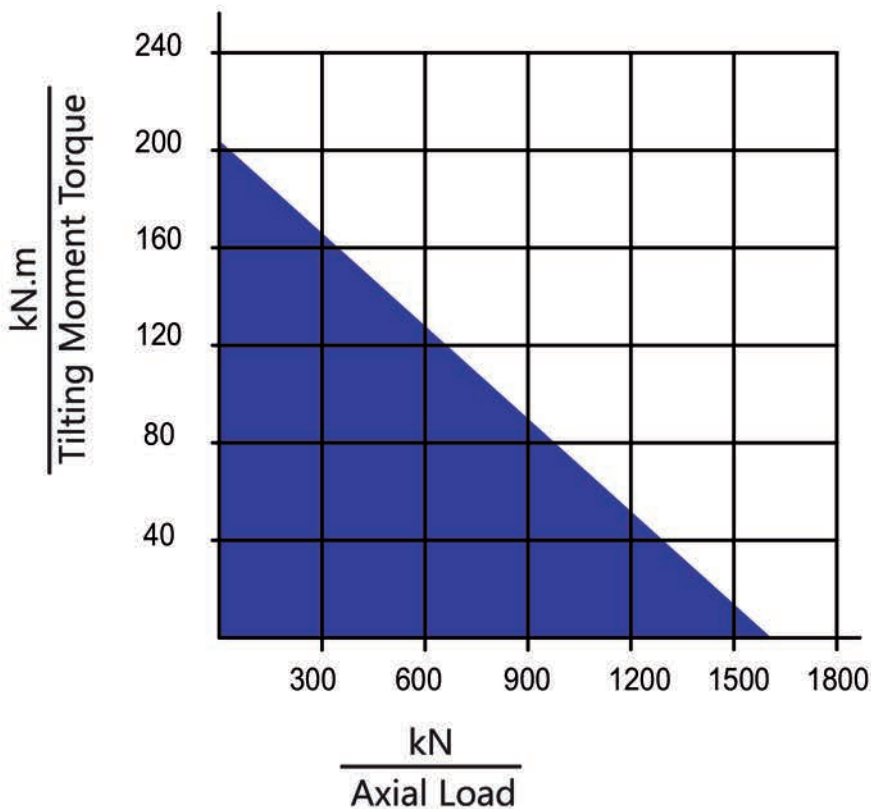


HSE21 | Slewing Drive Performance Parameters

Model	Data	Output Torque	Tilting Moment Torque	Holding Torque	Static Axial Rating	Static Radial Rating	Dynamic Axial Rating	Dynamic Radial Rating	Gear Ratio	Tracking Precision	Weight
HSE21		28.7 kN.m	203 kN.m	105.8 kN.m	1598 kN	640 kN	385 kN	335 kN	90 : 1	≤ 0.1°	188 kg

MOMENT LOAD CHART

Axial Load & Tilting Moment



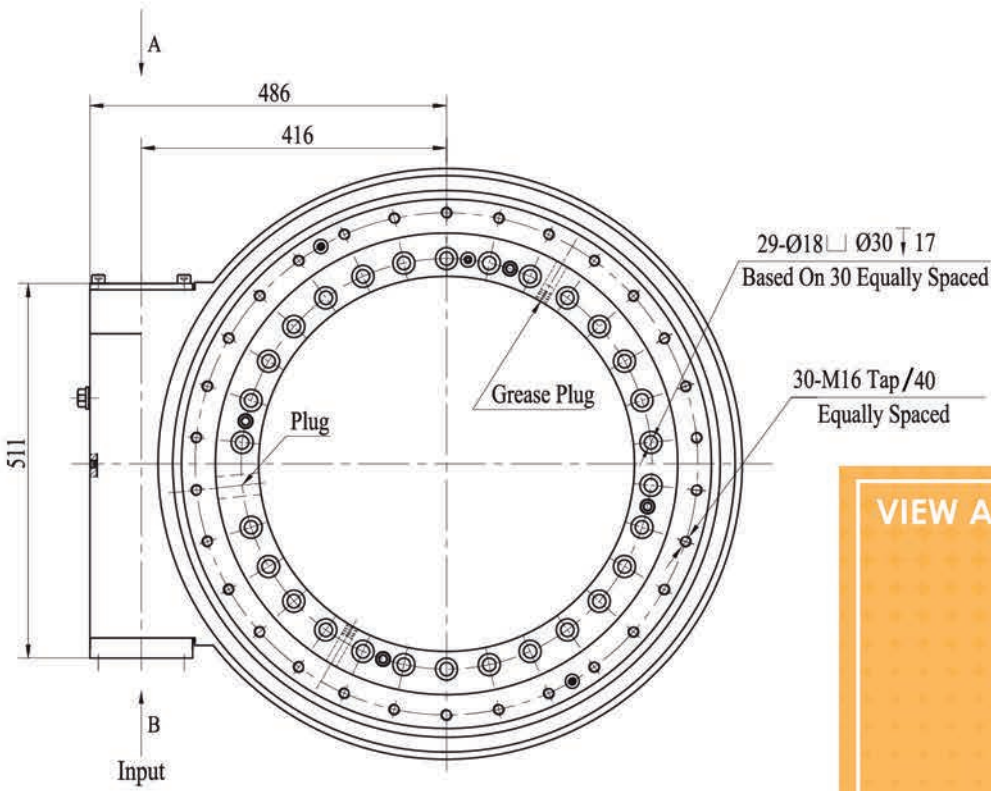
NOTE

- ▲ PLEASE BE SURE TO REMAIN UNDER THIS CURVE
- ▲ THIS DRAWING IS JUST FOR YOUR REFERENCE
- ▲ THE DRAWING IS SUBJECT TO CHANGE DUE TO NEW DESIGN WITHOUT PRIOR NOTICE

For more information, please contact with us as follows

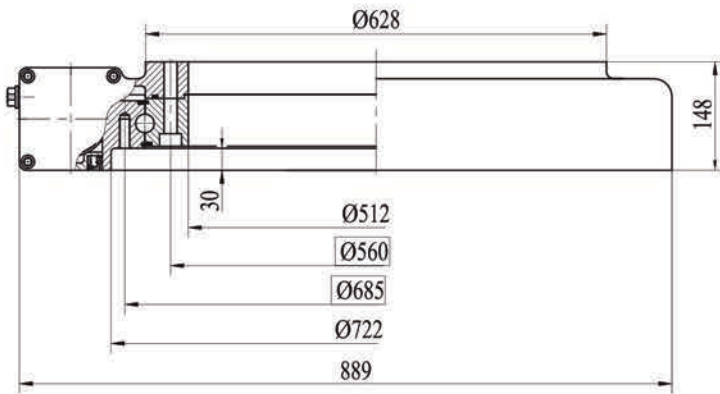
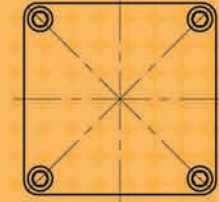
HSE25 - SLEWING DRIVE

UNITS: mm

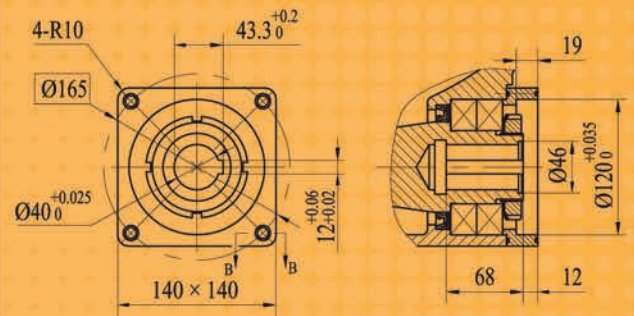


VIEW A

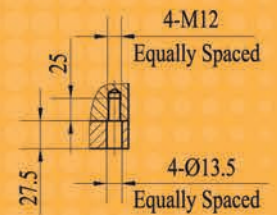
END CAP



VIEW B



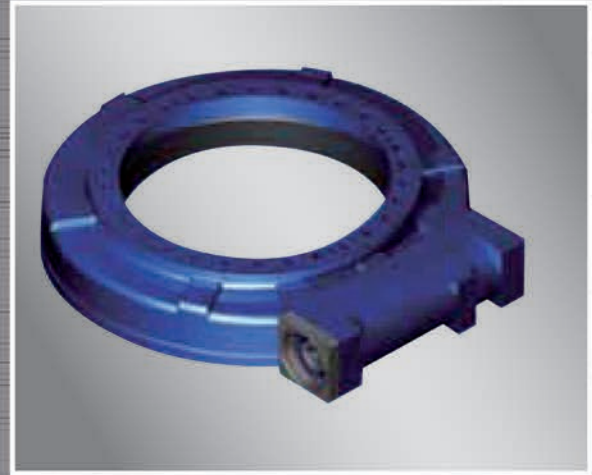
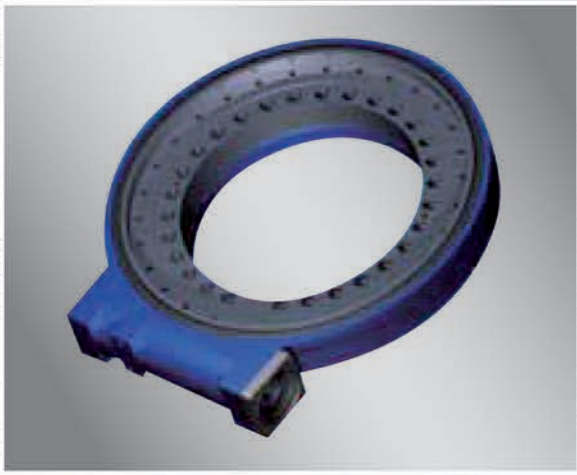
B-B



255kg

$\varnothing 40$

■ NORMAL

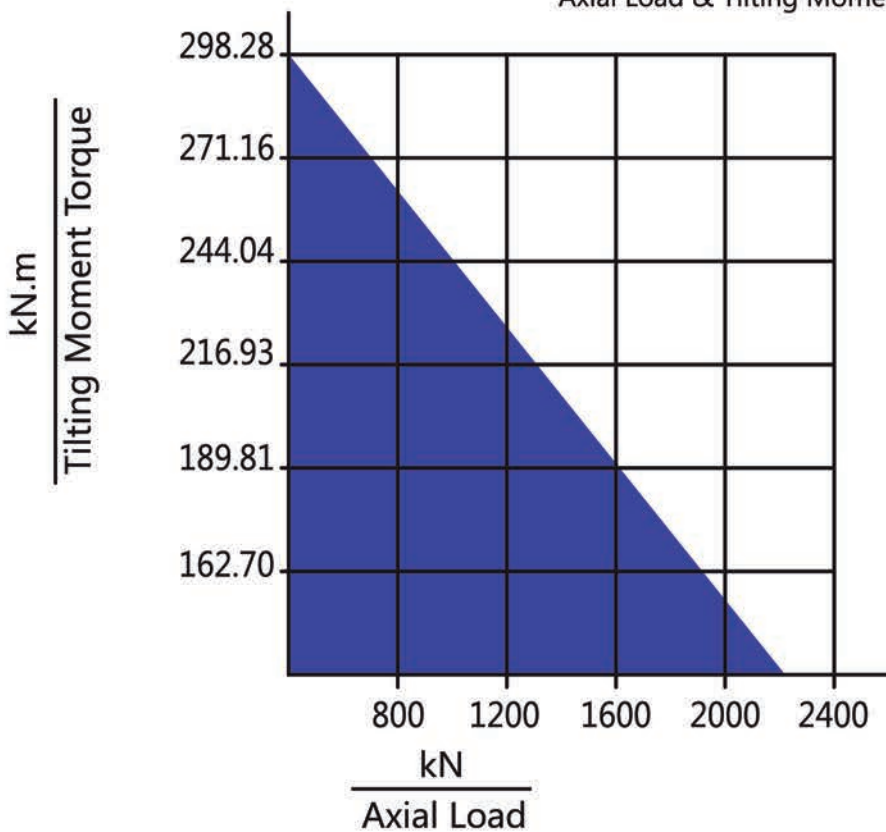


HSE25 | Slewing Drive Performance Parameters

Data Model	Output Torque	Max Output Torque	Tilting Moment Torque	Static Axial Rating	Static Radial Rating	Dynamic Axial Rating	Dynamic Radial Rating	Gear Ratio	Tracking Precision	Weight
HSE25	25 kN.m	30 kN.m	271 kN.m	2360 kN	945 kN	590 kN	470 kN	94 : 1	≤ 0.15°	255kg

MOMENT LOAD CHART

Axial Load & Tilting Moment



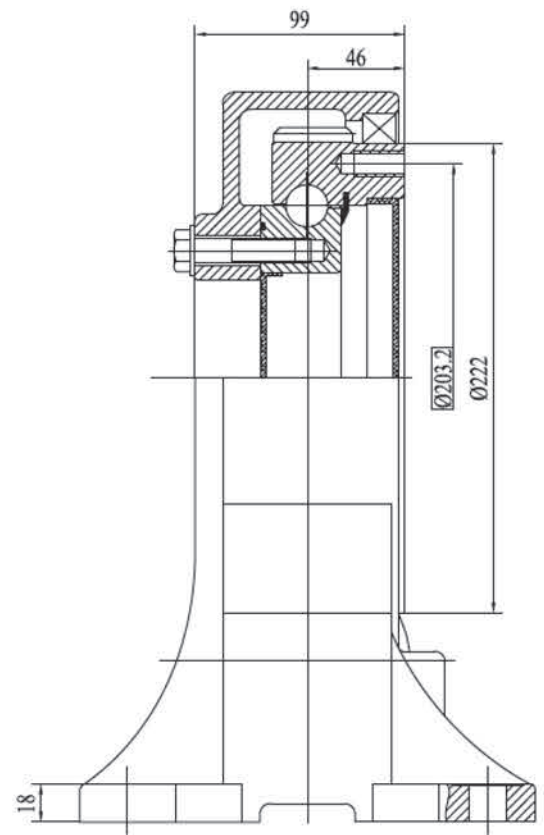
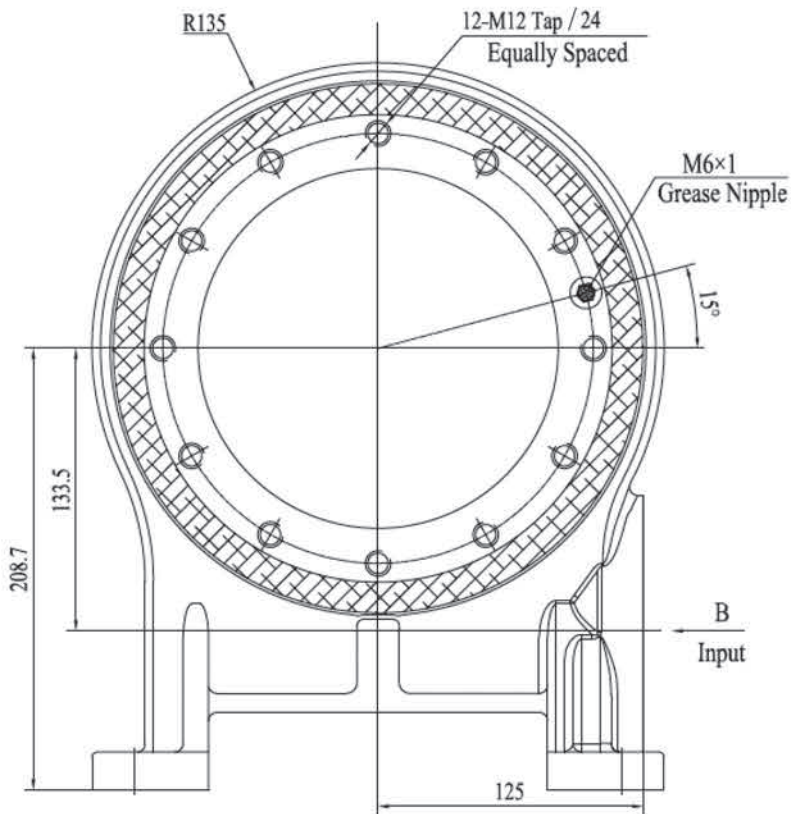
NOTE

- ▲ MAKE SURE YOU STAY BELOW THIS LINE
- ▲ THIS DRAWING IS JUST FOR YOUR REFERENCE
- ▲ THE DRAWING IS SUBJECT TO CHANGE DUE TO NEW DESIGN WITHOUT PRIOR NOTICE

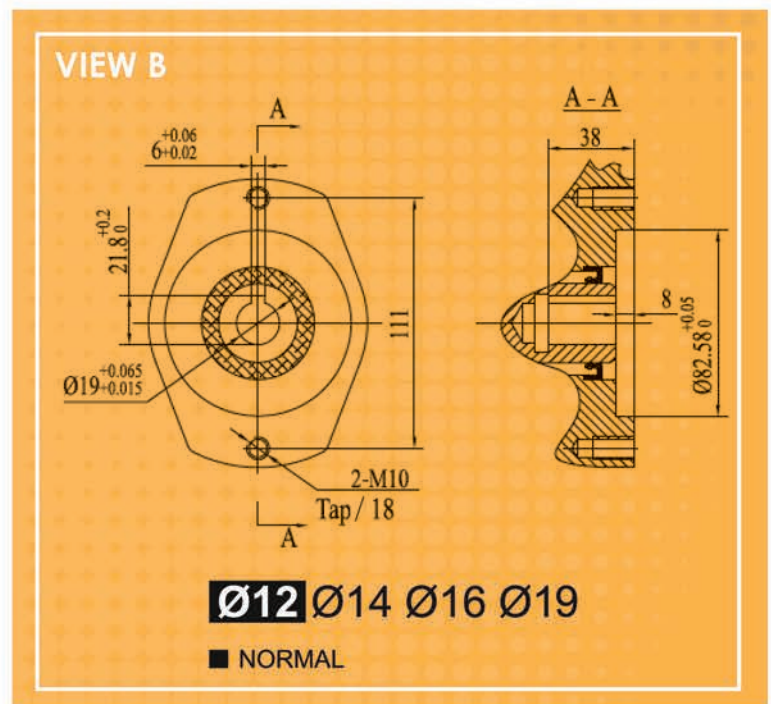
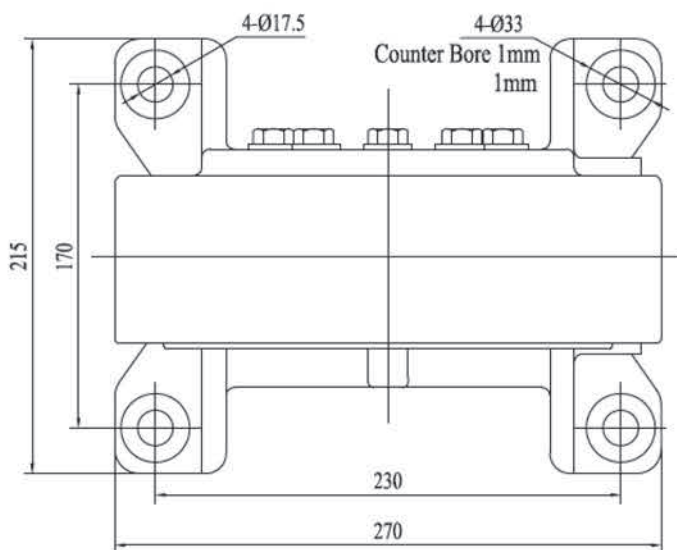
For more information, please contact with us as follows

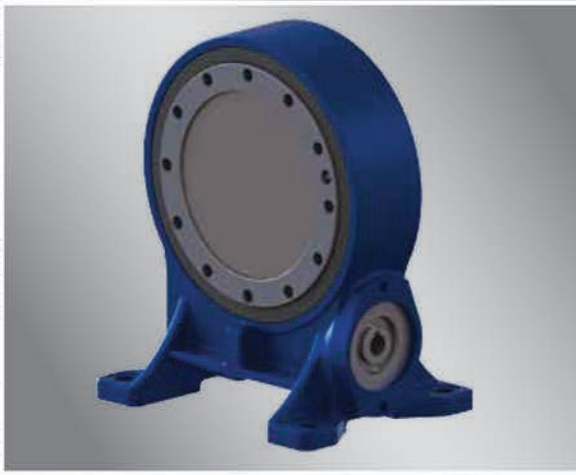
VE7E / PVE7E - SLEWING DRIVE

UNITS: mm



 **32 kg**



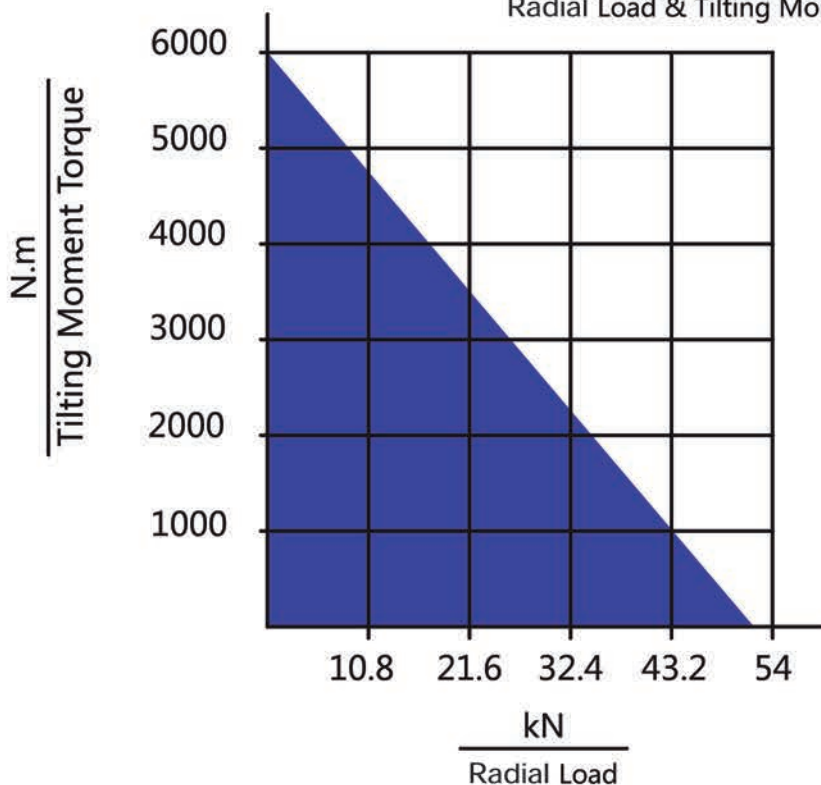


VE7E/PVE7E | Slewing Drive Performance Parameters

Data Model	Output Torque	Tilting Moment Torque	Holding Torque	Static Axial Rating	Static Radial Rating	Dynamic Axial Rating	Dynamic Radial Rating	Gear Ratio	Tracking Precision	Weight
VE7E	1500 N.m	6000 N.m	10400 N.m	133 kN	53 kN	32 kN	28 kN	73 : 1	$\leq 0.2^\circ$	32 kg
PVE7E	1500 N.m	6000 N.m	10400 N.m	133 kN	53 kN	32 kN	28 kN	73 : 1	$\leq 0.2^\circ$	32 kg

MOMENT LOAD CHART

Radial Load & Tilting Moment



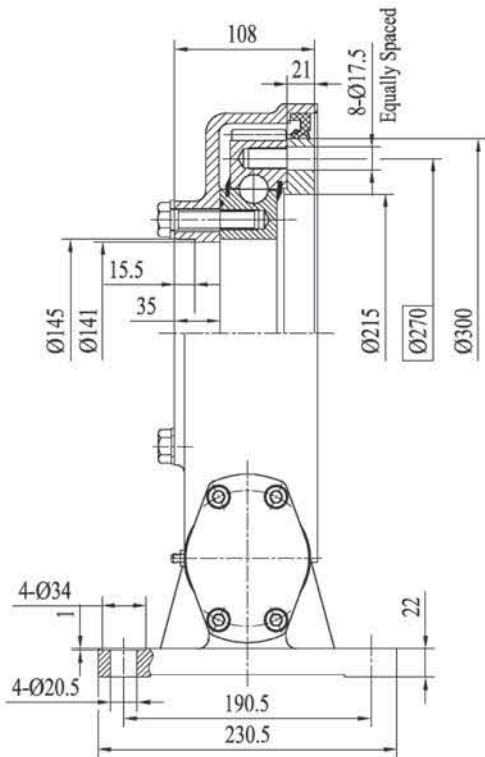
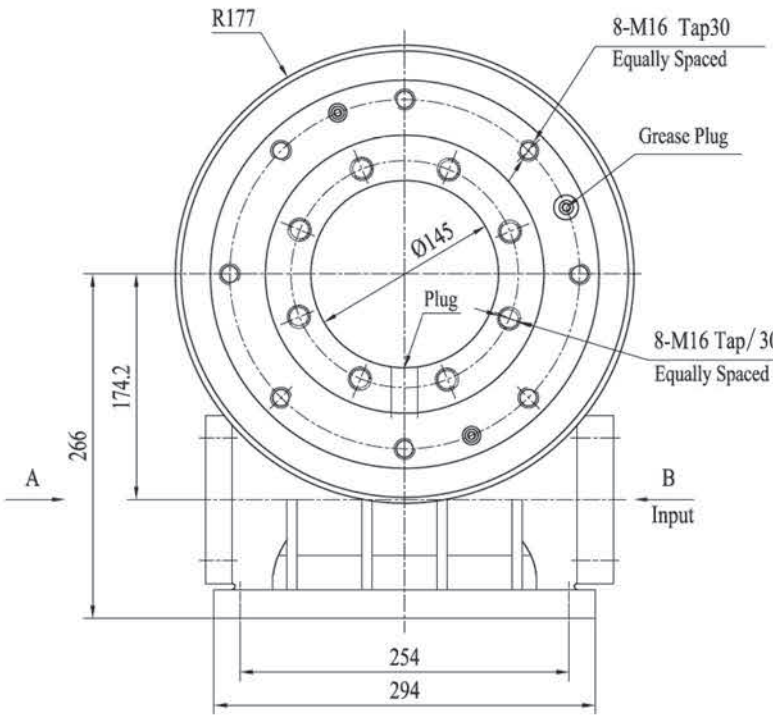
NOTE

- ▲ PLEASE BE SURE TO REMAIN UNDER THIS CURVE
- ▲ THIS DRAWING IS JUST FOR YOUR REFERENCE
- ▲ THE DRAWING IS SUBJECT TO CHANGE DUE TO NEW DESIGN WITHOUT PRIOR NOTICE

For more information, please contact with us as follows

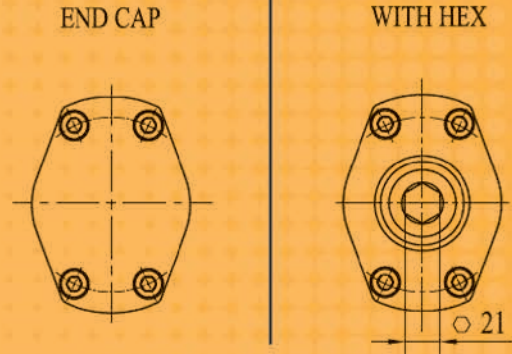
VE9A / PVE9A - SLEWING DRIVE

UNITS: mm

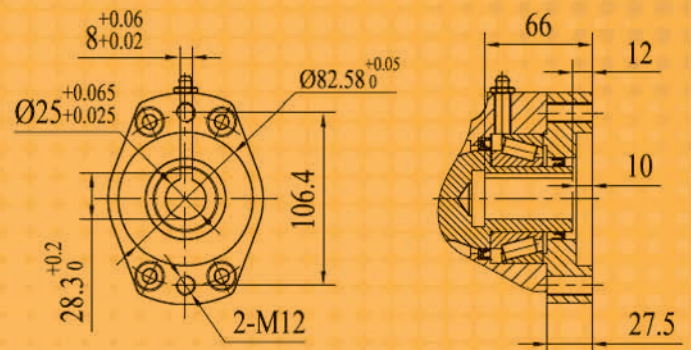


 **58 kg**

VIEW A OPTION

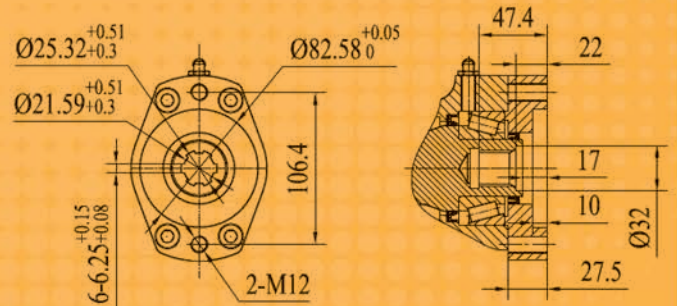


VIEW B OPTION

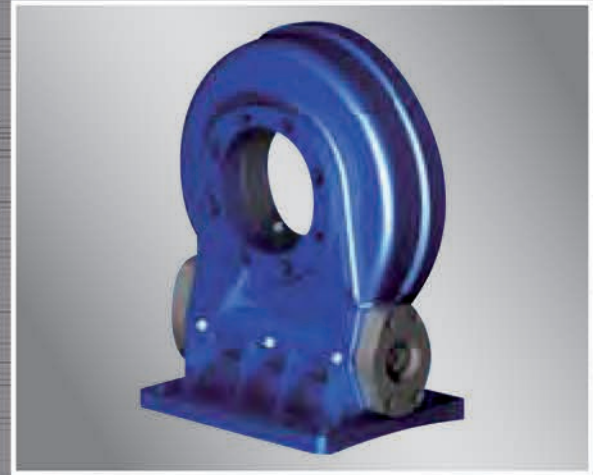
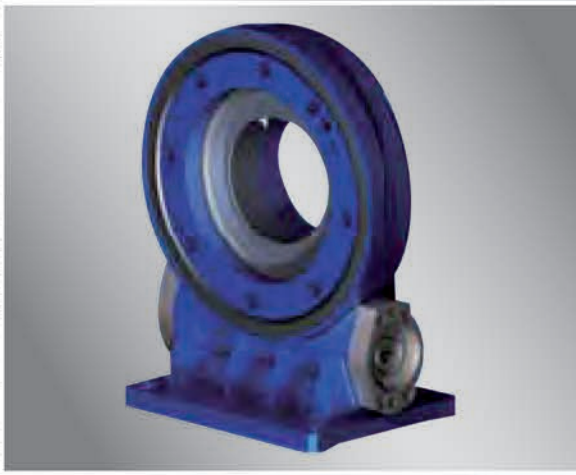


Ø12 Ø14 Ø16 Ø20 Ø25

■ NORMAL



6B SPLINE

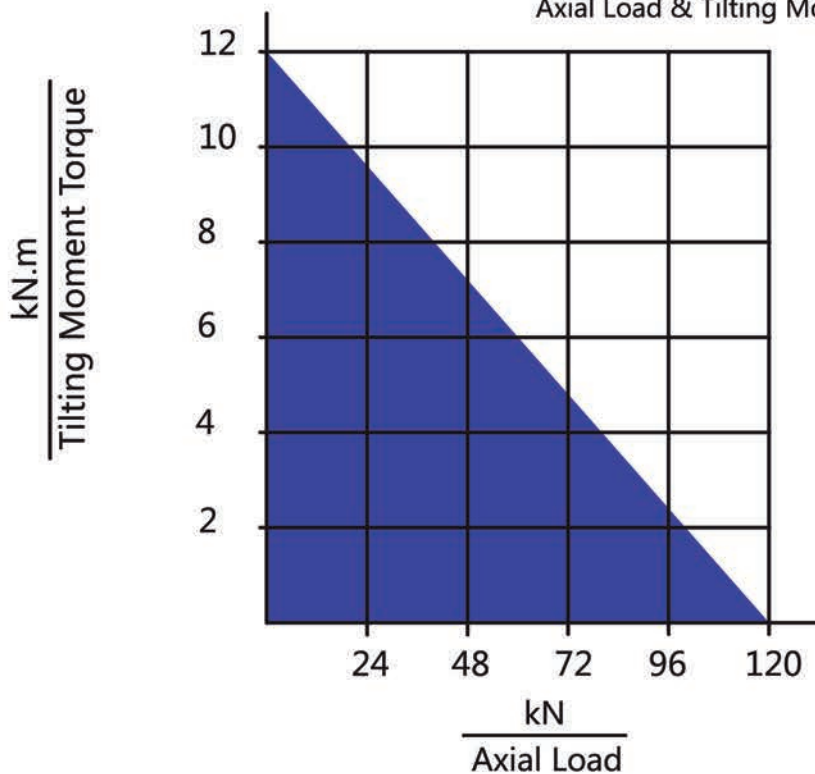


VE9A/PVE9A | Slewing Drive Performance Parameters

Data Model	Output Torque	Tilting Moment Torque	Holding Torque	Static Axial Rating	Static Radial Rating	Dynamic Axial Rating	Dynamic Radial Rating	Gear Ratio	Tracking Precision	Weight
VE9A	6.5 kN.m	12 kN.m	50 kN.m	338 kN	120 kN	81 kN	61 kN	61 : 1	$\leq 0.17^\circ$	58 kg
PVE9A	6.5 kN.m	12 kN.m	50 kN.m	338 kN	120 kN	81 kN	61 kN	61 : 1	I : $\leq 0.05^\circ$ II : $\leq 0.07^\circ$ III : $\leq 0.09^\circ$	58 kg

MOMENT LOAD CHART

Axial Load & Tilting Moment



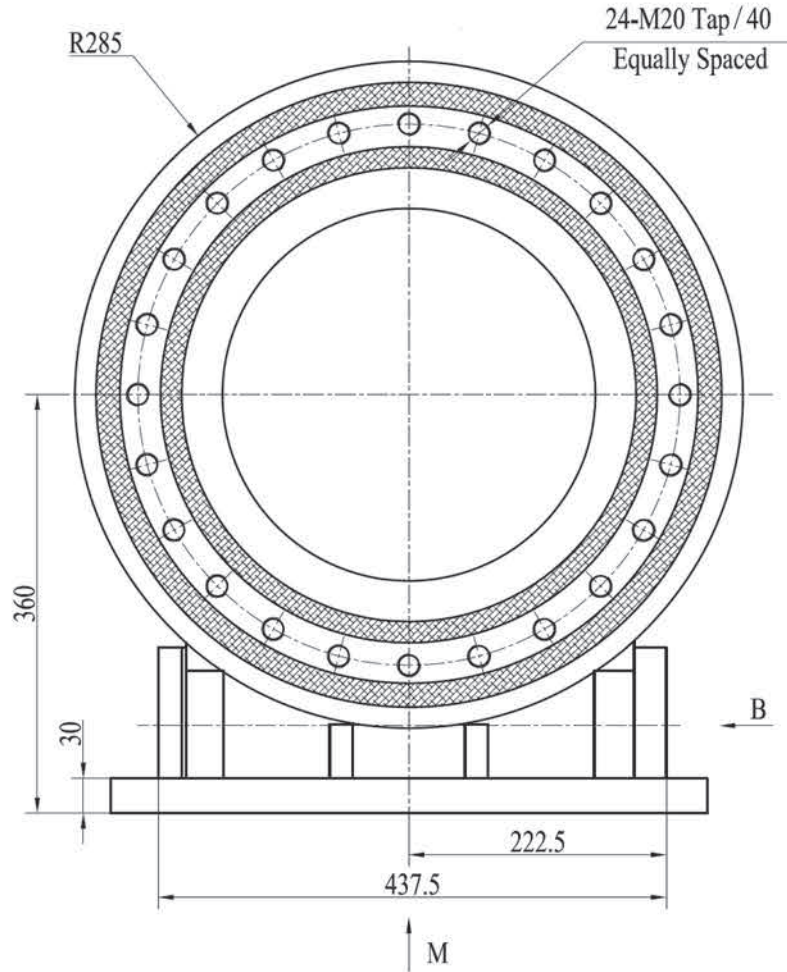
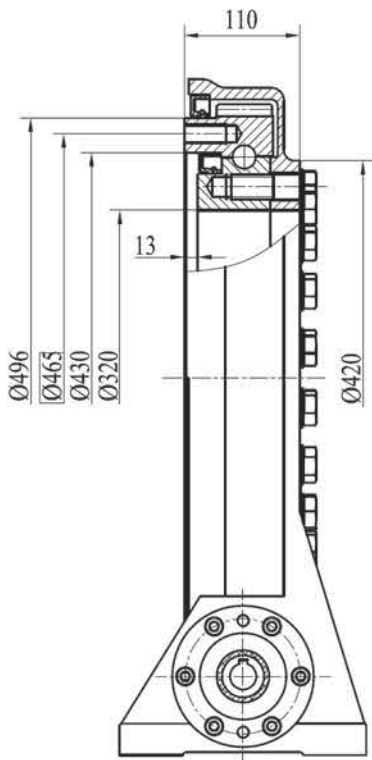
NOTE

- ▲ PLEASE BE SURE TO REMAIN UNDER THIS CURVE
- ▲ THIS DRAWING IS JUST FOR YOUR REFERENCE
- ▲ THE DRAWING IS SUBJECT TO CHANGE DUE TO NEW DESIGN WITHOUT PRIOR NOTICE

For more information, please contact with us as follows:

VE17/PVE17 - SLEWING DRIVE

UNITS: mm



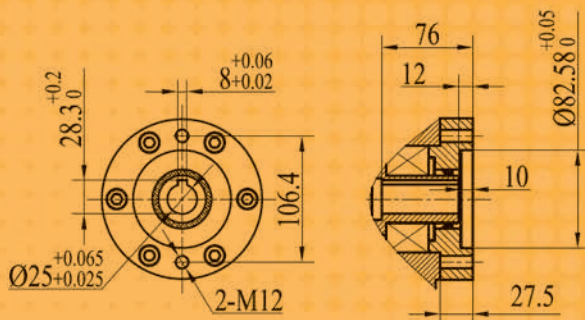
VIEW A OPTION

END CAP

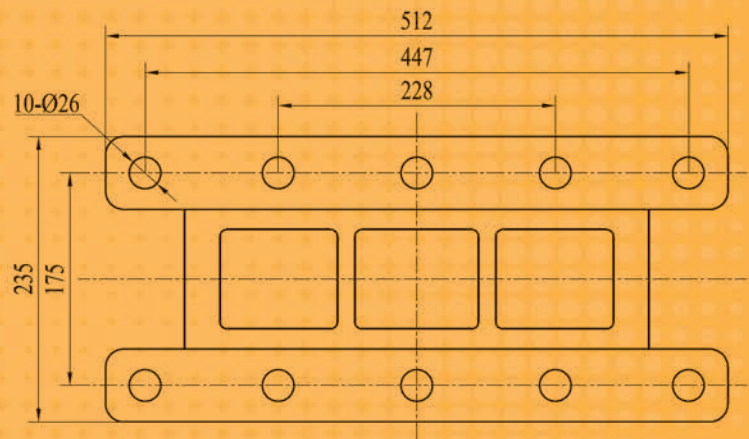


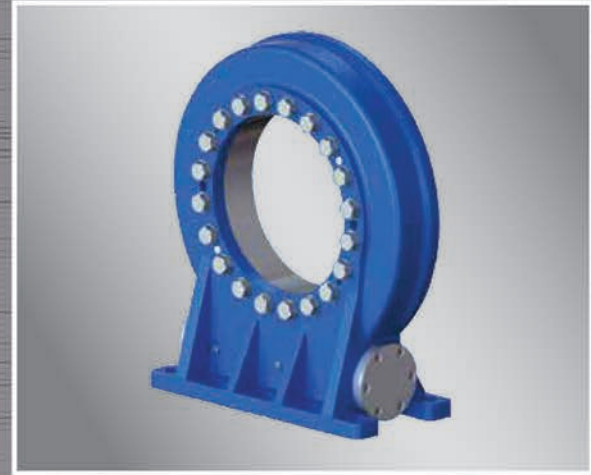
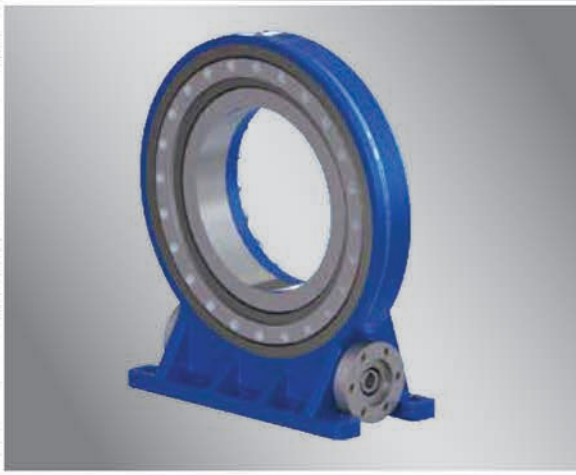
 **150 kg**

VIEW B OPTION



VIEW M OPTION



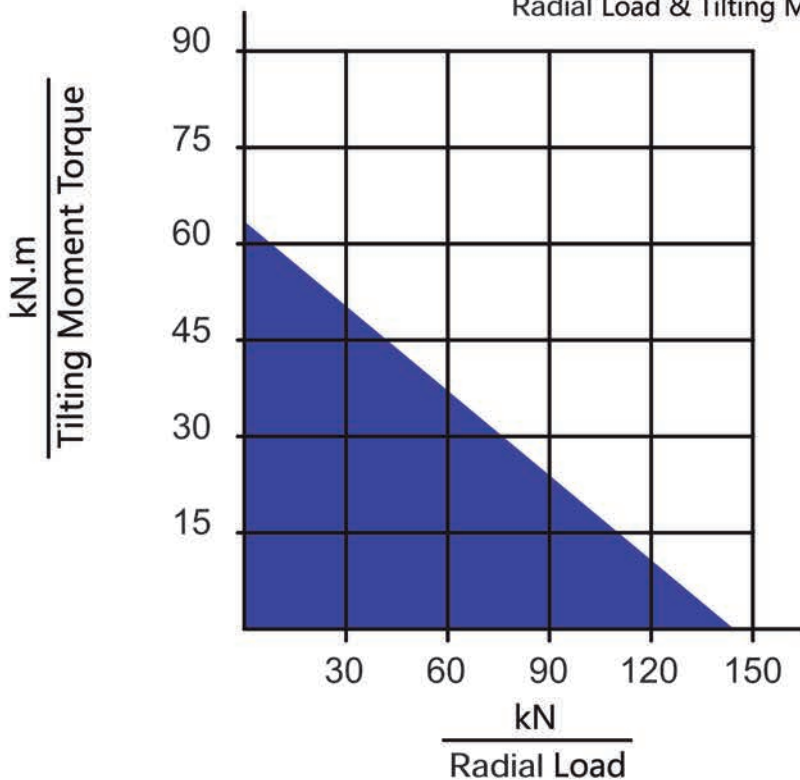


VE17/PVE17 | Slewing Drive Performance Parameters

Model \ Data	Output Torque	Tilting Moment Torque	Holding Torque	Static Axial Rating	Static Radial Rating	Gear Ratio	Tracking Precision	Weight
VE17	20 kN.m	65 kN.m	75 kN.m	50 kN	120 kN	81 : 1	$\leq 0.15^\circ$	150 kg
PVE17	20 kN.m	65 kN.m	75 kN.m	50 kN	120 kN	81 : 1	I: $\leq 0.05^\circ$ II: $\leq 0.07^\circ$ III: $\leq 0.09^\circ$	32 kg

MOMENT LOAD CHART

Radial Load & Tilting Moment



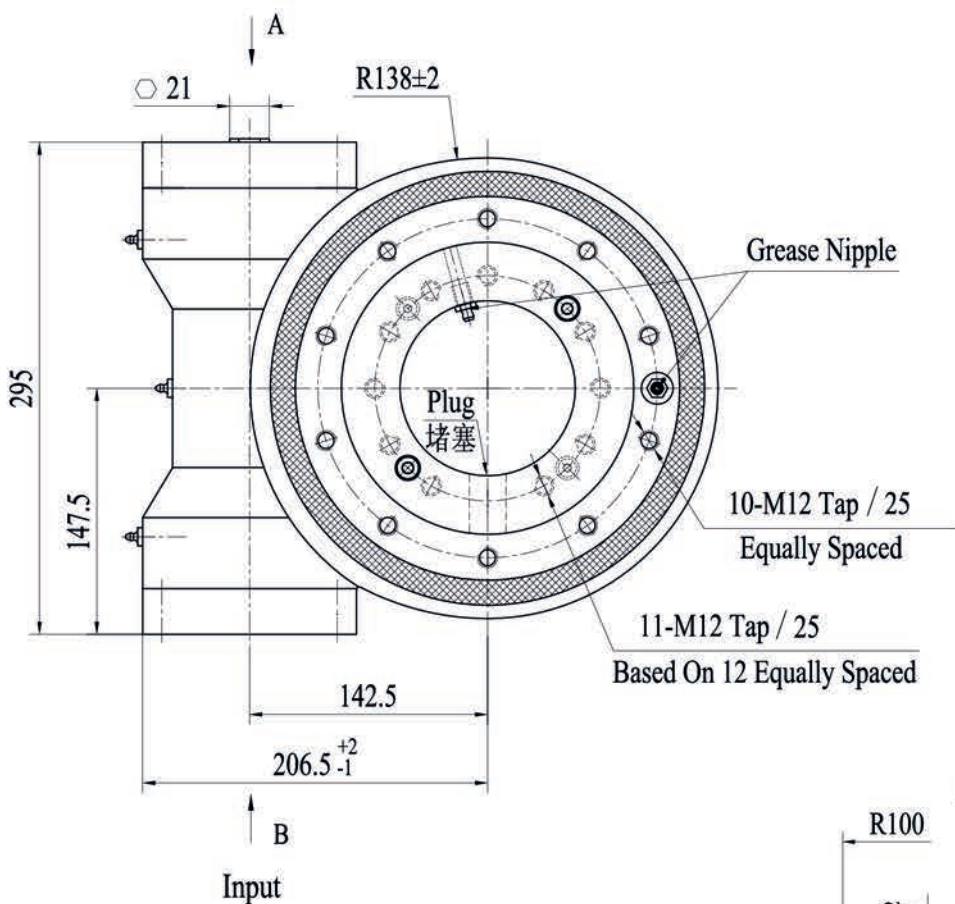
NOTE

- ▲ PLEASE BE SURE TO REMAIN UNDER THIS CURVE
- ▲ THIS DRAWING IS JUST FOR YOUR REFERENCE
- ▲ THE DRAWING IS SUBJECT TO CHANGE DUE TO NEW DESIGN WITHOUT PRIOR NOTICE

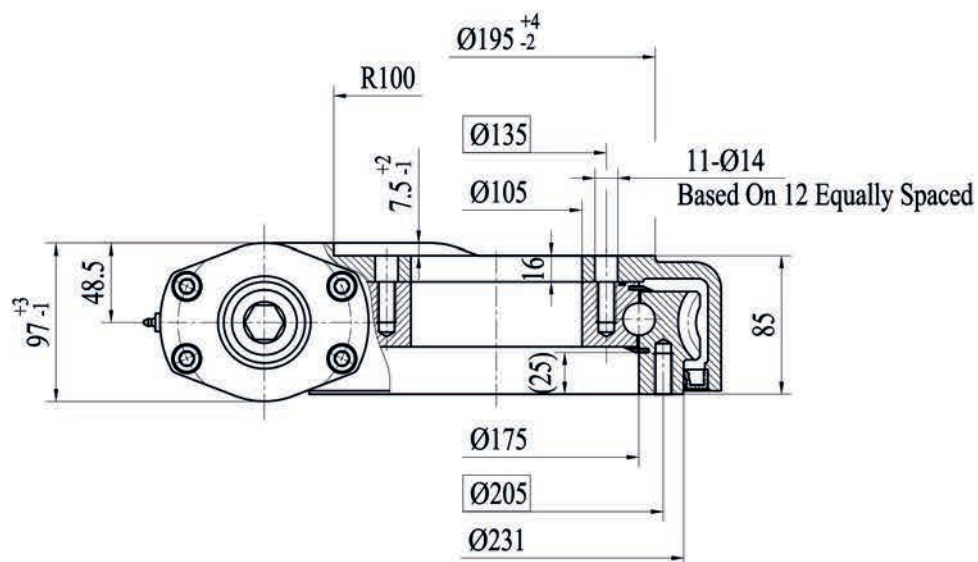
For more information, please contact with us as follows

WEA7 - WORM DRIVE

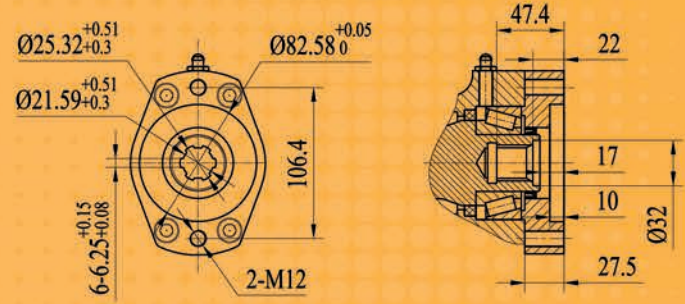
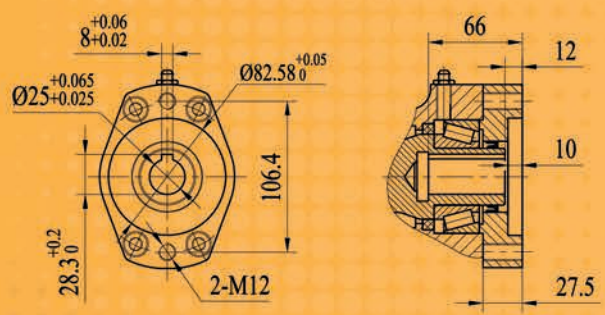
UNITS: mm



 **35 kg**



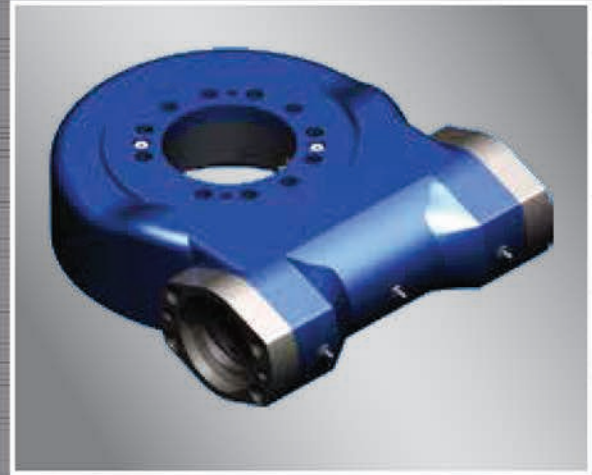
VIEW B OPTION



Ø12 Ø14 Ø16 Ø20 Ø25

6B SPLINE

■ NORMAL

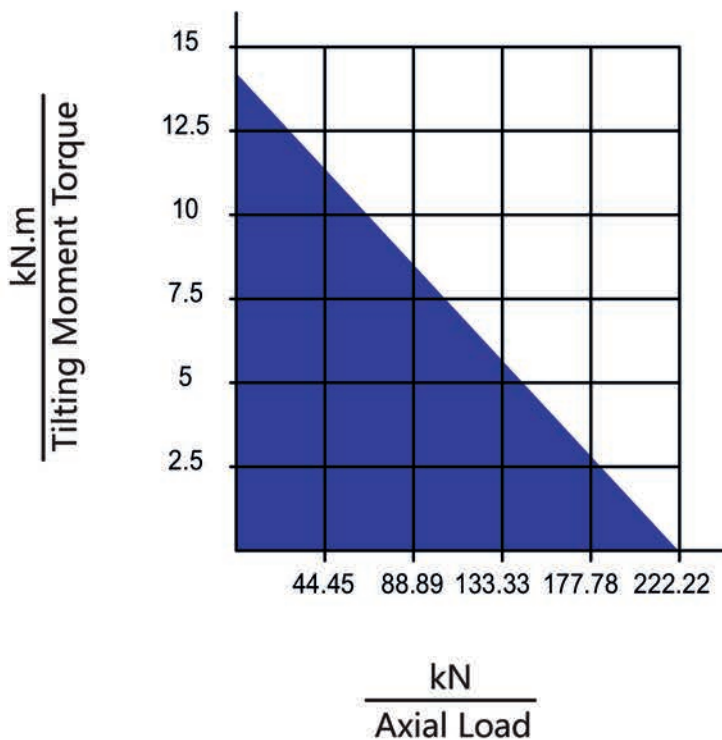


WEA7 | Worm Drive Performance Parameters

Data Model	Output Torque	Tilting Moment Torque	Holding Torque	Static Axial Rating	Static Radial Rating	Dynamic Axial Rating	Dynamic Radial Rating	Gear Ratio	Tracking Precision	Weight
WEA7	3.5 kN.m	14.2 kN.m	20 kN.m	220 kN	90 kN	63 kN	48 kN	47 : 1	$\leq 0.15^\circ$	35 kg

MOMENT LOAD CHART

Axial Load & Tilting Moment



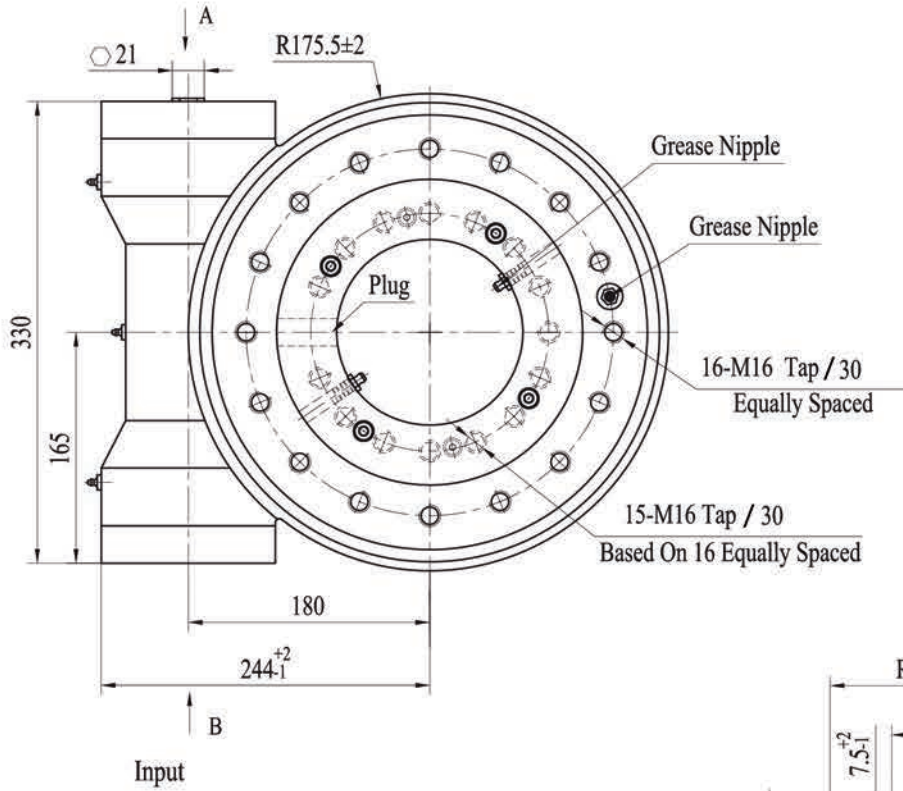
NOTE

- ▲ PLEASE BE SURE TO REMAIN UNDER THIS CURVE
- ▲ THIS DRAWING IS JUST FOR YOUR REFERENCE
- ▲ THE DRAWING IS SUBJECT TO CHANGE DUE TO NEW DESIGN WITHOUT PRIOR NOTICE

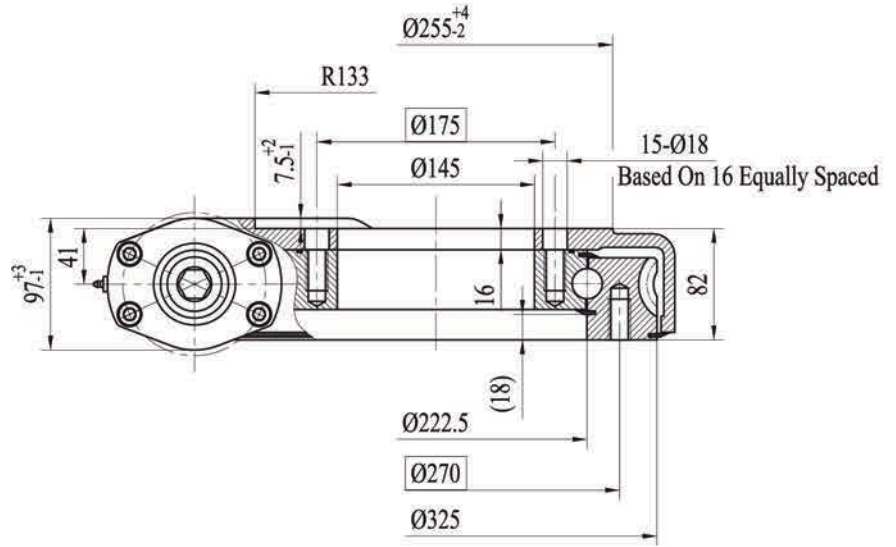
For more information, please contact with us as follows

WE9 - WORM DRIVE

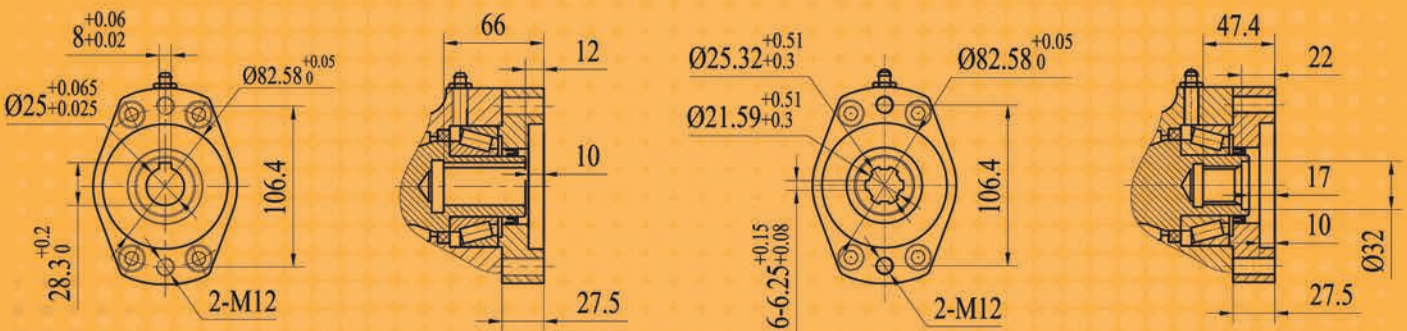
UNITS: mm



 **48.5kg**



VIEW B

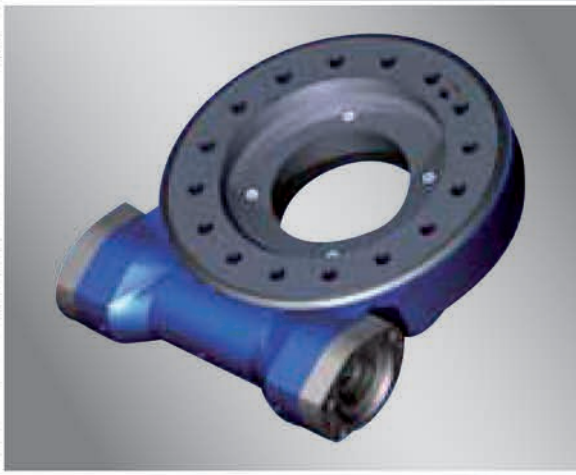


Ø12 Ø14 Ø16 Ø20 Ø25

■ NORMAL

6B SPLINE

■ NORMAL

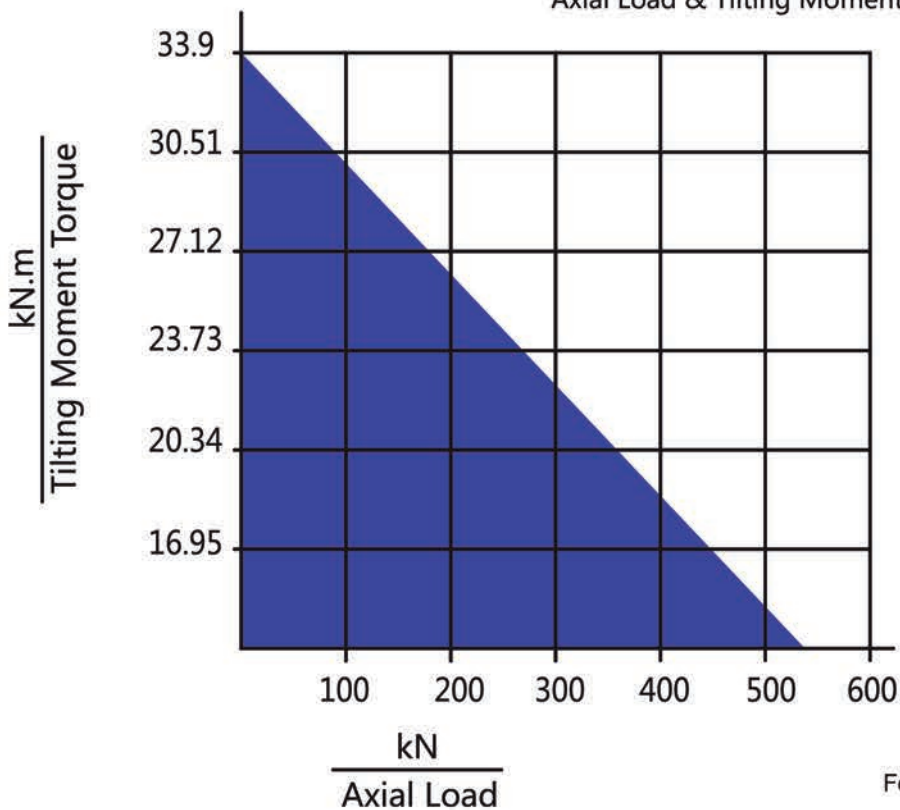


WE9 | Worm Drive Performance Parameters

Data Model	Output Torque	Tilting Moment Torque	Holding Torque	Static Axial Rating	Static Radial Rating	Dynamic Axial Rating	Dynamic Radial Rating	Gear Ratio	Tracking Precision	Weight
WE9	8 kN.m	33.9 kN.m	38.7 kN.m	550 kN	205 kN	130 kN	110 kN	62 : 1	$\leq 0.15^\circ$	48.5kg

MOMENT LOAD CHART

Axial Load & Tilting Moment



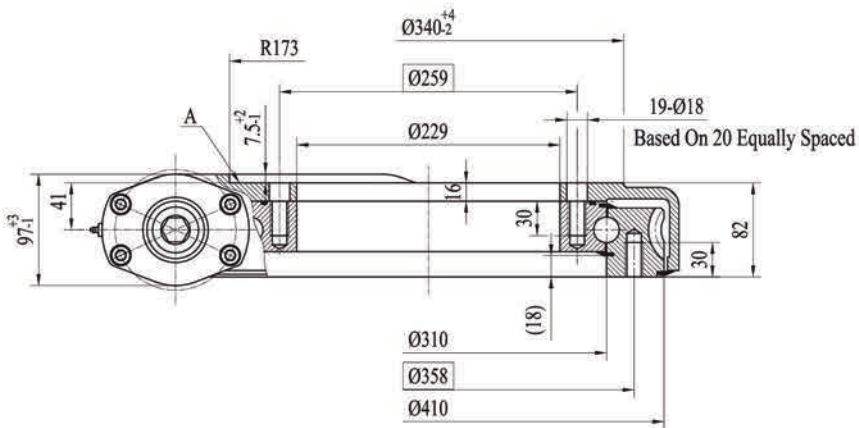
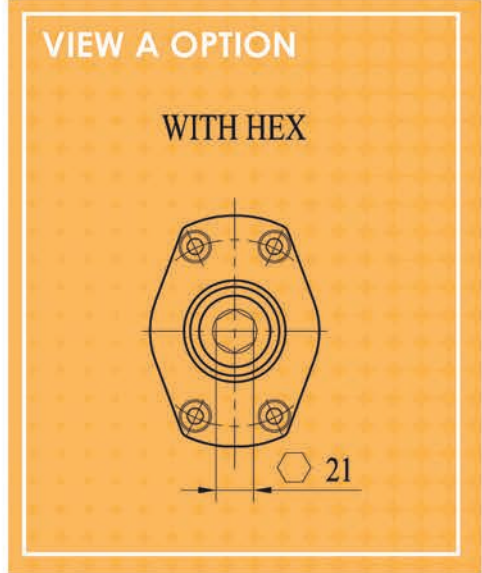
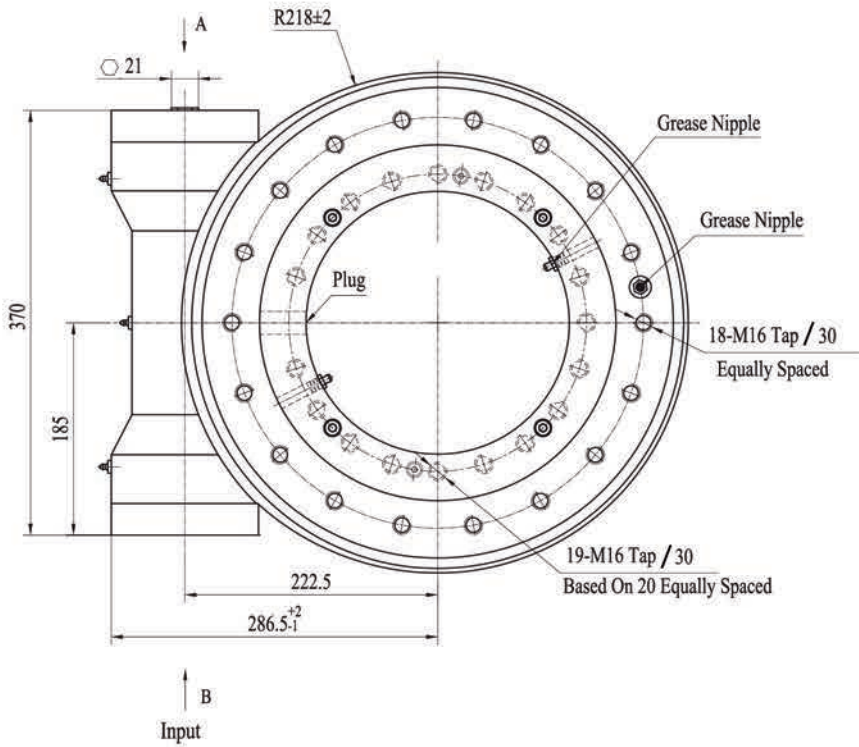
NOTE

- ▲ MAKE SURE YOU STAY BELOW THIS LINE
- ▲ THIS DRAWING IS JUST FOR YOUR REFERENCE
- ▲ THE DRAWING IS SUBJECT TO CHANGE DUE TO NEW DESIGN WITHOUT PRIOR NOTICE

For more information, please contact with us as follows

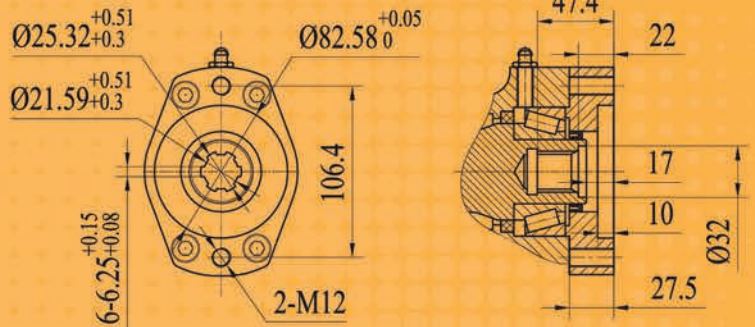
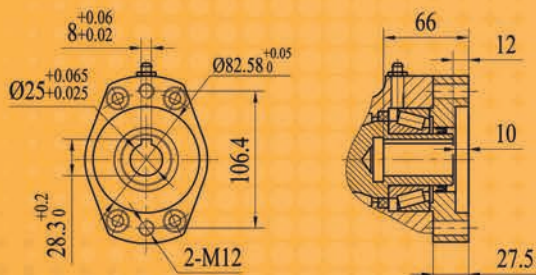
WE12 - WORM DRIVE

UNITS: mm



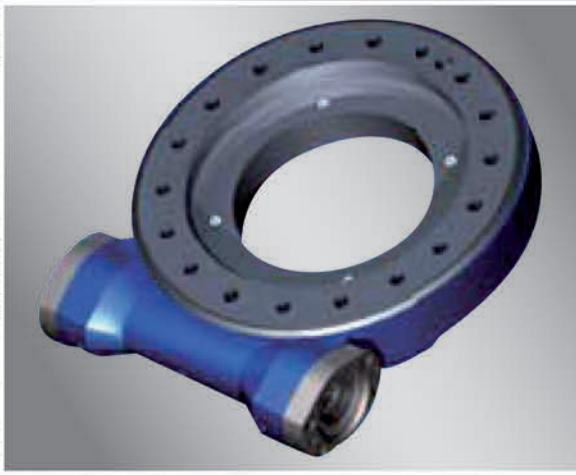
 **61kg**

VIEW B OPTION



Ø12 Ø14 Ø16 Ø20 Ø25

6B SPLINE

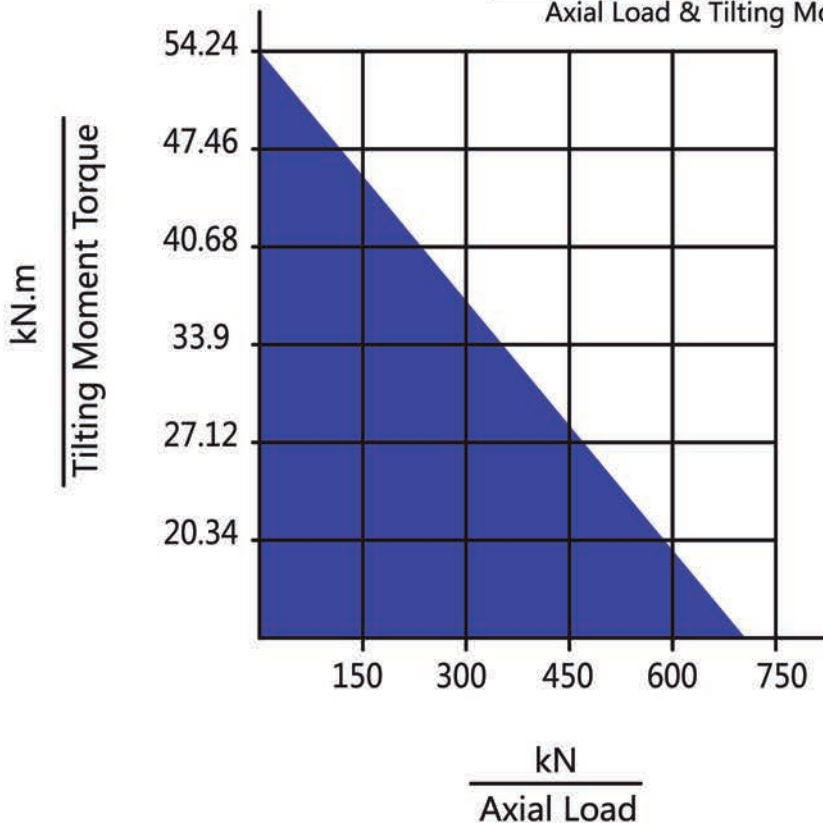


WE12 | Worm Drive Performance Parameters

Model	Data	Output Torque	Tilting Moment Torque	Holding Torque	Static Axial Rating	Static Radial Rating	Dynamic Axial Rating	Dynamic Radial Rating	Gear Ratio	Tracking Precision	Weight
WE12		9.5 kN.m	54.3 kN.m	43 kN.m	725 kN	270 kN	180 kN	140 kN	79 : 1	≤ 0.15°	61kg

MOMENT LOAD CHART

Axial Load & Tilting Moment



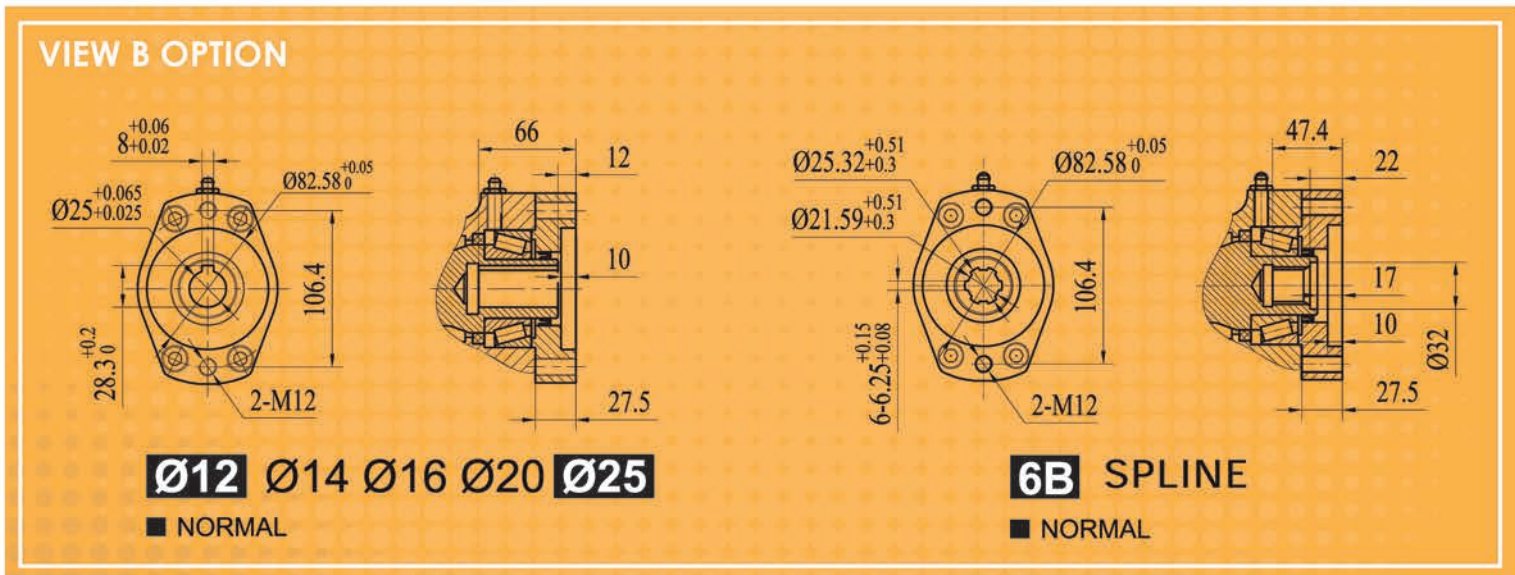
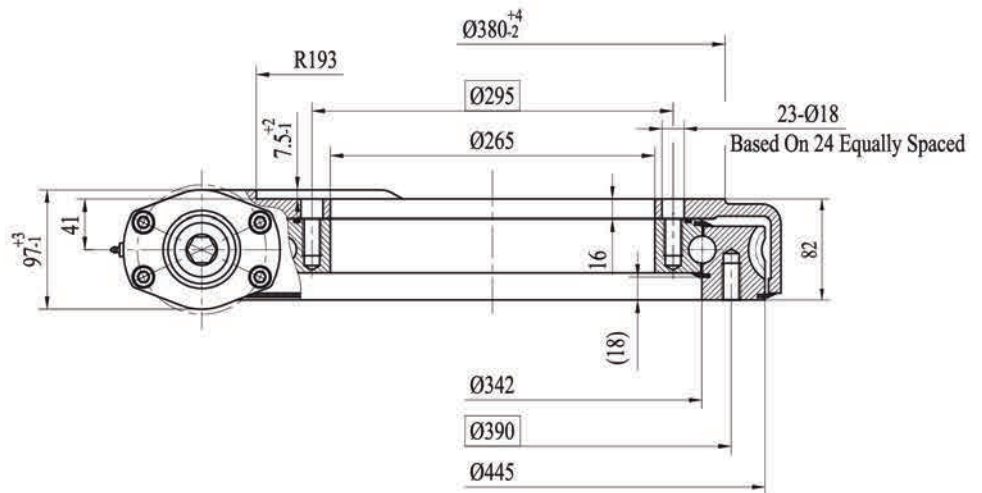
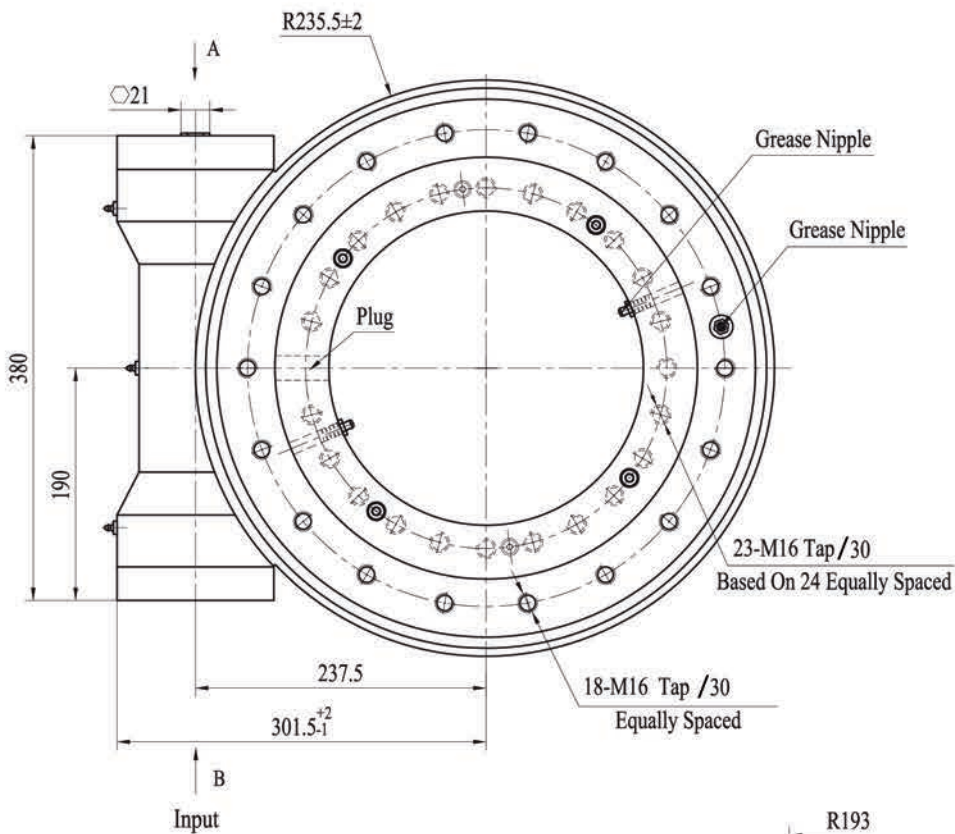
NOTE

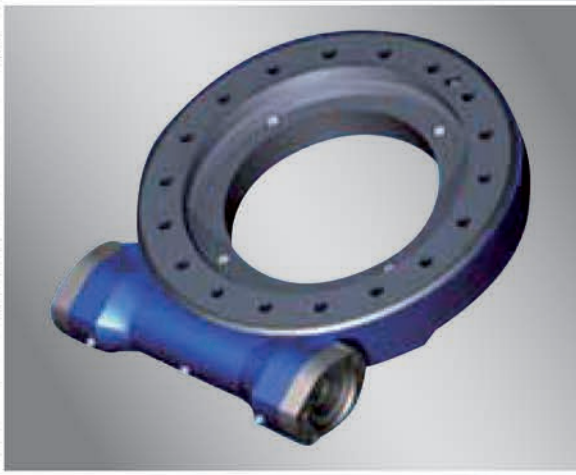
- ▲ MAKE SURE YOU STAY BELOW THIS LINE
- ▲ THIS DRAWING IS JUST FOR YOUR REFERENCE
- ▲ THE DRAWING IS SUBJECT TO CHANGE DUE TO NEW DESIGN WITHOUT PRIOR NOTICE

For more information, please contact with us as follows

WE14 - WORM DRIVE

UNITS: mm



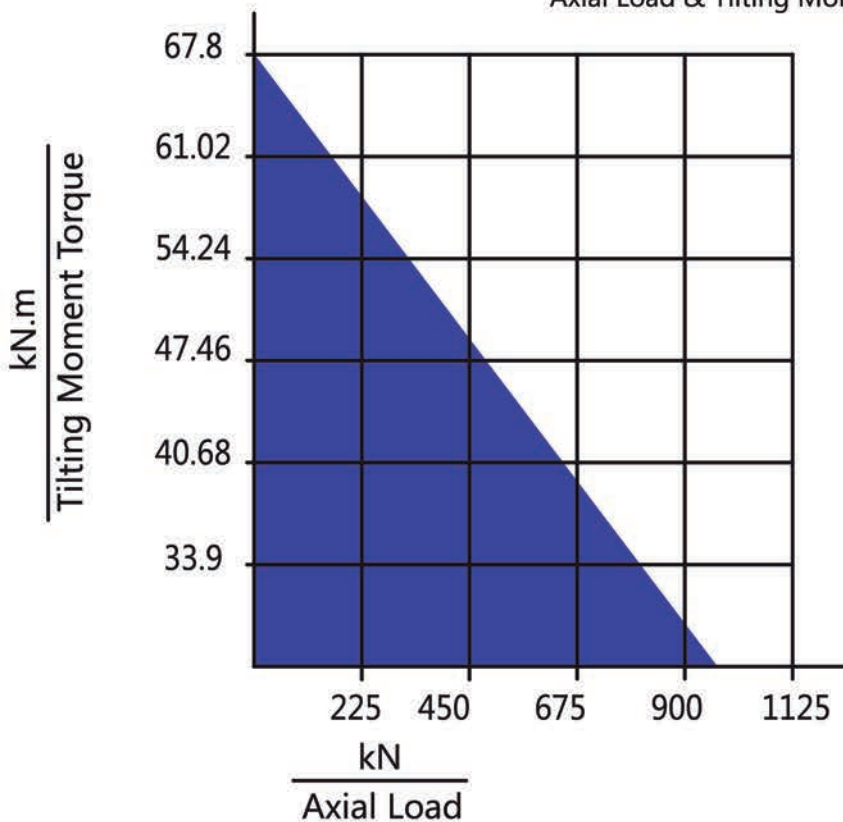


WE14 | Worm Drive Performance Parameters

Data Model	Output Torque	Tilting Moment Torque	Holding Torque	Static Axial Rating	Static Radial Rating	Dynamic Axial Rating	Dynamic Radial Rating	Gear Ratio	Tracking Precision	Weight
WE14	10.8 kN.m	67.8 kN.m	48 kN.m	920 kN	343 kN	220 kN	190 kN	86 : 1	≤ 0.13°	68kg

MOMENT LOAD CHART

Axial Load & Tilting Moment



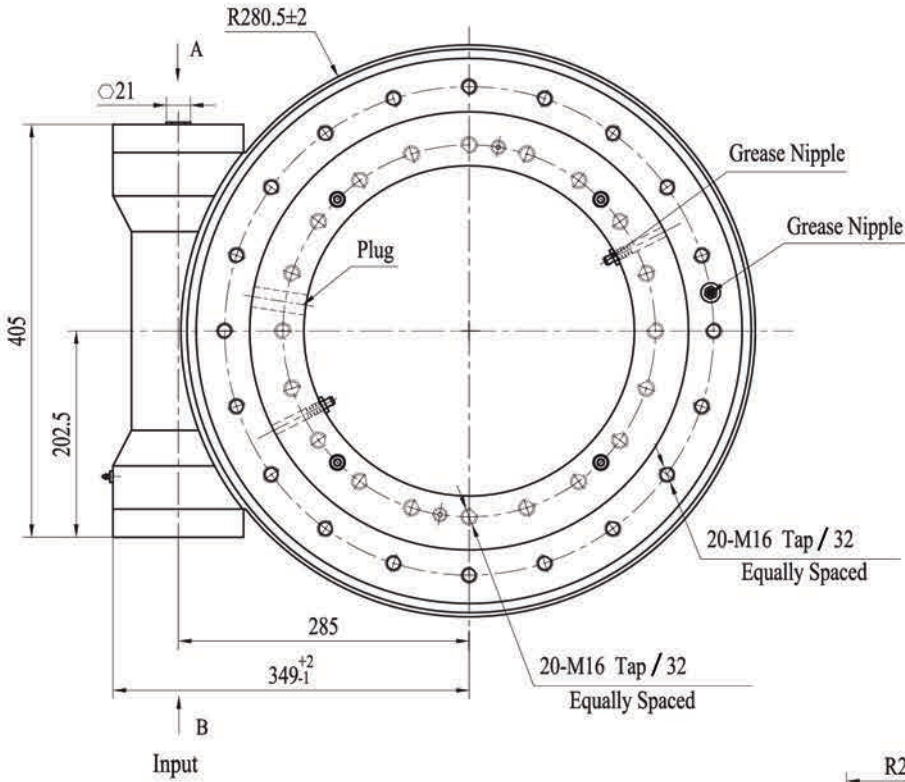
NOTE

- ▲ MAKE SURE YOU STAY BELOW THIS LINE
- ▲ THIS DRAWING IS JUST FOR YOUR REFERENCE
- ▲ THE DRAWING IS SUBJECT TO CHANGE DUE TO NEW DESIGN WITHOUT PRIOR NOTICE

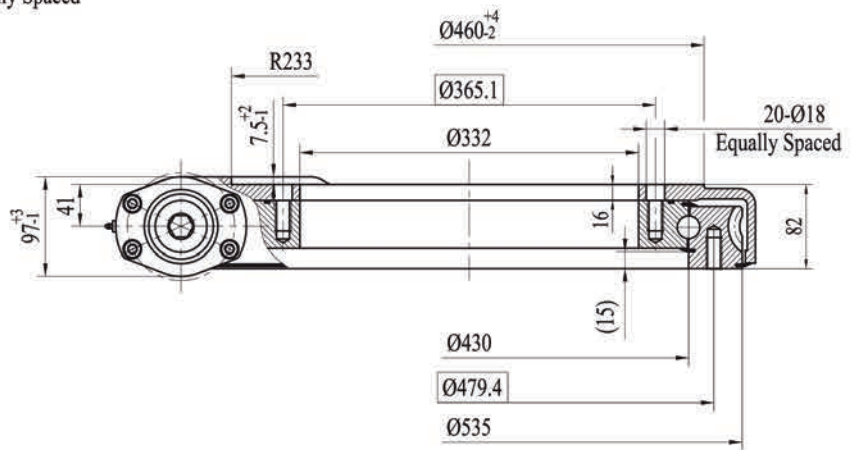
For more information, please contact with us as follows

WE17 - WORM DRIVE

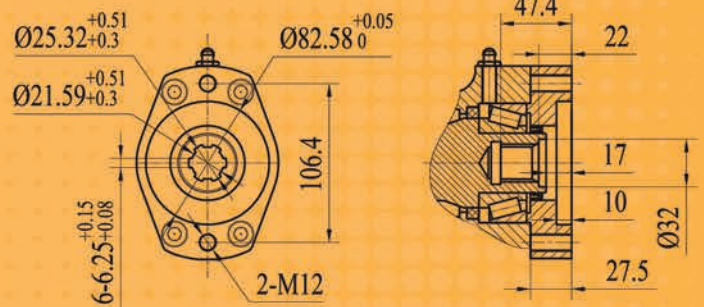
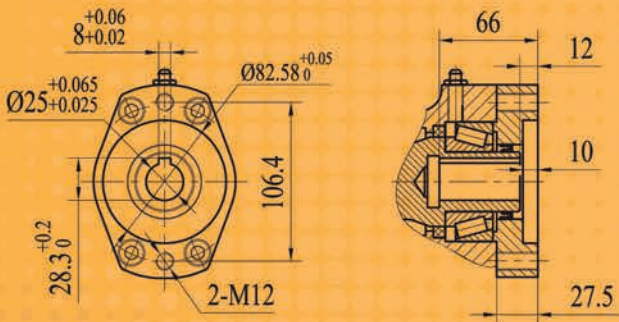
UNITS: mm



90kg



VIEW B OPTION

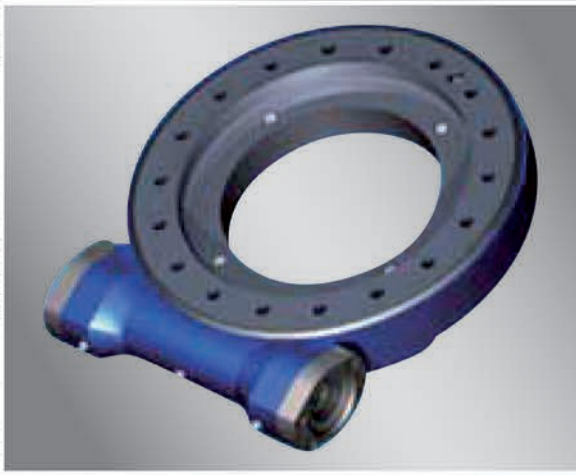


Ø12 Ø14 Ø16 Ø20 Ø25

■ NORMAL

6B SPLINE

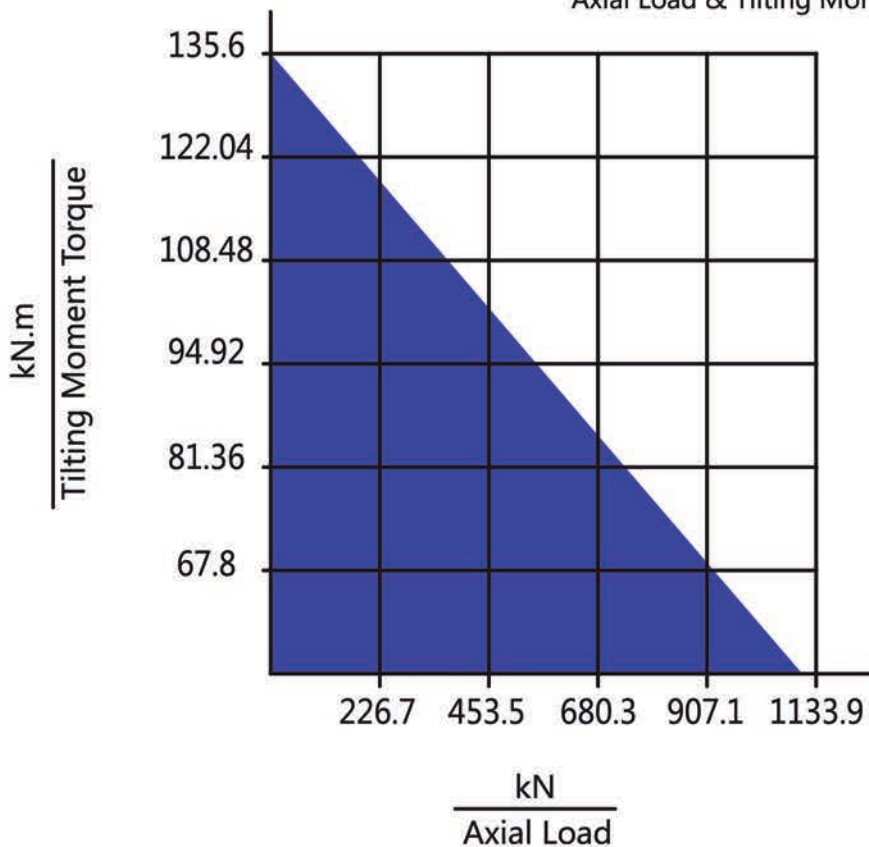
■ NORMAL



WE17 | Worm Drive Performance Parameters

Data Model	Output Torque	Tilting Moment Torque	Holding Torque	Static Axial Rating	Static Radial Rating	Dynamic Axial Rating	Dynamic Radial Rating	Gear Ratio	Tracking Precision	Weight
WE17	12.96 kN.m	135.6 kN.m	72.3 kN.m	1110 kN	414 kN	266 kN	220 kN	104 : 1	≤ 0.1°	90kg

MOMENT LOAD CHART
Axial Load & Tilting Moment



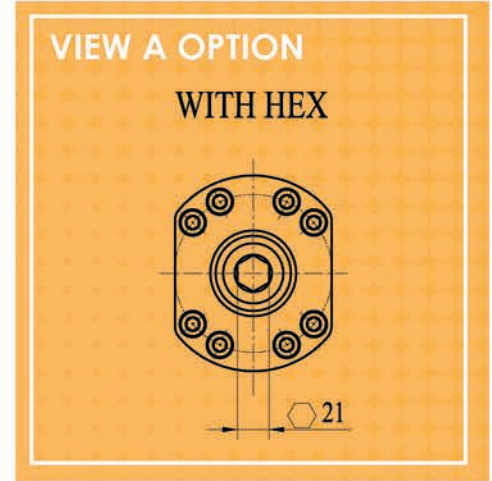
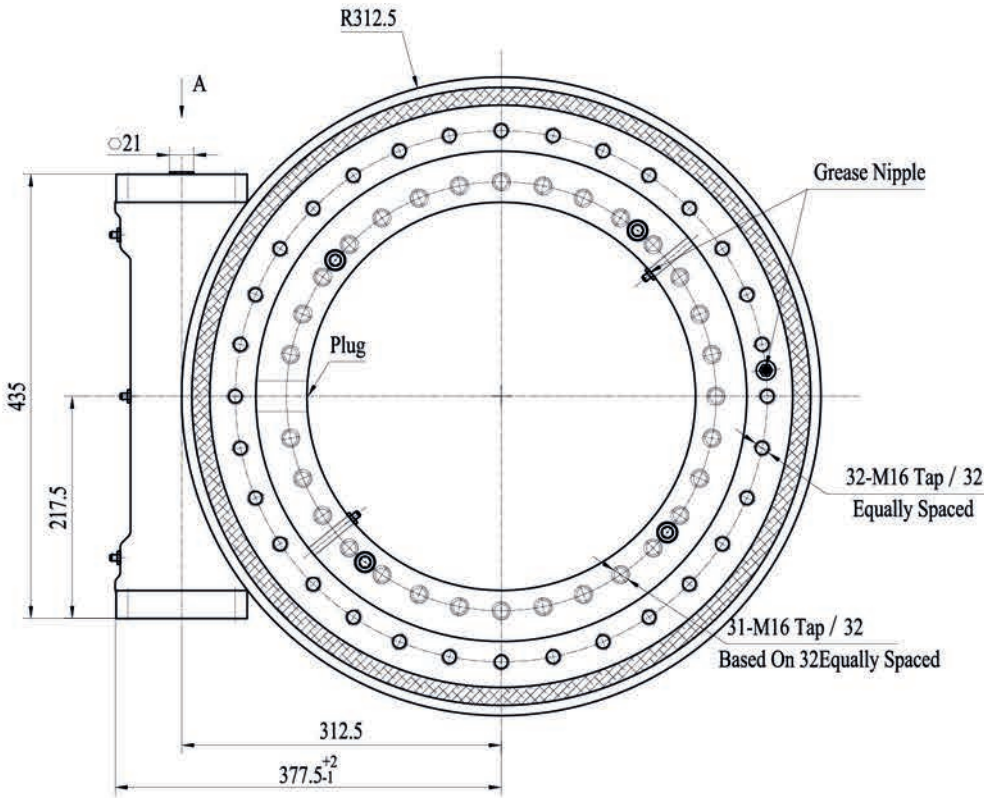
NOTE

- ▲ MAKE SURE YOU STAY BELOW THIS LINE
- ▲ THIS DRAWING IS JUST FOR YOUR REFERENCE
- ▲ THE DRAWING IS SUBJECT TO CHANGE DUE TO NEW DESIGN WITHOUT PRIOR NOTICE

For more information, please contact with us as follows

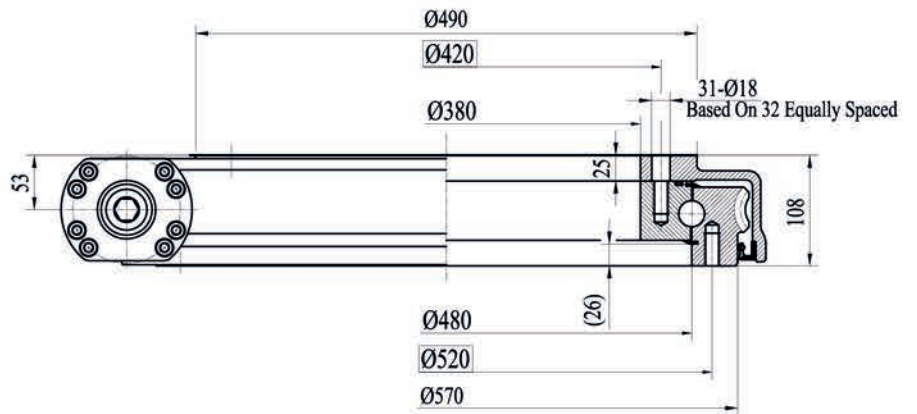
WEA19B - WORM DRIVE

UNITS: mm

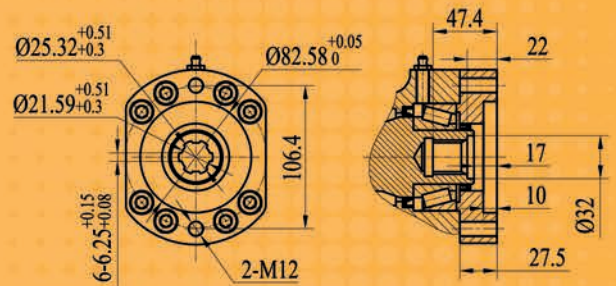
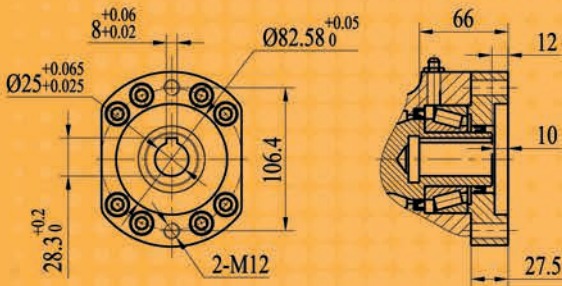


B
Input

 **118 kg**



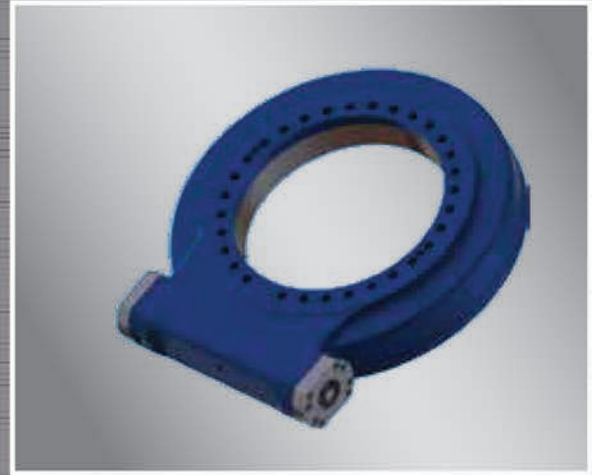
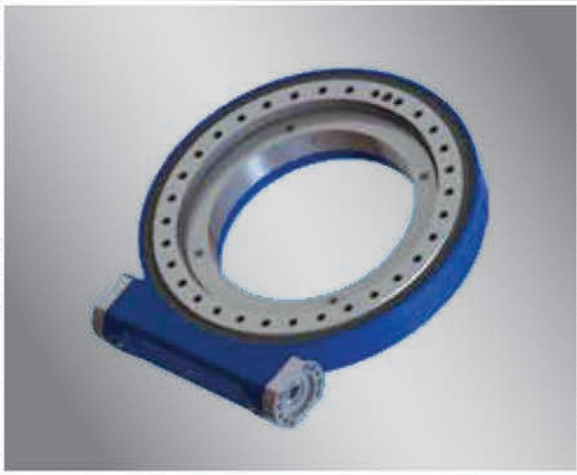
VIEW B OPTION



Ø12 Ø14 Ø16 Ø20 Ø25

6B SPLINE

■ NORMAL

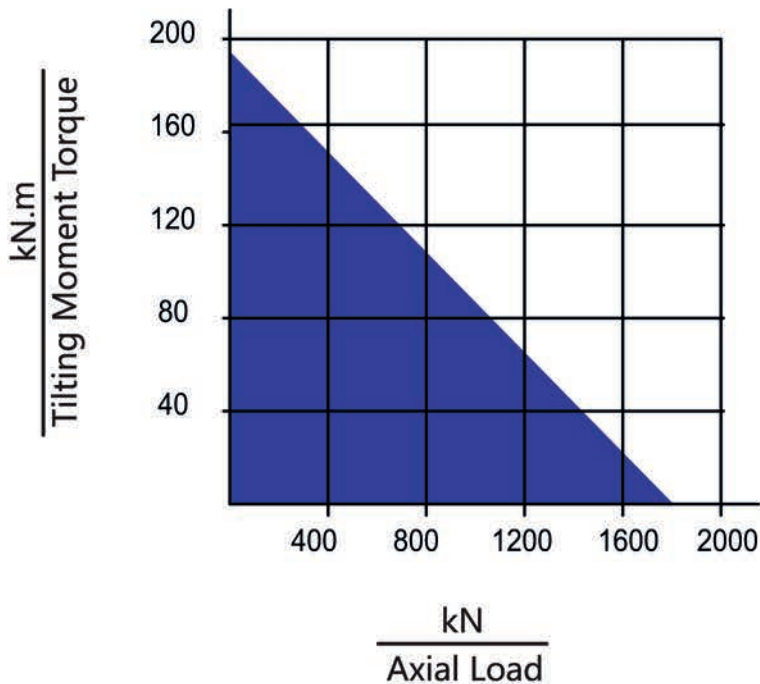


WEA19B | Worm Drive Performance Parameters

Data	Output Torque	Tilting Moment Torque	Holding Torque	Static Axial Rating	Static Radial Rating	Dynamic Axial Rating	Dynamic Radial Rating	Gear Ratio	Tracking Precision	Weight
Model										
WEA19B	18.5 kN.m	196 kN.m	80.1 kN.m	1800 kN	675 kN	290 kN	250 kN	94 : 1	≤ 0.1°	118 kg

MOMENT LOAD CHART

Axial Load & Tilting Moment



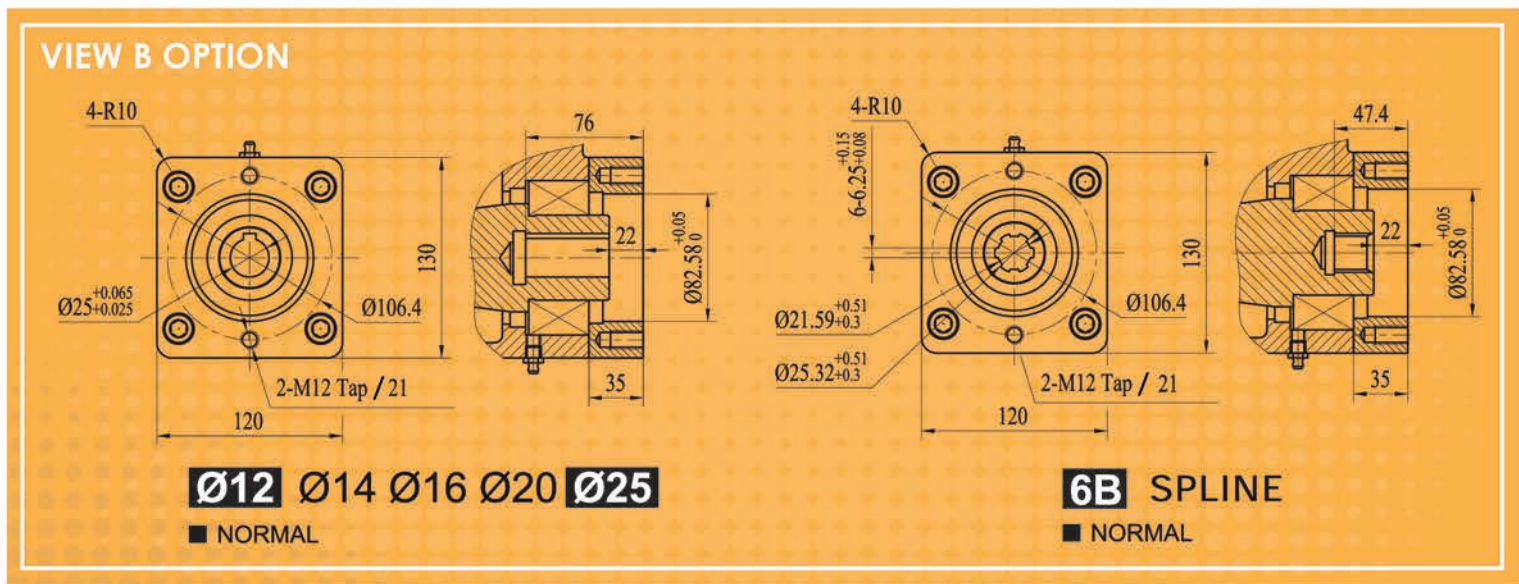
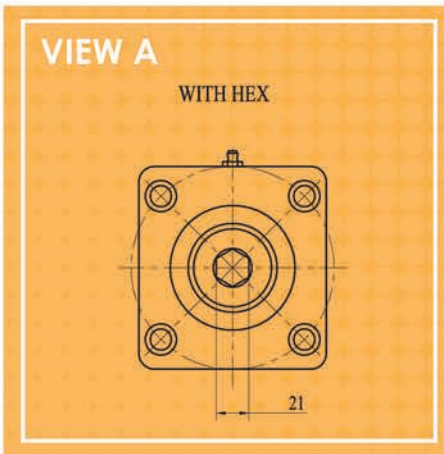
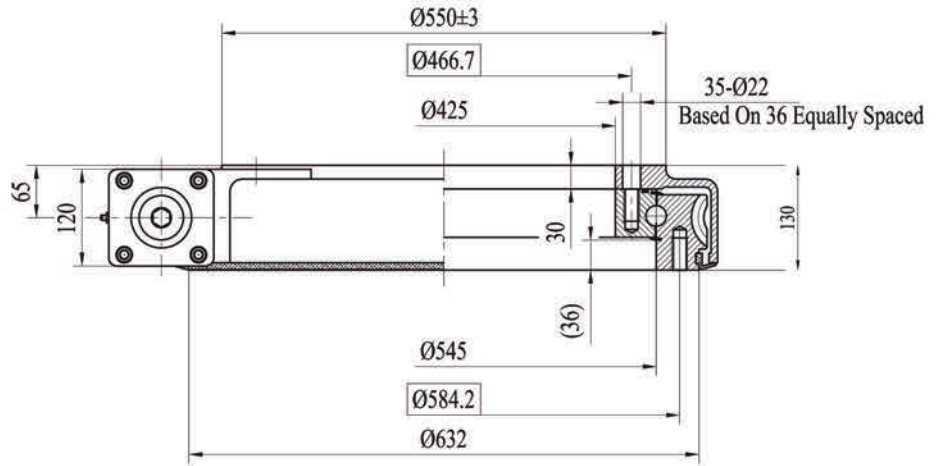
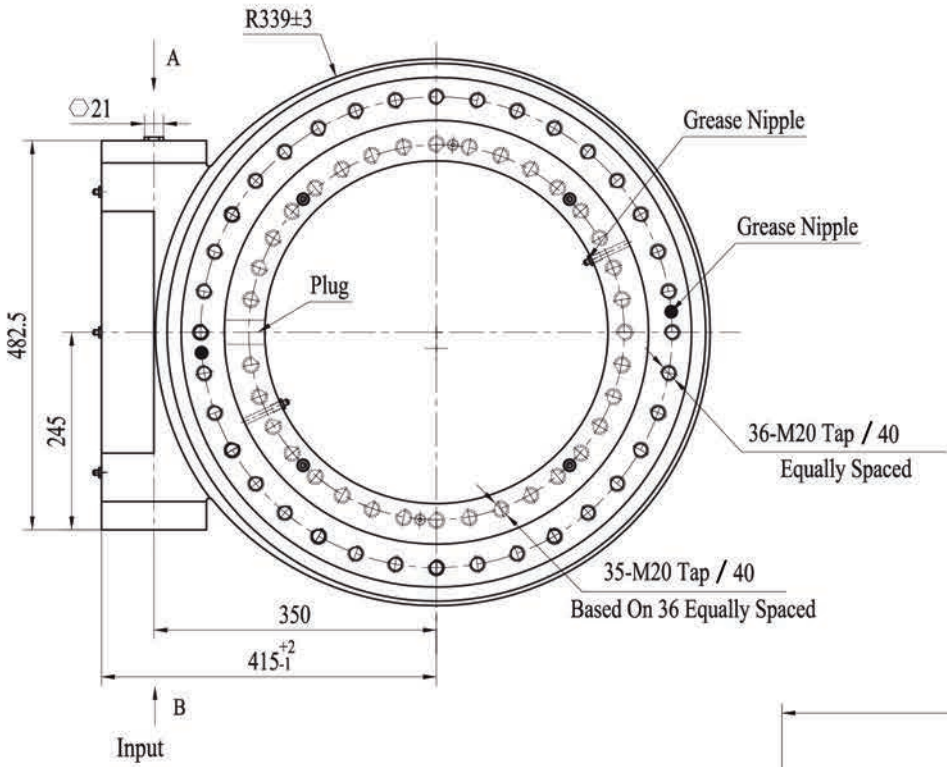
NOTE

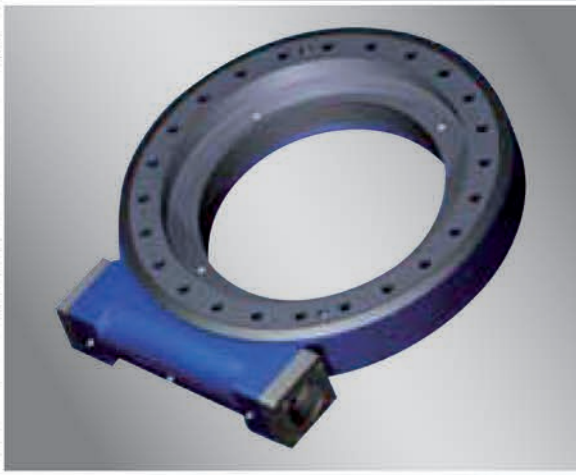
- ▲ PLEASE BE SURE TO REMAIN UNDER THIS CURVE
- ▲ THIS DRAWING IS JUST FOR YOUR REFERENCE
- ▲ THE DRAWING IS SUBJECT TO CHANGE DUE TO NEW DESIGN WITHOUT PRIOR NOTICE

For more information, please contact with us as follows

WE21 - WORM DRIVE

UNITS: mm



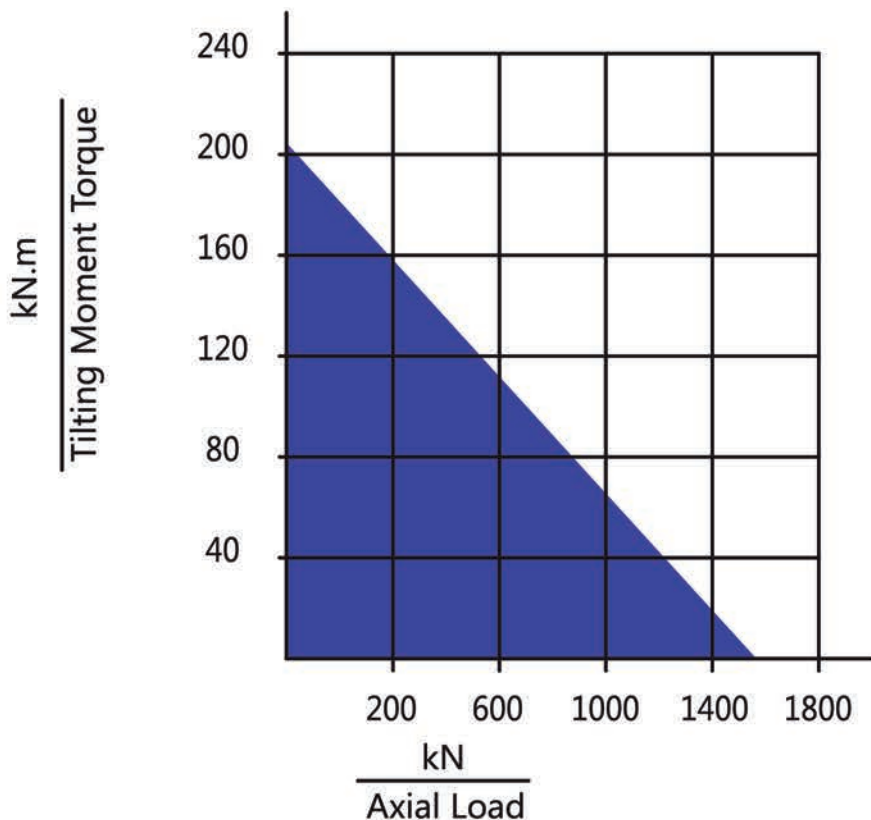


WE21 | Worm Drive Performance Parameters

Model	Data	Output Torque	Tilting Moment Torque	Holding Torque	Static Axial Rating	Static Radial Rating	Dynamic Axial Rating	Dynamic Radial Rating	Gear Ratio	Tracking Precision	Weight
WE21		28.7 kN.m	203 kN.m	105.8 kN.m	1598 kN	596 kN	340 kN	270 kN	90 : 1	$\leq 0.1^\circ$	169kg

MOMENT LOAD CHART

Axial Load & Tilting Moment



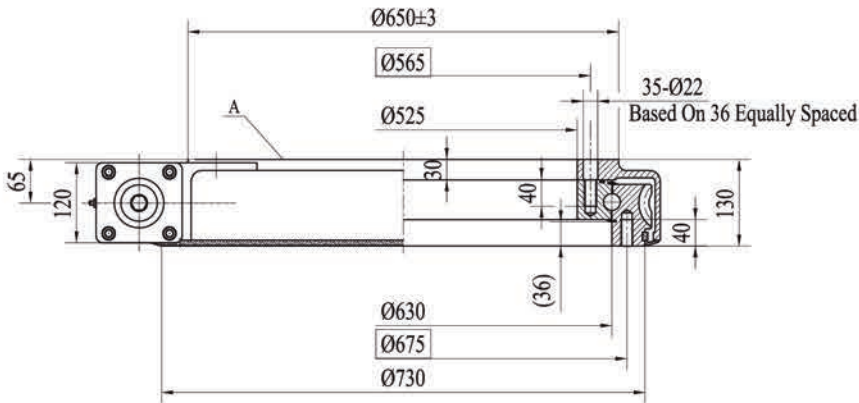
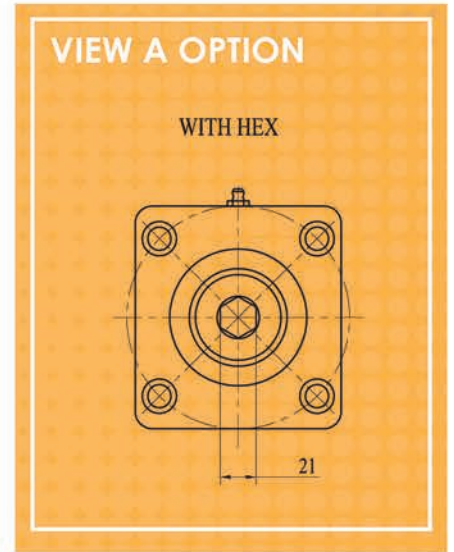
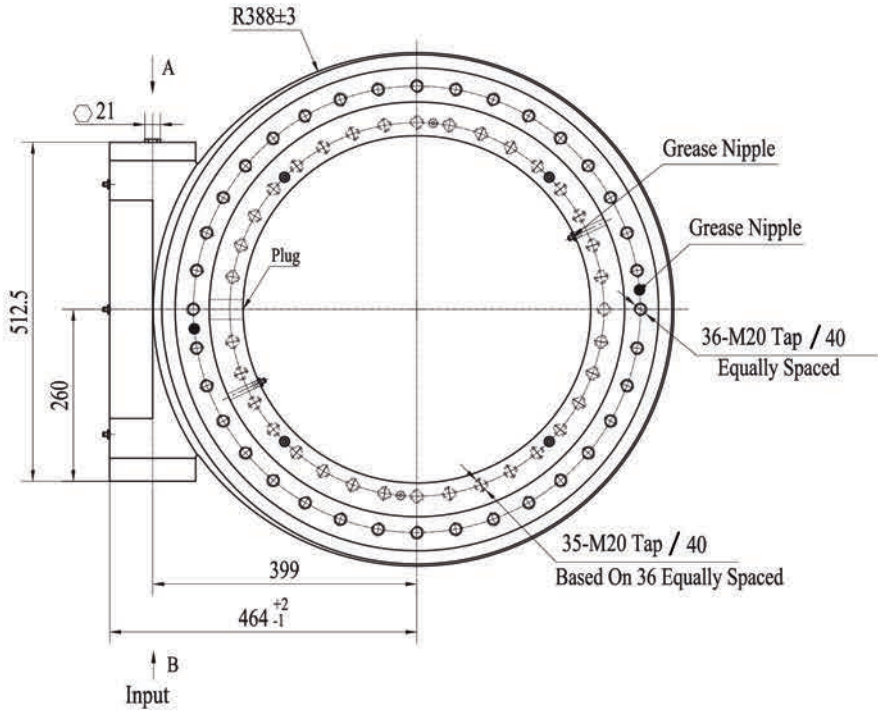
NOTE

- ▲ MAKE SURE YOU STAY BELOW THIS LINE
- ▲ THIS DRAWING IS JUST FOR YOUR REFERENCE
- ▲ THE DRAWING IS SUBJECT TO CHANGE DUE TO NEW DESIGN WITHOUT PRIOR NOTICE

For more information, please contact with us as follows

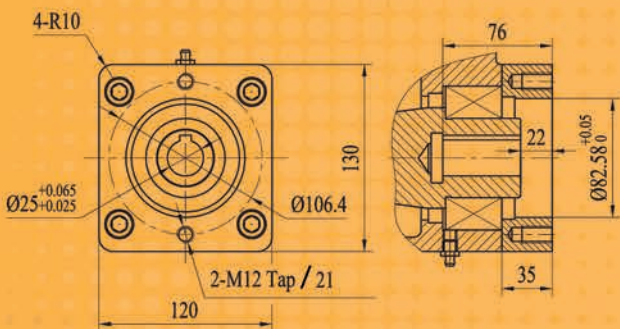
WE25 - WORM DRIVE

UNITS: mm



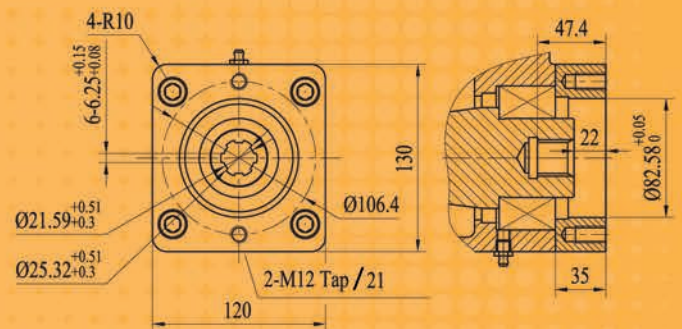
199kg

VIEW B OPTION

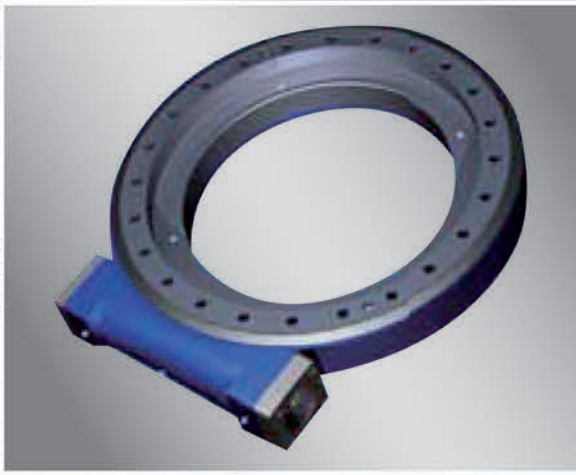


Ø12 Ø14 Ø16 Ø20 Ø25

■ NORMAL



6B SPLINE

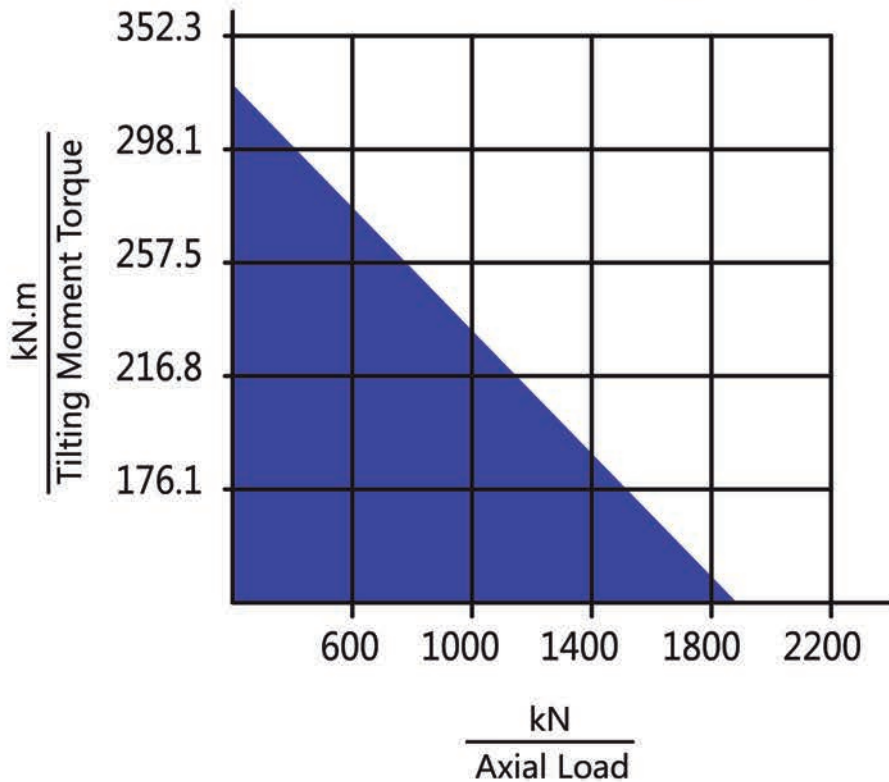


WE25 | Worm Drive Performance Parameters

Model	Data	Output Torque	Tilting Moment Torque	Holding Torque	Static Axial Rating	Static Radial Rating	Dynamic Axial Rating	Dynamic Radial Rating	Gear Ratio	Tracking Precision	Weight
WE25		34.2 kN.m	310 kN.m	158.3 kN.m	1850 kN	690 kN	420 kN	320 kN	104 : 1	$\leq 0.1^\circ$	199kg

MOMENT LOAD CHART

Axial Load & Tilting Moment



NOTE

- ▲ MAKE SURE YOU STAY BELOW THIS LINE
- ▲ THIS DRAWING IS JUST FOR YOUR REFERENCE
- ▲ THE DRAWING IS SUBJECT TO CHANGE DUE TO NEW DESIGN WITHOUT PRIOR NOTICE

For more information, please contact with us as follows

OTHER POSSIBILITIES

No enclosed :



Straight toothed crown drive system :



System double axes of rotation :





13 Rue René Laënnec
F-78310 COIGNIÈRES
T. (+33) 01 30 49 11 20
contact@cetic.fr



43 Boulevard Georges Favon
CH-1204 GENÈVE
T. (+41) 225 192 412
contact@cetic.ch

www.cetic.fr